

Reserved for County Recorder's use.



Doc ID: 010475620001 Type: GEN
Recorded: 06/10/2022 at 11:25:31 AM
Fee Amt: \$7.00 Page 1 of 1
Black Hawk County Iowa
SANDIE L. SMITH RECORDER

File 2022-00023977

Kyle J. Helland, 6109 Chancellor Drive, Cedar Falls, Iowa 50613-6916, (319)-266-0161

UNITED STATES PUBLIC LAND SURVEY CORNER CERTIFICATE
OF

LAND SURVEY MONUMENTS SITUATED IN SECTION NO. 15, TOWNSHIP NO. 90 NORTH, RANGE
NO. 12 WEST OF THE FIFTH PRINCIPAL MERIDIAN, BLACK HAWK COUNTY, IOWA.
PREVIOUSLY RECORDED IN FEE BOOK #2006-7407

(SHOW REASON FOR PREPARING THIS CERTIFICATE, THE EVIDENCE AND DETAILED PROCEDURES USED IN ESTABLISHING THE
CORNER POSITIONS AND MONUMENTATION FOUND OR PLACED.)

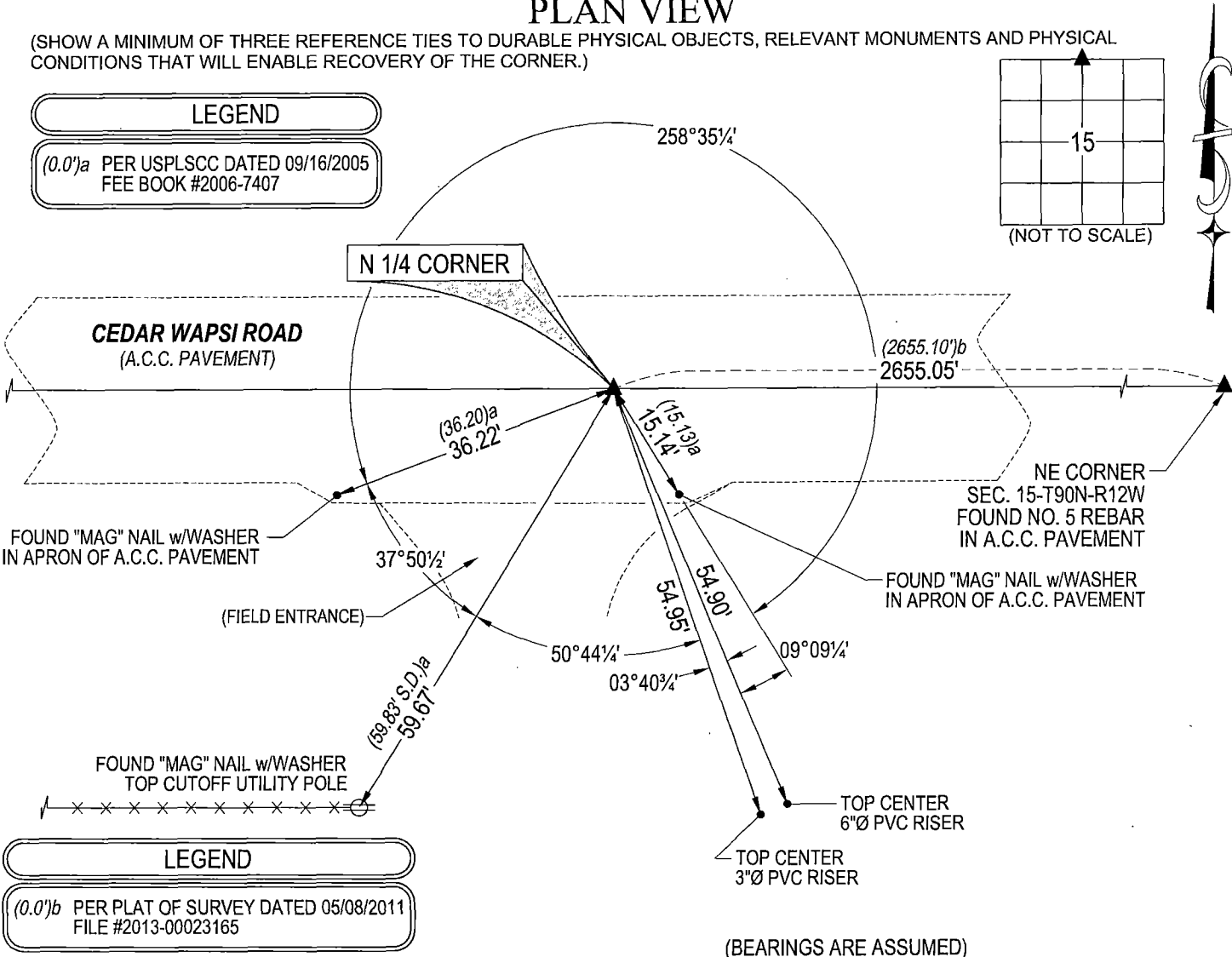
MONUMENT DESCRIPTION AND REMARKS:

ONLY TWO REFERENCE TIES REMAIN. SURVEY COMPLETED IN THE SE 1/4 OF SEC. 10-T90N-R12W.

→ **N 1/4 CORNER:** USPLSCC FEE BOOK #2006-7407 DATED 09/16/2005 CALLS FOR [FOUND 5/8" REBAR PRIOR TO RE-SURF.
EXIST. 3" ACC MILLED, AND PCC PASE REBBELIZED w/ NEW 7" ACC MAT. CORNER TEMP. REFERENCED, AND RESET w/
#5 REBAR LOCATED AT C.L. ACC JOINT. CORNER ANGLE DENOTED PER RTK GPS MEASURE. RECORD TIES PER PLS
#7060 NOT UTILIZED FOR FINAL RECORD, WITH COR. BEING UPDATED FROM EXISTING RECORD, PER PLS #7060 DATED
10-22-1992.]. SEARCHED AREA WITH MAGNETIC DETECTOR AND FOUND NO. 5 REBAR FLUSH WITH A.C.C. PAVEMENT.
UTILIZED SAID FOUND REBAR AS CORNER.

PLAN VIEW

(SHOW A MINIMUM OF THREE REFERENCE TIES TO DURABLE PHYSICAL OBJECTS, RELEVANT MONUMENTS AND PHYSICAL
CONDITIONS THAT WILL ENABLE RECOVERY OF THE CORNER.)



HELLAND ENGINEERING & SURVEYING, LTD.
6109 Chancellor Drive
Cedar Falls, Iowa 50613-6916
(319)-266-0161

BRASS TAG = 4d. NAIL & 13/16"Ø BRASS TAG DRAWN BY: KDA
SHINER = 1"Ø STEEL SHINER w/MASONRY NAIL
OPC = PLASTIC CAP (O=ORANGE, R=RED, Y=YELLOW)
(00') RECORDED AS FILE NAME: 22-163-24.DWG



I hereby certify that this land surveying document was prepared
and the related survey work was performed by me or under my
direct personal supervision and that I am a duly licensed
Professional Land Surveyor under the laws of the State of Iowa.
Kyle J. Helland 06/10/2022
Kyle J. Helland
License Number 23212
My license renewal date is December 31, 2023.
All pages or sheets are covered by this seal except:

LIST CORNERS TO BE INDEXED			
CORNER	SECTION	TOWNSHIP	RANGE
N 1/4 CORNER	15	90N	12W
S 1/4 CORNER	10	90N	12W