

PREPARED BY: BLACK HAWK COUNTY ENGINEERS OFFICE PH.# (319) 833-3008 SLSI 9-94
316 E. FIFTH STREET, ROOM 211 WATERLOO, IOWA 50703 FAX.# (319) 833-3139 CERT 12-96

UNITED STATES PUBLIC LAND SURVEY CORNER CERTIFICATE OF
Land Survey Monuments situated in Section 15, Township 90 N,
Range 12 W, of the Fifth Principal Meridian, BLACK HAWK County, Iowa.
Previously recorded in Misc. Book 304, Page 065, in County Recorder's Office.

(Show reason for preparing this certificate, the evidence and detailed procedures used in establishing the corner positions and monumentation found or placed.)

Monument Description and Remarks: FOUND 5/8" REBAR PRIOR TO RE-SURF.
EXIST. 3" ACC MILLED, AND PCC BASE RUBBELIZED w/ NEW 7" ACC MAT.
CORNER TEMP. REFERENCED, AND RESET w/ #5 REBAR LOCATED AT C.L. ACC
JOINT. CORNER ANGLE DENOTED PER RTK GPS MEASURE.
RECORD TIES PER PLS #7060 NOT UTILIZED FOR FINAL RECORD, WITH COR.
BEING UPDATED FROM EXISTING RECORD, PER PLS #7060 DATED 10-22-1992.

PLAN - VIEW

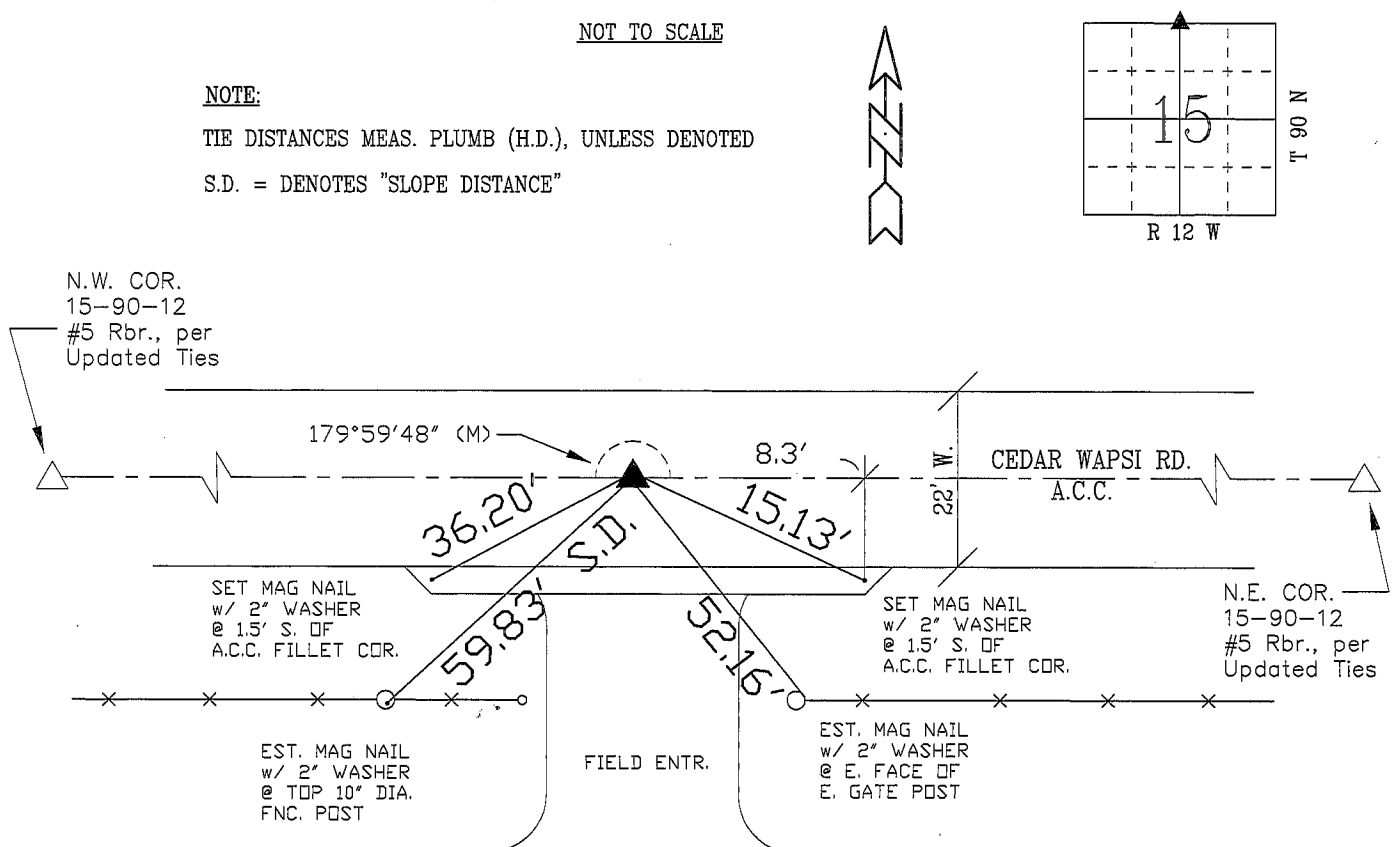
(Show a minimum of three reference ties to durable physical objects, relevant monuments and physical conditions that will enable recovery of the corner.)

NOT TO SCALE

NOTE:

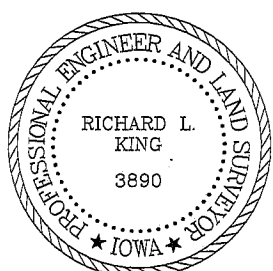
TIE DISTANCES MEAS. PLUMB (H.D.), UNLESS DENOTED

S.D. = DENOTES "SLOPE DISTANCE"



FIELD SURVEY: G.T. & B.K. 08/29/05
PREPARED BY: G. TINKER 09/06/05

CERTIFICATION



I hereby certify that this land surveying document was prepared and the related survey work was performed by me or under my direct personal supervision and that I am a duly licensed Land Surveyor under the laws of the State of Iowa.

Richard L. King 9/6/05
Richard L. King (date)

License Number 3890

My license renewal date is December 31, 2005

Pages or sheets covered by this seal:

This Land Corner Certificate Only.

LIST CORNERS TO BE INDEXED

Corner	Section	Township	Range
N. 1/4	15	90 N	12 W
S. 1/4	10	90 N	12 W