

I RS  
P  
Z

Document Number: 2007001453  
Date: Jul 19, 2006 2:00:09 pm  
Aud Fee: 0.00 Rec Fee: 0.00  
Trans Tax: 0.00 Rec Management Fee: 0.00  
E-Com Fee: 0.00 Non-Standard Page Fee: 0.00  
Filed for record in Black Hawk County, Iowa  
Patricia S. Sass, County Recorder

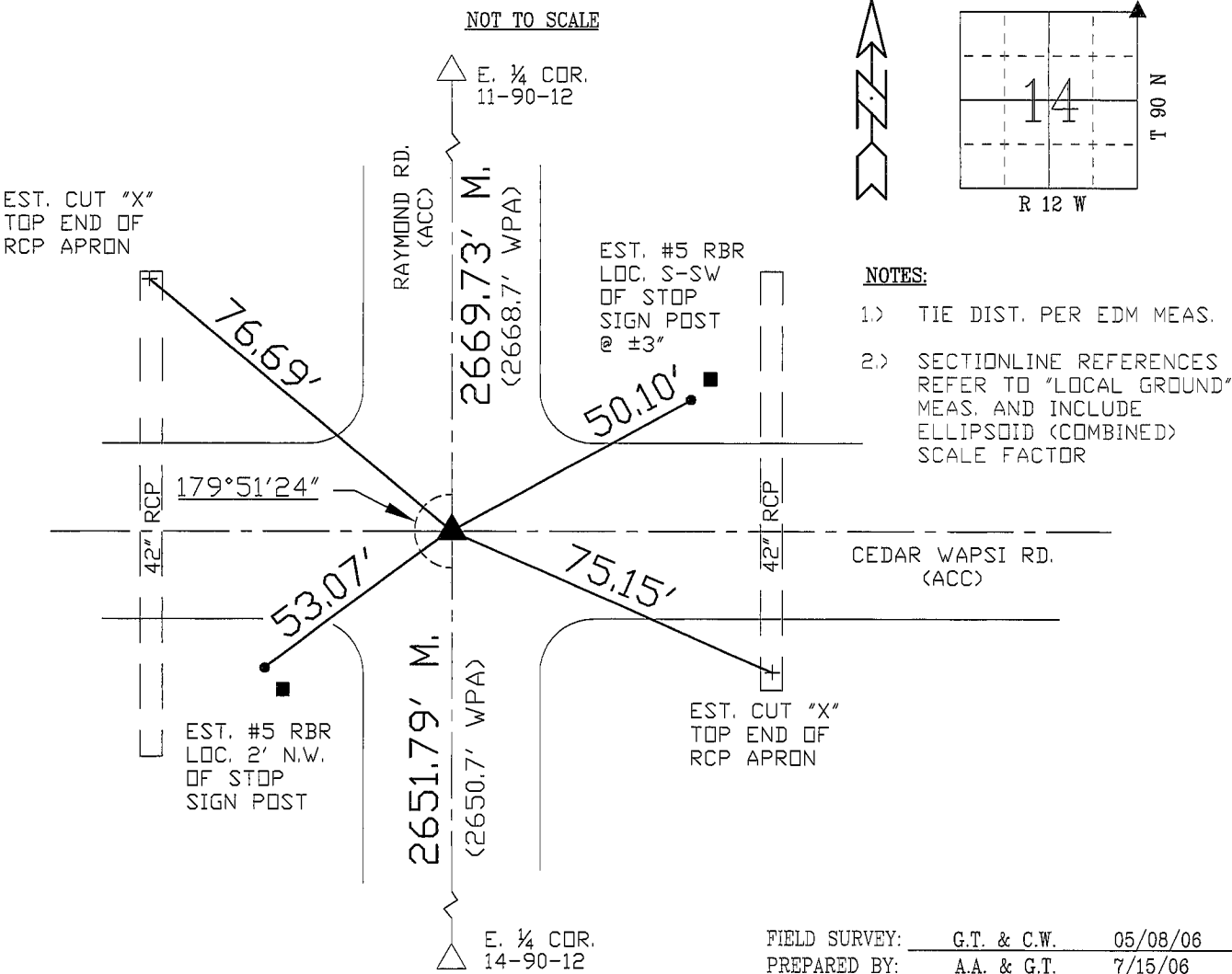
PREPARED BY: BLACK HAWK COUNTY ENGINEERS OFFICE PH.# (319) 833-3008 SLSI 9-94  
316 E. FIFTH STREET, ROOM 211 WATERLOO, IOWA 50703 FAX.# (319) 833-3139 CERT 12-96

UNITED STATES PUBLIC LAND SURVEY CORNER CERTIFICATE OF  
Land Survey Monuments situated in Section 14, Township 90 N, Range 12 W, of the Fifth Principal Meridian, BLACK HAWK County, Iowa. Previously recorded in Misc. Book n/a, Page n/a, in County Recorder's Office.  
(Show reason for preparing this certificate, the evidence and detailed procedures used in establishing the corner positions and monumentation found or placed.)

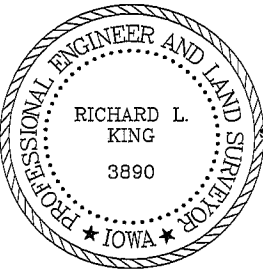
Monument Description and Remarks: FND. 3/8" STEEL PIN @ C.L. INT. w/ CEDAR WAPSI RD. PRIOR TO RESURF. PROJECT. PLAN 4 1/2"-5" HMA RESURF. PROPOSED.  
GEOM. DEFL. AND SECTION LINE REFERENCES PER RTK GPS MEAS., 1999/2000  
MAPPING PROJECT. RE-SET WITH 5IN. L. #5 REBAR LOCATED ± C.L. INTERSECTION WITH CEDAR WAPSI RD.

PLAN - VIEW

(Show a minimum of three reference ties to durable physical objects, relevant monuments and physical conditions that will enable recovery of the corner.)



CERTIFICATION



I hereby certify that this land surveying document was prepared and the related survey work was performed by me or under my direct personal supervision and that I am a duly licensed Land Surveyor under the laws of the State of Iowa.  
Richard L. King  
License Number 3890  
My license renewal date is December 31, 2007  
Pages or sheets covered by this seal:  
This Land Corner Certificate Only.

LIST CORNERS TO BE INDEXED

Corner	Section	Township	Range
N.E. COR	14	90 N	12 W
S.E. COR.	11	90 N	12 W
N.W. COR	13	90 N	12 W
S.W. COR	12	90 N	12 W