

IRS
Pgm
Z

Document Number: 2007001454
Date: Jul 19, 2006 2:15:53 pm
Aud Fee: 0.00 Rec Fee: 0.00
Trans Tax: 0.00 Rec Management Fee: 0.00
E-Com Fee: 0.00 Non-Standard Page Fee: 0.00
Filed for record in Black Hawk County, Iowa
Patricia S. Sass, County Recorder

PREPARED BY: BLACK HAWK COUNTY ENGINEERS OFFICE PH.# (319) 833-3008 SLSI 9-94
316 E. FIFTH STREET, ROOM 211 WATERLOO, IOWA 50703 FAX# (319) 833-3139 CERT 12-96

UNITED STATES PUBLIC LAND SURVEY CORNER CERTIFICATE OF
Land Survey Monuments situated in Section 14, Township 90 N, Range 12 W, of the Fifth Principal Meridian, BLACK HAWK County, Iowa. Previously recorded in Misc. Book 329, Page 947, in County Recorder's Office.

(Show reason for preparing this certificate, the evidence and detailed procedures used in establishing the corner positions and monumentation found or placed.)

Monument Description and Remarks: FND. #5 RBR. PRIOR TO RESURF. PROJECT, AND TIED AS SHOWN, WITH PLAN 4 1/2"-5" HMA RESURF. PROPOSED.
GEOM. DEFL. AND SECTION LINE REFERENCES PER RTK GPS MEAS., 1999/2000
MAPPING PROJECT. RE-SET WITH 5IN. L. #5 REBAR LOCATED ±0.80' EAST OF C.L. ACC JOINT.

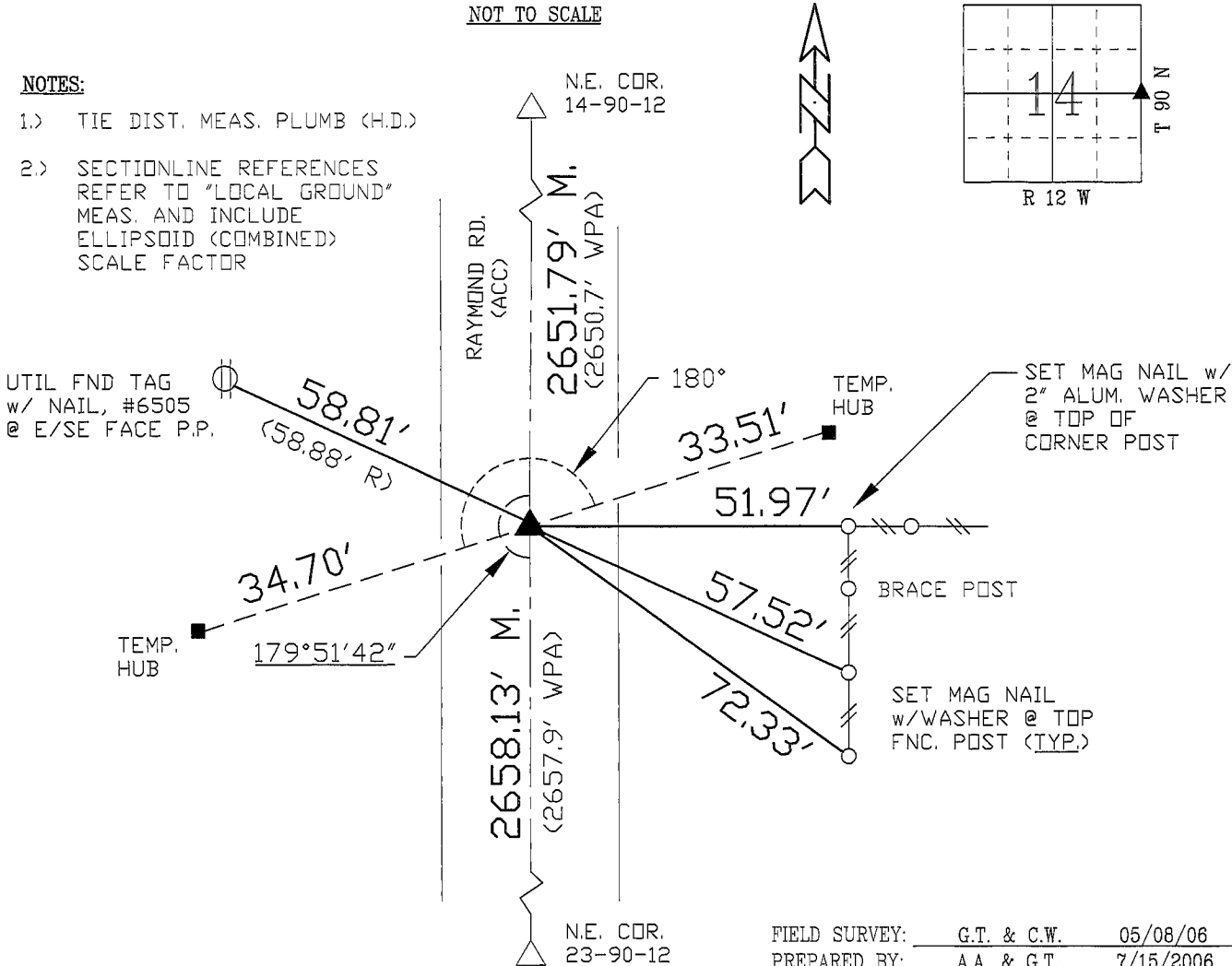
PLAN - VIEW

(Show a minimum of three reference ties to durable physical objects, relevant monuments and physical conditions that will enable recovery of the corner.)

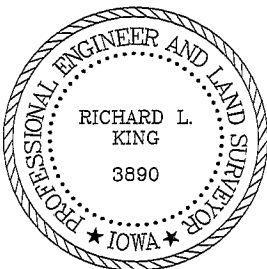
NOT TO SCALE

NOTES:

- 1.) TIE DIST. MEAS. PLUMB (H.D.)
- 2.) SECTIONLINE REFERENCES REFER TO "LOCAL GROUND" MEAS. AND INCLUDE ELLIPSOID (COMBINED) SCALE FACTOR



CERTIFICATION



I hereby certify that this land surveying document was prepared and the related survey work was performed by me or under my direct personal supervision and that I am a duly licensed Land Surveyor under the laws of the State of Iowa.
Richard L. King 7/17/06 (date)
License Number 3890
My license renewal date is December 31, 2007
Pages or sheets covered by this seal:
This Land Corner Certificate Only.

LIST CORNERS TO BE INDEXED

Corner	Section	Township	Range
E. 1/4	14	90 N	12 W
W. 1/4	13	90 N	12 W