

PREPARED BY: BLACK HAWK COUNTY ENGINEERS OFFICE
316 E. FIFTH STREET, ROOM 211 WATERLOO, IOWA 50703

PH.# (319) 833-3008
FAX.# (319) 833-3139

SLSI 9-94
BHCO 03-09

UNITED STATES PUBLIC LAND SURVEY CORNER CERTIFICATE OF
Land Survey Monuments situated in Section 13, Township 90 N,
Range 12 W, of the Fifth Principal Meridian, BLACK HAWK County, Iowa.
Previously recorded in File 2008, Page 12199, in County Recorder's Office.

(Show reason for preparing this certificate): The corner monument has been Replaced or Modified, per Ia. Code 355.11(1)(c)

(Evidence and detailed procedures used in establishing the corner position(s) and monumentation found or placed.)

Monument Description and Remarks: W. 1/16th COR., NORTH:
CORNER RESET & TIES UPDATED FOR H.M.A. RESURF. PROJECT LFM-1307--7X-07. PRIOR TO
RESURF. PROJECT, FOUND "COTTON GIN SPIKE" PER FILE 2008-12199 AND TEMP. REF. COR.
LOC. PER RTK GPS. AFTER 2" DP. MILL, NO SOUNDING REMAINED @ ± RTK REFERENCE
LOCATION, w/ NO FURTHER EXCAVATION. PVMNT. RESURFACED w/ +3.5" (2" INT. & 1.5"
SURF.) H.M.A. PAVING. AFTER H.M.A. RESURFACE, RESET CORNER WITH 6" L. MAG SPIKE w/
MTL. WASHER (PLS #15748) LOCATED @ ±0.07' NORTH OF H.M.A. JOINT AND ALIGNED WITH
EXISTING FENCELINE TO NORTH.

Project Point #:1005

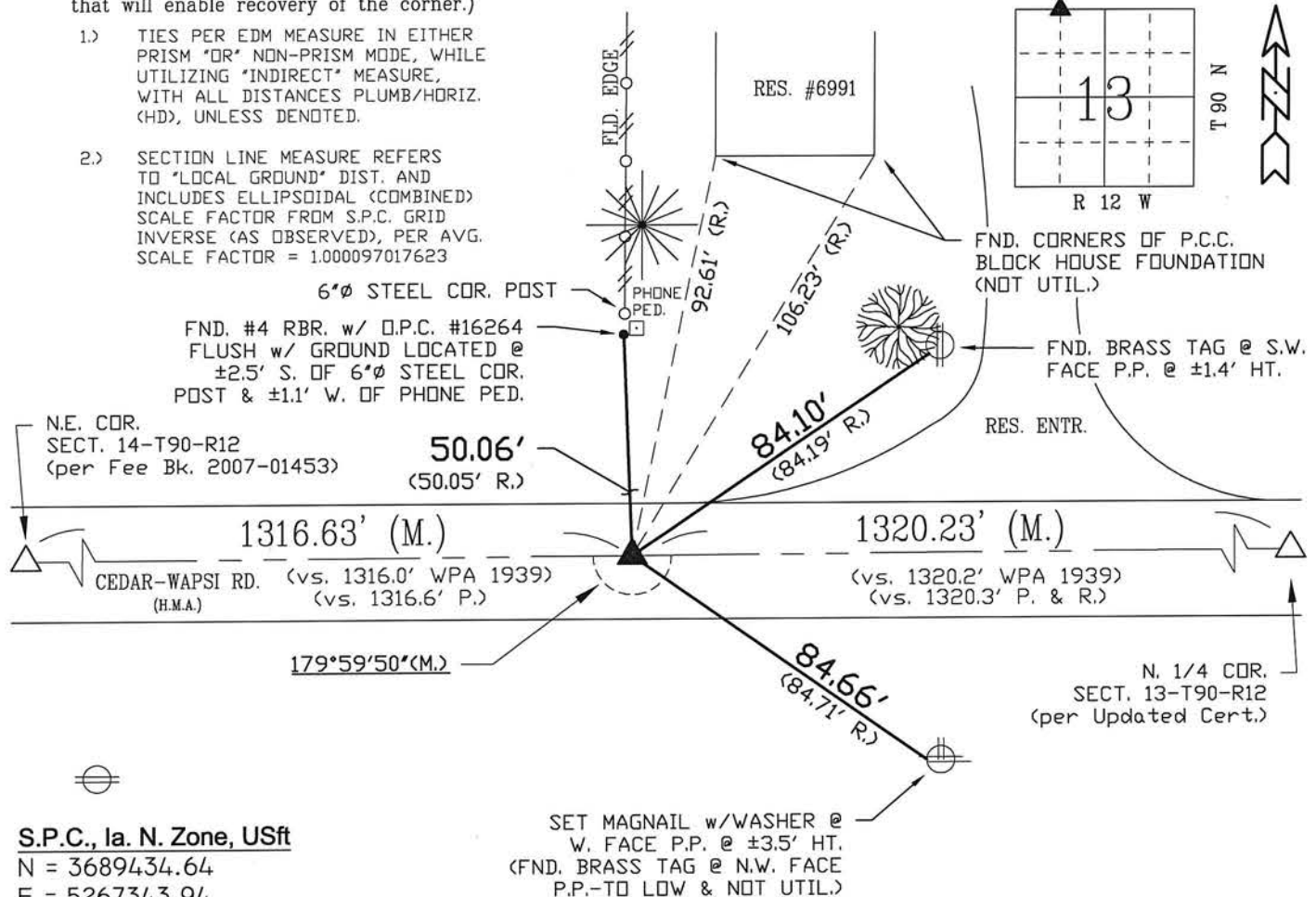
PLAN VIEW

BHco Hist. Ties: N/A

FIELD BOOK: Ties per Topcon 7003i #Z0115

(Show a minimum of three reference ties to durable physical objects, relevant monuments and physical conditions that will enable recovery of the corner.)

- 1.) TIES PER EDM MEASURE IN EITHER PRISM "OR" NON-PRISM MODE, WHILE UTILIZING "INDIRECT" MEASURE, WITH ALL DISTANCES PLUMB/HORIZ. (HD), UNLESS DENOTED.
- 2.) SECTION LINE MEASURE REFERS TO "LOCAL GROUND" DIST. AND INCLUDES ELLIPSOIDAL (COMBINED) SCALE FACTOR FROM S.P.C. GRID INVERSE (AS OBSERVED), PER AVG. SCALE FACTOR = 1.000097017623

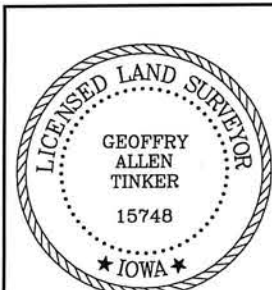


S.P.C., Ia. N. Zone, USft
N = 3689434.64
E = 5267343.94
CONVERGENCE = 0° 52' 17"
(NAD83-NA2011 IARTN OBS.)

FIELD SURVEY: S.S. & G.T. 06/20/14

PREPARED BY: S.S. 10/13/14

CERTIFICATION



I hereby certify that this land surveying document was prepared and the related survey work was performed by me or under my direct personal supervision and that I am a duly licensed Land Surveyor under the laws of the State of Iowa.

Geoffrey Allen Tinker 10/22/2014
Geoffrey Allen Tinker (date)

License Number 15748

My license renewal date is December 31, 2014

Pages or sheets covered by this seal:

This Land Corner Certificate Only.

LIST CORNERS TO BE INDEXED

Corner	Section -	Township -	Range
N.E. Cor.	13	90 N	12 W
NW1/4-NW1/4			
S.E. Cor.	12	90 N	12 W
SW1/4-SW1/4			

INDEX OF ABBREVIATIONS

(M) = "Measured" Dimension	"NP" = Reflectorless EDM Meas.
(P) = "Platted" Dimension	"MLM" = Indirect Measure
(R) = "Record" Dimension	"CM" = Concrete Monument
(C) = "Calculated" Dimension	"SM" = Survey Marker Spike/Tag
"IGS" = Iowa Geodetic Survey	"PK" = PK/MAG Nail Brand Style
"WPA" = Works Progress Admin. Survey	
"G" = per George Miller Survey (BHco Surveyor 1858-1860)	
"B" = per John Ball Survey (BHco Surveyor 1866-1891)	
"N" = per Nathan Barber Survey (BHco Surveyor 1908-1931)	