



Doc ID: 003929700001 Type: GEN
Kind: CORNER
Recorded: 10/08/2009 at 03:50:45 PM
Fee Amt: \$9.00 Page 1 of 1
Instr# 200900010809
Black Hawk County Iowa
JUDITH A MCCARTHY RECORDER
Book 1080 Page 87678 - 87678

File 2010-00007421

Jeffrey P. Helland, 1107 Technology Parkway, Cedar Falls, Iowa 50613-6951, (319)-266-0161

UNITED STATES PUBLIC LAND SURVEY CORNER CERTIFICATE OF

LAND SURVEY MONUMENTS SITUATED IN SECTION NO. 13, TOWNSHIP NO. 90 NORTH, RANGE NO. 12 WEST OF THE FIFTH PRINCIPAL MERIDIAN, BLACK HAWK COUNTY, IOWA.
PREVIOUSLY RECORDED IN N/A

(SHOW REASON FOR PREPARING THIS CERTIFICATE, THE EVIDENCE AND DETAILED PROCEDURES USED IN ESTABLISHING THE CORNER POSITIONS AND MONUMENTATION FOUND OR PLACED.)

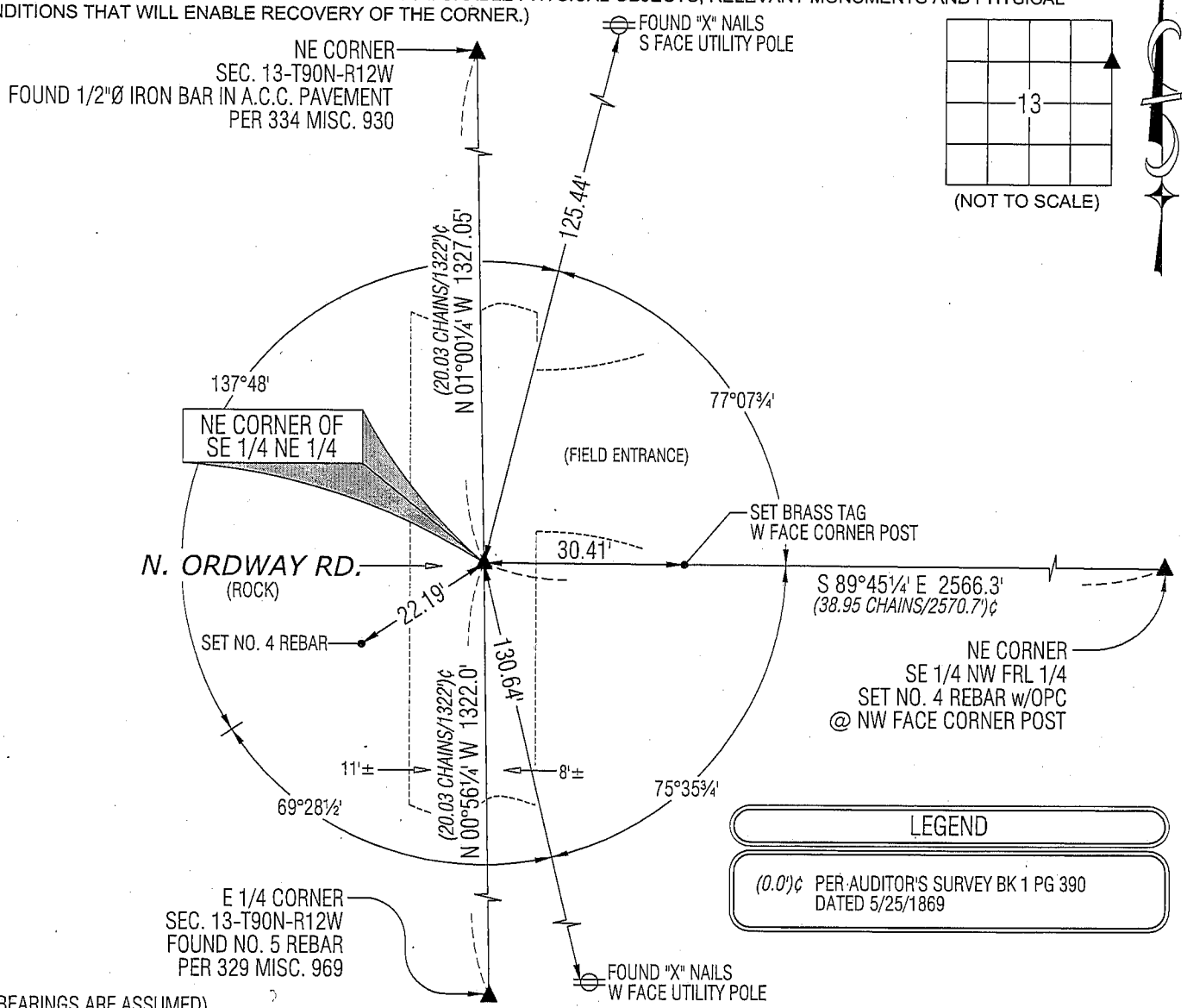
MONUMENT DESCRIPTION AND REMARKS:

NO USPLSCC ON FILE. SURVEY COMPLETED IN THE SW FRL 1/4 NW FRL 1/4 OF SEC. 18-T90N-R11W.

→ **NE CORNER SE 1/4 NE 1/4:** NO BLACK HAWK COUNTY ENGINEER'S REFERENCE TIES AVAILABLE. AUDITOR'S SURVEYOR'S RECORD BOOK 1 PAGE 390 DATED 5/25/1869 CALLS FOR [STONE]. W.P.A. NOTES DATED 8/15/1939 CALLS FOR [1/4 1/4 FC. TO E]. EXCAVATED AND PROBED 6'0"± AREA, FOUND MULTIPLE GRANITE STONES. UPON FURTHER EXCAVATION, FOUND 0.5'±N-Sx0.5'±E-W (TOP VIEW) PINK GRANITE STONE w/DEFINED HIGH POINT (3.2' DEEP). SET NO. 4 REBAR w/OPC #16264 OVER SAID HIGH POINT (0.2' DEEP). UTILIZED STONE BECAUSE IT CORRESPONDS TO DISTANCE FROM SOUTH PER AUDITOR'S SURVEY BOOK 1 PAGE 390 & ALSO CORRESPONDS TO LONE CORNER POST TO THE EAST.

PLAN VIEW

(SHOW A MINIMUM OF THREE REFERENCE TIES TO DURABLE PHYSICAL OBJECTS, RELEVANT MONUMENTS AND PHYSICAL CONDITIONS THAT WILL ENABLE RECOVERY OF THE CORNER.)



LEGEND

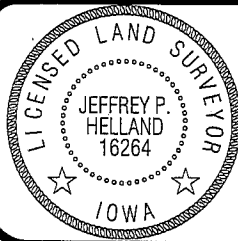
(0.0')c PER AUDITOR'S SURVEY BK 1 PG 390 DATED 5/25/1869

(BEARINGS ARE ASSUMED)



HELLAND ENGINEERING & SURVEYING, LTD.
1107 Technology Parkway
Cedar Falls, Iowa 50613-6951
(319)-266-0161

SHINER = 8D NAIL & 1 5/16"Ø METAL SHINER
BRASS TAG = 13/16"Ø BRASS TAG
OPC = PLASTIC CAP (O=ORANGE, R=RED, Y=YELLOW)
(00') RECORDED AS FILE NAME: 09-241C1.DWG



I hereby certify that this land surveying document was prepared and the related survey work was performed by me or under my direct personal supervision and that I am a duly licensed Land Surveyor under the laws of the State of Iowa.
Jeffrey P. Helland 10/7/09
Jeffrey P. Helland
License Number 16264
My license renewal date is December 31, 2009.
All pages or sheets are covered by this seal except:

LIST CORNERS TO BE INDEXED

CORNER	SECTION	TOWNSHIP	RANGE
NE COR. SE 1/4 NE 1/4	13	90N	12W
SE COR. NE 1/4 NE 1/4	13	90N	12W
SW COR. NW 1/4 NW 1/4	18	90N	11W
NW COR. SW 1/4 NW 1/4	18	90N	11W

Res.