

100-443887-100

SLSI 9-94
CERT 12-96

UNITED STATES PUBLIC LAND SURVEY CORNER CERTIFICATE OF

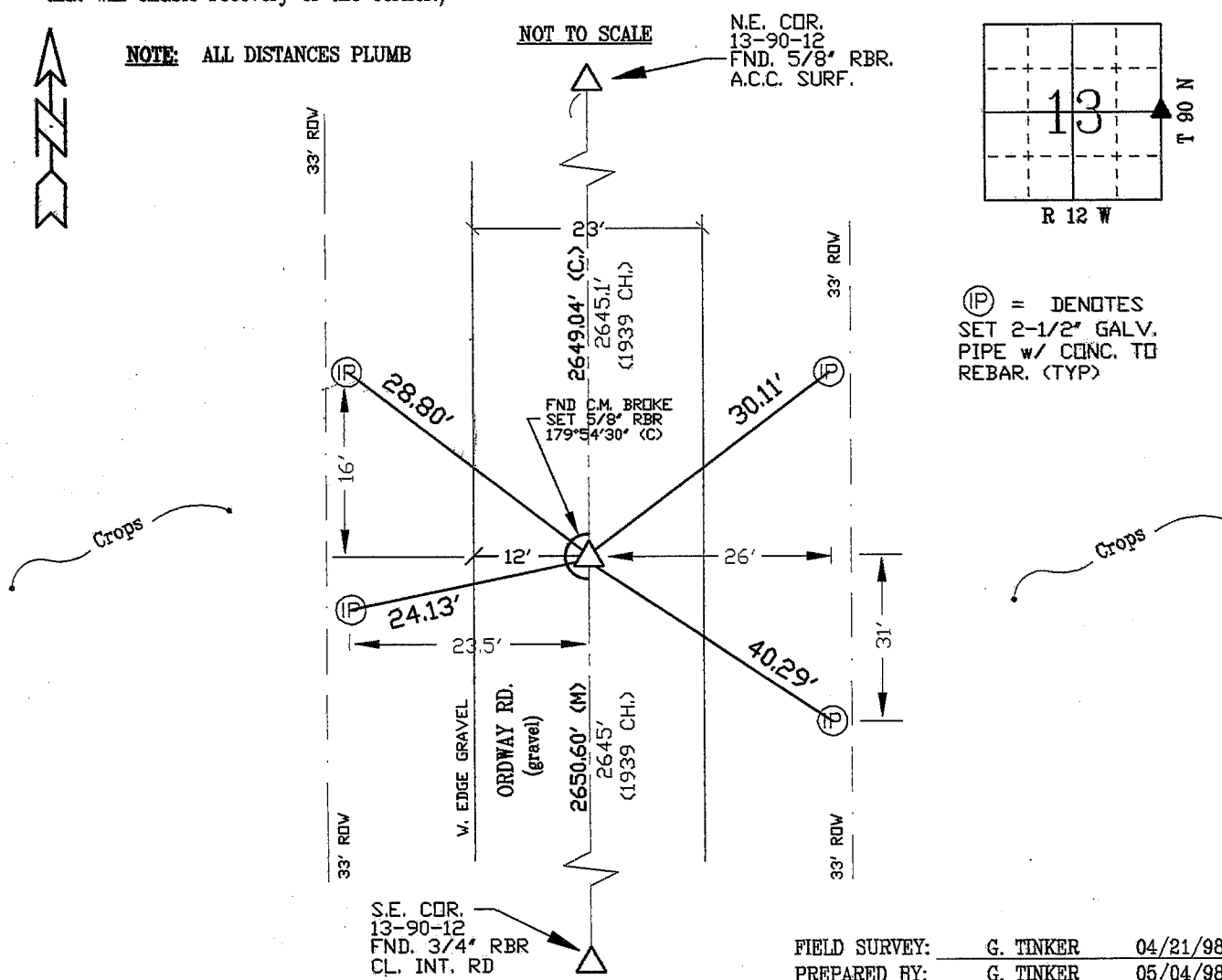
Land Survey Monuments situated in Section 13, Township 90 N, Range 12 W, of the Fifth Principal Meridian, BLACK HAWK County, Iowa. Previously recorded in Misc. Book N/A, Page N/A, in County Recorder's Office.

(Show reason for preparing this certificate, the evidence and detailed procedures used in establishing the corner positions and monumentation found or placed.)

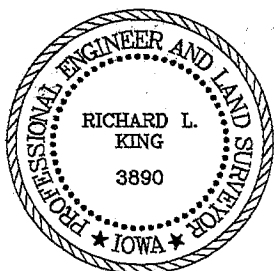
Monument Description and Remarks: FOUND CONC. MONUMENT WITH TOP OFF
LOC. 14' DEEP AND 0.40' SQ. - DRILLED PILOT @ CENTER AND SET 5/8" RBR.
THROUGH CENTER OF CONCRETE MONUMENT. REBAR LOCATED 3' DEEP.
MONUMENT RECOVERED SINCE ALL EXIST. CO. TIES OF RECORD DESTROYED
WITH NO FENCE TO E. or W. (FENCE IS EVIDENT ON THE HORIZONS TO E.
AND TO W. - FOUND MON. PER RATIO OF MEAS. ALONG EAST LINE.

PLAN - VIEW

(Show a minimum of three reference ties to durable physical objects, relevant monuments and physical conditions that will enable recovery of the corner.)



CERTIFICATION



I hereby certify that this land surveying document was prepared and the related survey work was performed by me or under my direct personal supervision and that I am a duly licensed Land Surveyor under the laws of the State of Iowa.

Richard L. King 5/4/98 (date)

License Number 3890
My license renewal date is December 31, 1999

Pages or sheets covered by this seal:

This Land Corner Certificate Only:

LIST CORNERS TO BE INDEXED

Corner Section - Township - Range
E. 1/4 13 90 N 12 W