

Jeffrey P. Helland, 1107 Technology Parkway, Cedar Falls, Iowa 50613-6951, (319)-266-0161

UNITED STATES PUBLIC LAND SURVEY CORNER CERTIFICATE
OFLAND SURVEY MONUMENTS SITUATED IN SECTION NO. 12, TOWNSHIP NO. 90 NORTH, RANGE
NO. 12 WEST OF THE FIFTH PRINCIPAL MERIDIAN, BLACK HAWK COUNTY, IOWA.
PREVIOUSLY RECORDED IN N/A(SHOW REASON FOR PREPARING THIS CERTIFICATE, THE EVIDENCE AND DETAILED PROCEDURES USED IN ESTABLISHING THE
CORNER POSITIONS AND MONUMENTATION FOUND OR PLACED.)

MONUMENT DESCRIPTION AND REMARKS:

NO USPLSCC ON FILE. SURVEY COMPLETED IN THE SE 1/4 AND SW 1/4 OF SEC. 12-T90N-R12W.

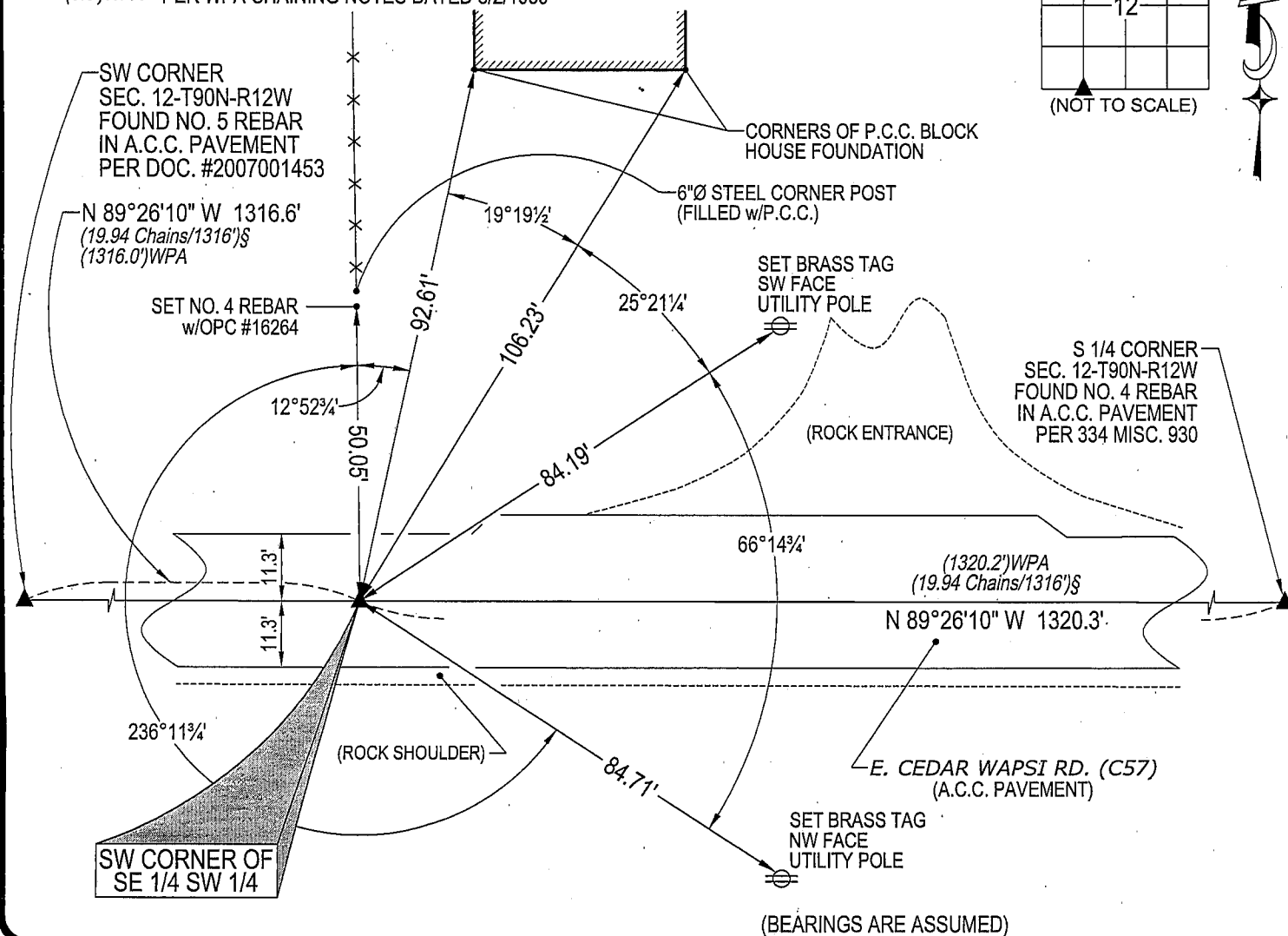
→ **SW CORNER OF SE 1/4 SW 1/4:** NO BLACK HAWK COUNTY ENGINEER REFERENCE TIES AVAILABLE.
AUDITOR'S SURVEY BOOK 1 PAGE 622 BY JOHN BALL DATED 5/1884 CALLS FOR [STONE & STAKE]. WPA
CHAINING NOTES DATED 8/2/1939 SHOW A FENCE RUNNING NORTH 1,316' EAST OF THE SW CORNER. SET
"COTTON GIN SPIKE" IN A.C.C. PAVEMENT ON A STRAIGHT LINE BETWEEN THE SW CORNER AND S 1/4
CORNER AND IN LINE WITH FENCE RUNNING NORTH FROM A 6"Ø STEEL CORNER POST (FILLED W/P.C.C.).
"COTTON GIN SPIKE" IS 0.2' NORTH OF APPROXIMATE CENTERLINE JOINT.

PLAN VIEW

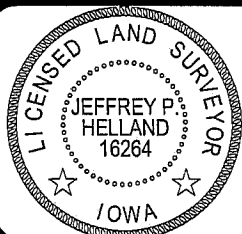
(SHOW A MINIMUM OF THREE REFERENCE TIES TO DURABLE PHYSICAL OBJECTS, RELEVANT MONUMENTS AND PHYSICAL
CONDITIONS THAT WILL ENABLE RECOVERY OF THE CORNER.)

(0.0')§ - PER AUDITOR'S SURVEY BK 1 PG 622 BY JOHN BALL DATED 5/1884

(0.0')WPA - PER WPA CHAINING NOTES DATED 8/2/1939



(BEARINGS ARE ASSUMED)

HELLAND ENGINEERING & SURVEYING, LTD.
1107 Technology Parkway
Cedar Falls, Iowa 50613-6951
(319)-266-0161SHINER = 8D NAIL & 1 5/16"Ø METAL SHINER
BRASS TAG = 13/16"Ø BRASS TAG
OPC = PLASTIC CAP (O=ORANGE, R=RED, Y=YELLOW)
(00') RECORDED AS FILE NAME: 07-274C1.DWGI hereby certify that this land surveying document was prepared
and the related survey work was performed by me or under my
direct personal supervision and that I am a duly licensed Land
Surveyor under the laws of the State of Iowa.

Jeffrey P. Helland 12/7/07

Jeffrey P. Helland
License Number 16264
My license renewal date is December 31, 2007.
All pages or sheets are covered by this seal except:

LIST CORNERS TO BE INDEXED

CORNER	SECTION	TOWNSHIP	RANGE
SW CORNER SE 1/4 SW 1/4	12	90N	12W