

Jeffrey P. Helland, 1107 Technology Parkway, Cedar Falls, Iowa 50613-6951, (319)-266-0161

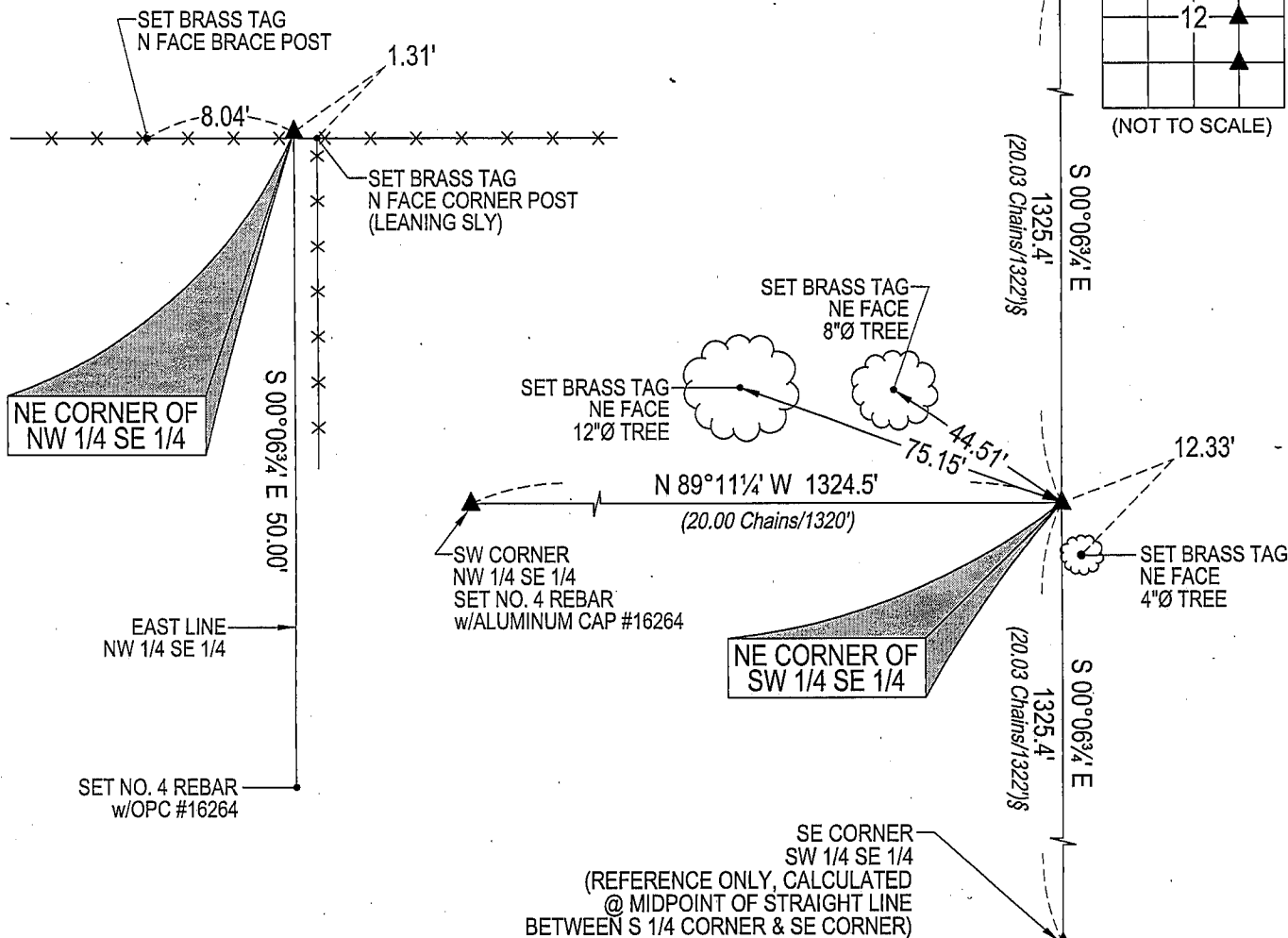
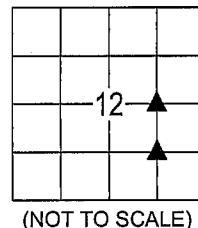
UNITED STATES PUBLIC LAND SURVEY CORNER CERTIFICATE
OFLAND SURVEY MONUMENTS SITUATED IN SECTION NO. 12, TOWNSHIP NO. 90 NORTH, RANGE
NO. 12 WEST OF THE FIFTH PRINCIPAL MERIDIAN, BLACK HAWK COUNTY, IOWA.
PREVIOUSLY RECORDED IN N/A(SHOW REASON FOR PREPARING THIS CERTIFICATE, THE EVIDENCE AND DETAILED PROCEDURES USED IN ESTABLISHING THE
CORNER POSITIONS AND MONUMENTATION FOUND OR PLACED.)

MONUMENT DESCRIPTION AND REMARKS:

NO USPLSCC ON FILE. SURVEY COMPLETED IN THE SE 1/4 AND SW 1/4 OF SEC. 12-T90N-R12W.

→ **NE CORNER OF NW 1/4 SE 1/4:** NO BLACK HAWK COUNTY ENGINEER REFERENCE TIES AVAILABLE.
AUDITOR'S SURVEY BOOK 1 PAGE 622 BY JOHN BALL DATED 5/1884 CALLS FOR [STONE]. STARTED
EXCAVATION AROUND CORNER POST, FOUND 1.1'(N-S)x1.3'±(E-W)(TOP VIEW) LIGHT BROWN GRANITE STONE
1.3' DEEP, SET "MAG" NAIL IN TOP CENTER OF STONE. SET NO. 4 REBAR w/OPC #16264 0.50' NORTH FOR
MAGNETIC DETECTION AT SAME HEIGHT AS TOP OF STONE.→ **NE CORNER OF SW 1/4 SE 1/4:** NO BLACK HAWK COUNTY ENGINEER REFERENCE TIES AVAILABLE.
AUDITOR'S SURVEY BOOK 1 PAGE 622 BY JOHN BALL DATED 5/1884 SHOWS CORNER BUT DOES NOT STATE IF
ANYTHING WAS SET. SET NO. 4 REBAR w/ALUMINUM CAP #16264 @ MIDPOINT OF A STRAIGHT LINE BETWEEN
THE NE CORNER OF NW 1/4 SE 1/4 AND THE SE CORNER OF THE SW 1/4 SE 1/4.(SHOW A MINIMUM OF THREE REFERENCE TIES TO DURABLE PHYSICAL OBJECTS, RELEVANT MONUMENTS AND PHYSICAL
CONDITIONS THAT WILL ENABLE RECOVERY OF THE CORNER.)

PLAN VIEW

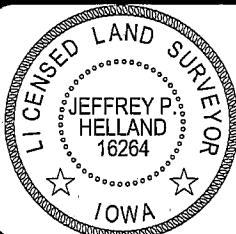
NE CORNER
NW 1/4 SE 1/4

(0.0')§ - PER AUDITOR'S SURVEY BK 1 PG 622 BY JOHN BALL DATED 5/1884

(BEARINGS ARE ASSUMED)



HELLAND ENGINEERING & SURVEYING, LTD.

1107 Technology Parkway
Cedar Falls, Iowa 50613-6951
(319)-266-0161SHINER = 8D NAIL & 1 5/16"Ø METAL SHINER
BRASS TAG = 13/16"Ø BRASS TAG
OPC = PLASTIC CAP (O=ORANGE, R=RED, Y=YELLOW)
(00') RECORDED AS FILE NAME: 07-274C3.DWGI hereby certify that this land surveying document was prepared
and the related survey work was performed by me or under my
direct personal supervision and that I am a duly licensed Land
Surveyor under the laws of the State of Iowa.*Jeffrey P. Helland* 12/7/07Jeffrey P. Helland
License Number 16264

My license renewal date is December 31, 2007.

All pages or sheets are covered by this seal except:

LIST CORNERS TO BE INDEXED

CORNER	SECTION	TOWNSHIP	RANGE
NE CORNER NW 1/4 SE 1/4	12	90N	12W
NE CORNER SW 1/4 SE 1/4	12	90N	12W