

Jeffrey P. Helland, 1107 Technology Parkway, Cedar Falls, Iowa 50613-6951, (319)-266-0161

# UNITED STATES PUBLIC LAND SURVEY CORNER CERTIFICATE OF

LAND SURVEY MONUMENTS SITUATED IN SECTION NO. 12, TOWNSHIP NO. 90 NORTH, RANGE  
NO. 12 WEST OF THE FIFTH PRINCIPAL MERIDIAN, BLACK HAWK COUNTY, IOWA.  
PREVIOUSLY RECORDED IN N/A

(SHOW REASON FOR PREPARING THIS CERTIFICATE, THE EVIDENCE AND DETAILED PROCEDURES USED IN ESTABLISHING THE  
CORNER POSITIONS AND MONUMENTATION FOUND OR PLACED.)

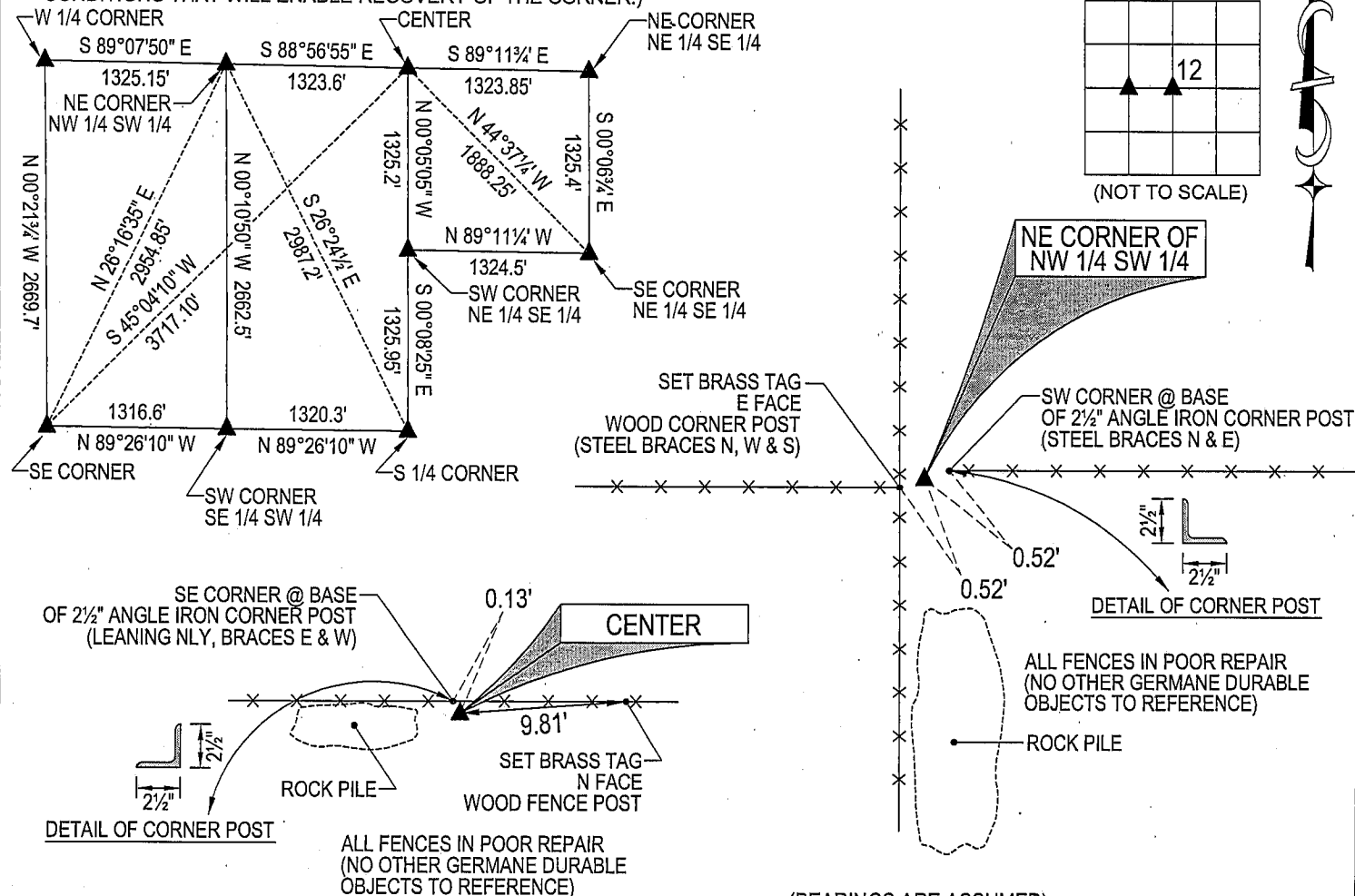
## MONUMENT DESCRIPTION AND REMARKS:

NO USPLSCC ON FILE. SURVEY COMPLETED IN THE SE 1/4 AND SW 1/4 OF SEC. 12-T90N-R12W.

- **NE CORNER OF NW 1/4 SW 1/4:** NO BLACK HAWK COUNTY ENGINEER REFERENCE TIES AVAILABLE. AUDITOR'S SURVEY BOOK 1 PAGE 622 BY JOHN BALL DATED 5/1884 CALLS FOR [STONE]. EXCAVATED AND PROBED TO DEPTH OF 3'± IN A 3'±Ø AREA AROUND TWO CORNER POSTS. SEVERAL DIFFERENT STONES (VARIOUS SIZE AND MATERIAL, MOSTLY GRANITE) FOUND IN THE AREA, MOST LIKELY REMOVED FROM CULTIVATED FIELD AND STOCKPILED NEXT TO CORNER POSTS. SET NO. 4 REBAR w/ALUMINUM CAP #16264 MIDWAY BETWEEN AN ANCIENT WOOD CORNER POST AND 2½" ANGLE IRON CORNER POST.
- **CENTER:** NO BLACK HAWK COUNTY ENGINEER REFERENCE TIES AVAILABLE. AUDITOR'S SURVEY BOOK 1 PAGE 622 BY JOHN BALL DATED 5/1884 CALLS FOR [STONE & STAKE]. PROBED AND EXCAVATED TO DEPTH OF 3.5'± A 5'±Ø AREA AROUND 2½" ANGLE IRON CORNER POST. SEVERAL DIFFERENT STONES (VARIOUS SIZE AND MATERIAL, MOSTLY GRANITE) FOUND IN THE AREA (ALL FOUND ON SOUTH SIDE OF FENCE), MOST LIKELY REMOVED FROM CULTIVATED FIELD AND STOCKPILED NEXT TO CORNER POST. SET NO. 4 REBAR w/ALUMINUM CAP #16264 NEAR SOUTHEAST CORNER OF 2½" ANGLE IRON CORNER POST (LEANING NORTHERLY).

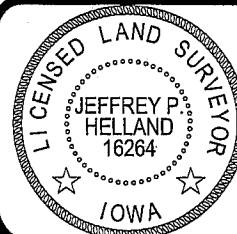
## PLAN VIEW

(SHOW A MINIMUM OF THREE REFERENCE TIES TO DURABLE PHYSICAL OBJECTS, RELEVANT MONUMENTS AND PHYSICAL  
CONDITIONS THAT WILL ENABLE RECOVERY OF THE CORNER.)



HELLAND ENGINEERING & SURVEYING, LTD.  
1107 Technology Parkway  
Cedar Falls, Iowa 50613-6951  
(319)-266-0161

SHINER = 8D NAIL & 1 5/16"Ø METAL SHINER  
BRASS TAG = 13/16"Ø BRASS TAG  
OPC = PLASTIC CAP (O=ORANGE, R=RED, Y=YELLOW)  
(00') RECORDED AS FILE NAME: 07-274C2.DWG



I hereby certify that this land surveying document was prepared  
and the related survey work was performed by me or under my  
direct personal supervision and that I am a duly licensed Land  
Surveyor under the laws of the State of Iowa.

*Jeffrey P. Helland* 12/7/07  
Jeffrey P. Helland  
License Number 16264  
My license renewal date is December 31, 2007.  
All pages or sheets are covered by this seal except:

## LIST CORNERS TO BE INDEXED

CORNER	SECTION	TOWNSHIP	RANGE
CENTER	12	90N	12W
NE CORNER NW 1/4 SW 1/4	12	90N	12W