

Michael R. Fagle, P.L.S. AECOM, 501 Sycamore St., Suite 222, Waterloo, Iowa 50703 1-319-232-6531

UNITED STATES PUBLIC LAND SURVEY CORNER CERTIFICATE
OF

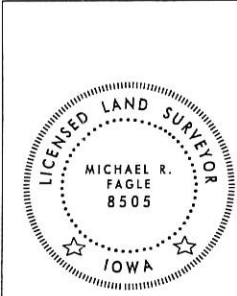
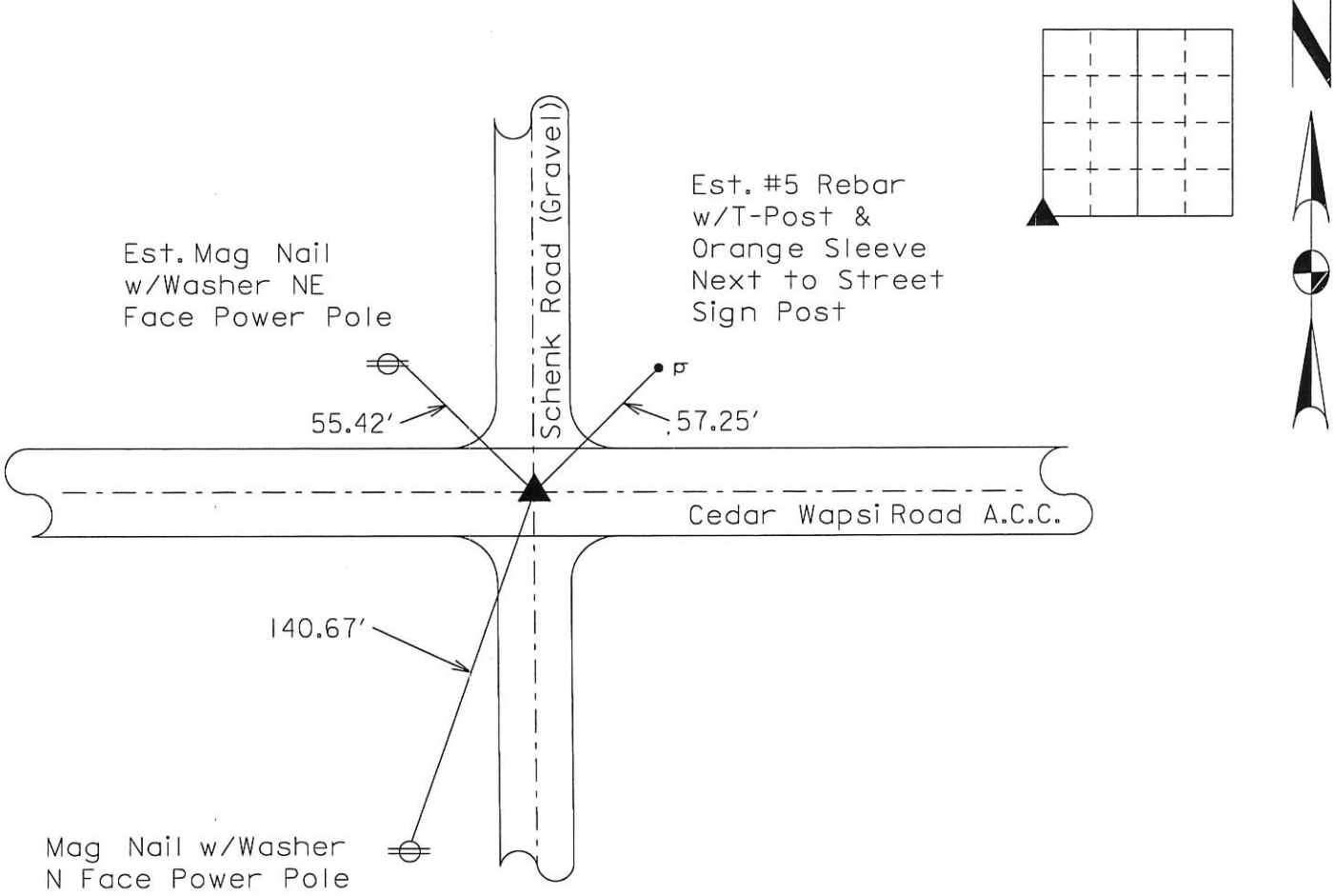
Land Survey Monuments situated in Section 9, Township 90 North,
Range 12 West, of the Fifth Principal Meridian, Black Hawk
County, Iowa. Previously recorded in File Number 2006-00007404
in County Recorder's Office. (Book, Page, Document Number, etc.)

(Show reason for preparing this certificate, the evidence and detailed procedures used in establishing the corner positions and monumentation found or placed.)

Monument Description and Remarks: Found #5 rebar located 0.20' South of
centerline ACC joint from existing ties recorded in file number 2006-00007404
in the office of the Black Hawk County Recorder. The existing Southwesterly
tie point was missing. Retied the section corner.

PLAN - VIEW

(Show a minimum of three reference ties to durable physical objects, relevant monuments and physical conditions that will enable recovery of the corner.)



I hereby certify that this Land Surveying document was prepared by me or under my direct personal supervision and that I am a duly Licensed Land Surveyor under the laws of the State of Iowa.
Michael R. Fagle 12-10-2016
MICHAEL R. FAGLE Date
License number 8505
My license renewal date is December 31, 2016
Pages or sheets covered by this seal:
THIS SHEET

List Corners to be Indexed			
Corners	Section	Twp	Range
Southwest Corner	9	T 90 N	R 12 W
Southeast Corner	8	T 90 N	R 12 W
Northwest Corner	16	T 90 N	R 12 W
Northeast Corner	17	T 90 N	R 12 W