

Doc ID: 004675030001 Type: GEN
Kind: CORNER
Recorded: 01/03/2012 at 03:41:04 PM
Fee Amt: \$7.00 Page 1 of 1
Black Hawk County Iowa
JUDITH A MCCARTHY RECORDER
File **2012-00012361**

Jeffrey P. Helland, 1107 Technology Parkway, Cedar Falls, Iowa 50613-6951, (319)-266-0161

UNITED STATES PUBLIC LAND SURVEY CORNER CERTIFICATE OF

LAND SURVEY MONUMENTS SITUATED IN SECTION NO. 8, TOWNSHIP NO. 90 NORTH, RANGE
NO. 12 WEST OF THE FIFTH PRINCIPAL MERIDIAN, BLACK HAWK COUNTY, IOWA.
PREVIOUSLY RECORDED IN BOOK 340 PAGE 983

(SHOW REASON FOR PREPARING THIS CERTIFICATE, THE EVIDENCE AND DETAILED PROCEDURES USED IN ESTABLISHING THE
CORNER POSITIONS AND MONUMENTATION FOUND OR PLACED.)

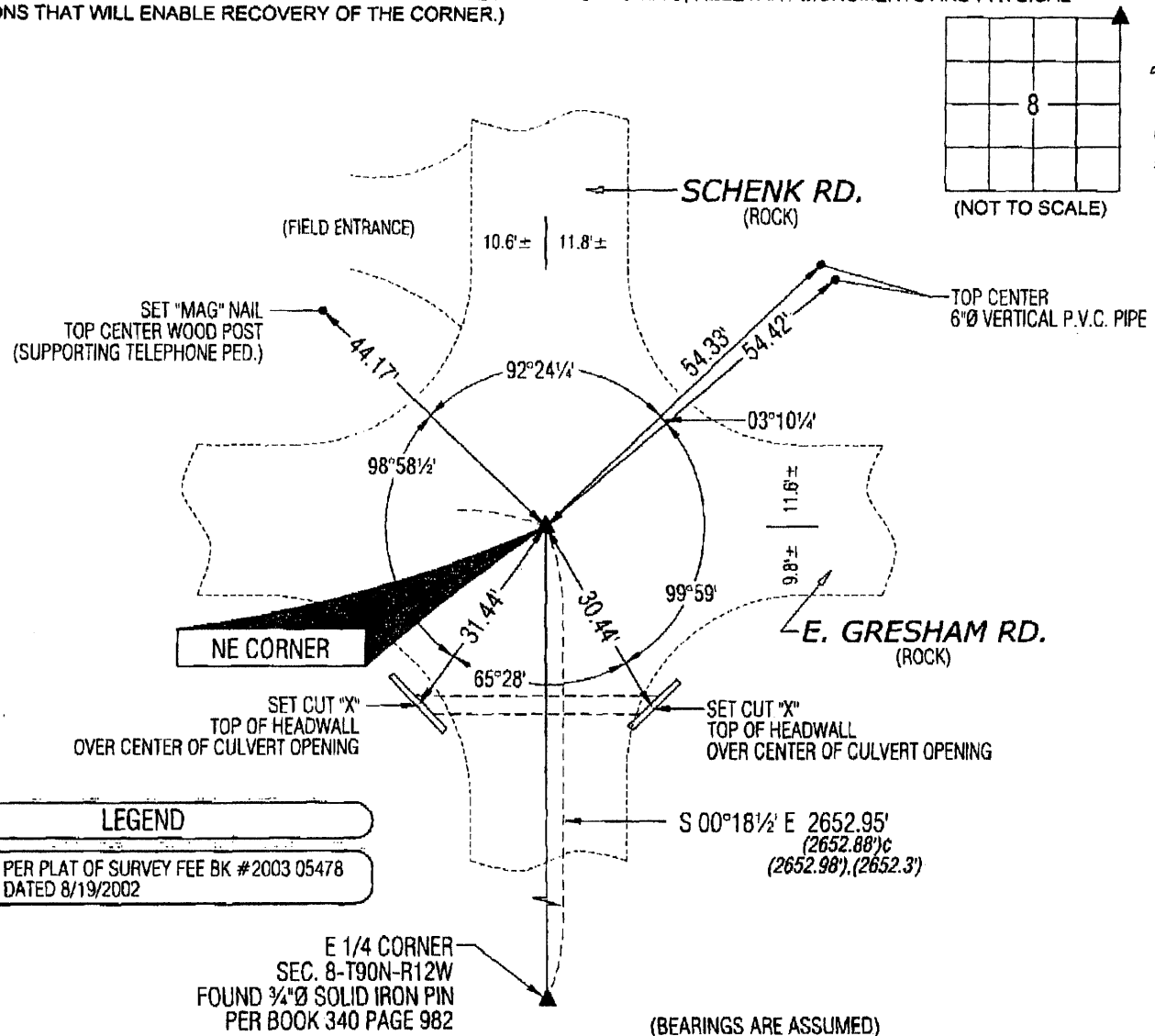
MONUMENT DESCRIPTION AND REMARKS:

USPLSCC BOOK 340 PAGE 983 MONUMENTATION HAS CHANGED. SURVEY COMPLETED IN THE NE 1/4 OF SEC.
8-T90N-R12W.

→ **NE CORNER:** W.P.A. NOTES DATED 8/7/1939 CALLS FOR [AT LOCATION INDICATED BY RANDOM LINE DUG HOLE 4FT
SQUARE x 18" DEEP. FOUND LIME STONES: 10"x6"x5", 11"x8"x4", 9"x6"x2", 9"x6"x2", 10"x7"x2", AND 8"x5"x2". OLD OAK HUB
2"x2"x28". LOWERED ALL EVIDENCE IN PLACE AND SET CM ON TOP WITH CAP MARKED]. USPLSCC BOOK 340 PAGE 983
DATED 8/22/2000 CALLS FOR [FOUND 1/2 INCH REBAR IRON PIN WITH "RED" PLASTIC IDENTIFICATION CAP, MARKED "PLS -
10793", SET BY TERRY D. VAN LANINGHAM, APPROXIMATELY 4 INCHES DEEP, BELOW SURFACE OF GRANULAR SURFACED
ROADWAY.]. PLAT OF SURVEY FEE BOOK #2003 05478 DATED 8/19/2002 CALLS FOR [FOUND 1/2"Ø REBAR]. FOUND NO. 4
REBAR (0.4' DEEP) CORRESPONDING WITHIN REASON TO REMAINING REFERENCE TIES.

PLAN VIEW

(SHOW A MINIMUM OF THREE REFERENCE TIES TO DURABLE PHYSICAL OBJECTS, RELEVANT MONUMENTS AND PHYSICAL
CONDITIONS THAT WILL ENABLE RECOVERY OF THE CORNER.)

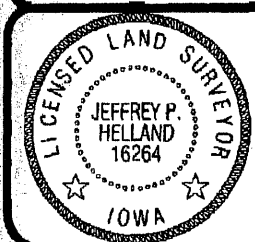


LEGEND
(0.0') PER PLAT OF SURVEY FEE BK #2003 05478
DATED 8/19/2002

(BEARINGS ARE ASSUMED)

HES HELLAND ENGINEERING & SURVEYING, LTD.
1107 Technology Parkway
Cedar Falls, Iowa 50613-6951
(319)-266-0161

SHINER = 8D NAIL & 1 5/16"Ø METAL SHINER
BRASS TAG = 8D NAIL & 13/16"Ø BRASS TAG
OPC = PLASTIC CAP (O=ORANGE, R=RED, Y=YELLOW)
(00') RECORDED AS FILE NAME: 11-266C2.DWG



I hereby certify that this land surveying document was prepared
and the related survey work was performed by me or under my
direct personal supervision and that I am a duly licensed Land
Surveyor under the laws of the State of Iowa.
Jeffrey P. Helland 12/4/11
Jeffrey P. Helland
License Number 16264
My license renewal date is December 31, 2011.
All pages or sheets are covered by this seal except:

LIST CORNERS TO BE INDEXED			
CORNER	SECTION	TOWNSHIP	RANGE
NE CORNER	8	90N	12W
SE CORNER	5	90N	12W
SW CORNER	4	90N	12W
NW CORNER	9	90N	12W