

SC
MISC
INDEX
MARGIN
PROOF
COMPARE

010034
FILED FOR RECORD Nov 9, 2000 AT
4:00 P M., AND RECORDED IN BOOK 340
OF MISC. PAGE 982
RECORDER
FEE 1-5.00/
KESS & ASSOCIATES
723 BROADWAY ST WATERLOO IA 50703

Kirk D. Eschliman, P.L.S. Iowa Lic. No. 9961, 723 Broadway Street, Waterloo, Iowa 50703 - Phone: 319-234-0509

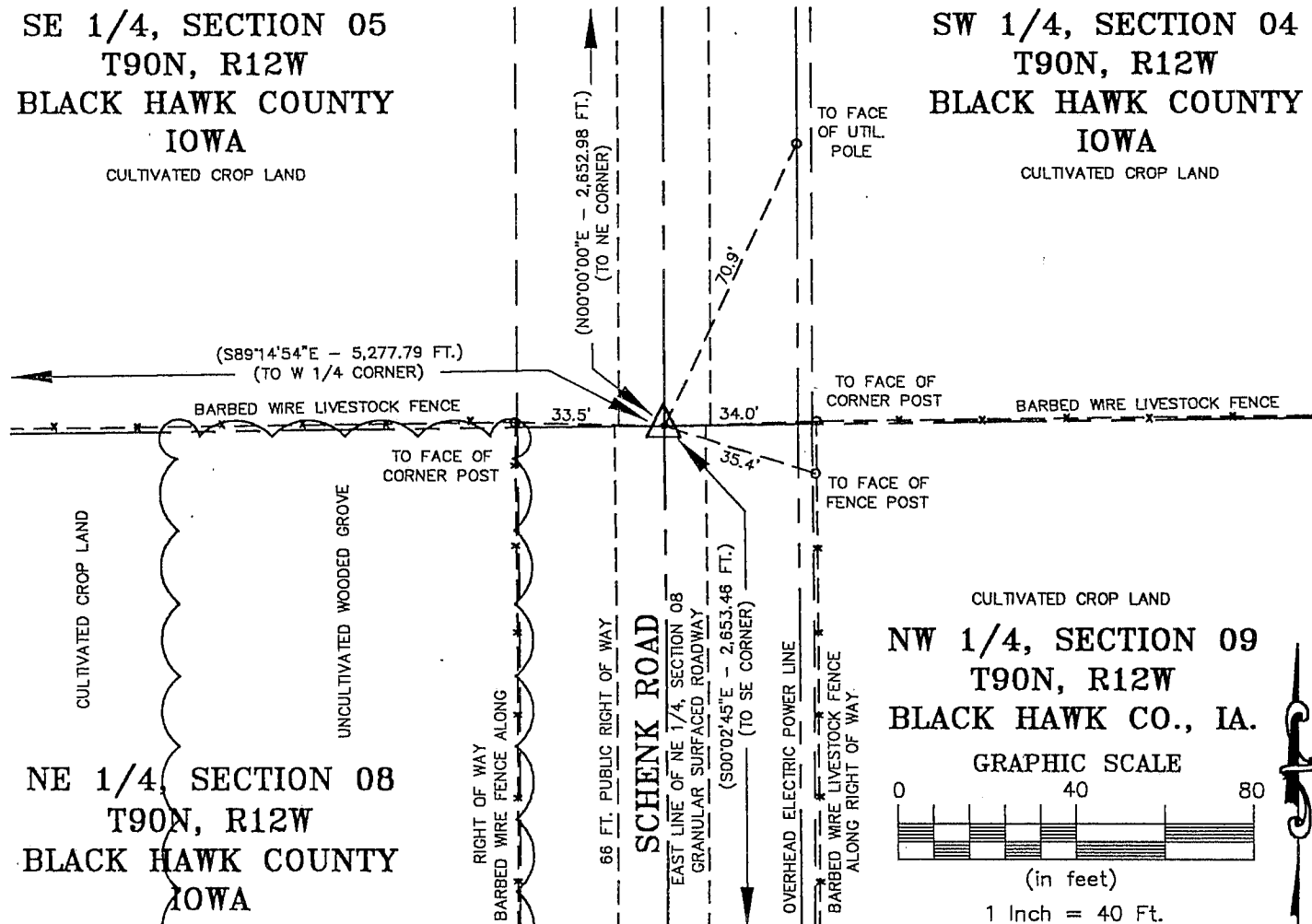
UNITED STATES PUBLIC LAND SURVEY CORNER CERTIFICATE OF

LAND SURVEY MONUMENTS SITUATED IN SECTION EIGHT (08), TOWNSHIP NINETY (90) NORTH
RANGE TWELVE (12) WEST, OF THE FIFTH PRINCIPAL MERIDIAN, BLACK HAWK COUNTY, IOWA.
PREVIOUSLY RECORDED IN (NOT PREVIOUSLY RECORDED) (BOOK, PAGE, DOCUMENT NUMBER, ETC.) IN THE COUNTY RECORDER'S OFFICE.

(SHOW REASON FOR PREPARING THIS CERTIFICATE, THE EVIDENCE AND DETAILED PROCEDURES USED IN ESTABLISHING THE CORNER POSITIONS AND MONUMENTATION FOUND OR PLACED.)

MONUMENT DESCRIPTION AND REMARKS: FOUND CONCRETE MONUMENT WITH BROKEN TOP (NO BRASS CAP) AND
TOP 20 INCHES BROKEN, BASE UNALTERED AND SOLID, SET 3/4 INCH IRON PIN OVER REMNANT.

PLAN - VIEW



I HEREBY CERTIFY THAT THIS LAND SURVEYING DOCUMENT
WAS PREPARED AND RELATED SURVEY WORK WAS
PERFORMED BY ME OR UNDER MY DIRECT PERSONAL
SUPERVISION AND THAT I AM A DULY LICENSED LAND
SURVEYOR UNDER THE LAWS OF THE STATE OF IOWA.

Kirk D. Eschliman
KIRK D. ESCHLIMAN, P.L.S. IOWA LIC. NO. 9961
MY LICENSE RENEWAL DATE IS DECEMBER 31, 2001
PAGES OR SHEETS COVERED BY THIS SIGNATURE & SEAL: SHEET 1 OF 1

FOR: JEAN MARIE SCHMIDT
PARCEL "A", SE 1/4, SEC. 08,
T90N, R12W, BLACK HAWK CO., IA.

REQ. BY: JEAN M. SCHMIDT
MESA, ARIZONA



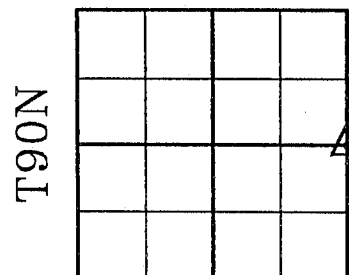
KESS & ASSOCIATES, INC.
PROFESSIONAL LAND SURVEYORS : 723 BROADWAY, WATERLOO, IOWA 50703-5811

DATE: 08/21/00 C.A.D.D. FILE: 00B22CCB.DWG PROJECT NO.: 00B22

List of corners to be indexed:

Corners	Section	Township	Range
E 1/4	08	T90N	R12W

SECTION 08



R12W