



Doc ID: 004675040001 Type: GEN
Kind: CORNER
Recorded: 01/03/2012 at 03:41:15 PM
Fee Amt: \$7.00 Page 1 of 1
Black Hawk County Iowa
JUDITH A MCCARTHY RECORDER

File 2012-00012362

Jeffrey P. Helland, 1107 Technology Parkway, Cedar Falls, Iowa 50613-6951, (319)-266-0161

UNITED STATES PUBLIC LAND SURVEY CORNER CERTIFICATE
OF

LAND SURVEY MONUMENTS SITUATED IN SECTION NO. 8, TOWNSHIP NO. 90 NORTH, RANGE
NO. 12 WEST OF THE FIFTH PRINCIPAL MERIDIAN, BLACK HAWK COUNTY, IOWA.
PREVIOUSLY RECORDED IN N/A

(SHOW REASON FOR PREPARING THIS CERTIFICATE, THE EVIDENCE AND DETAILED PROCEDURES USED IN ESTABLISHING THE
CORNER POSITIONS AND MONUMENTATION FOUND OR PLACED.)

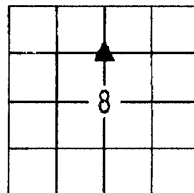
MONUMENT DESCRIPTION AND REMARKS:

NO USPLSCC ON FILE. SURVEY COMPLETED IN THE NE 1/4 OF SEC. 8-T90N-R12W.

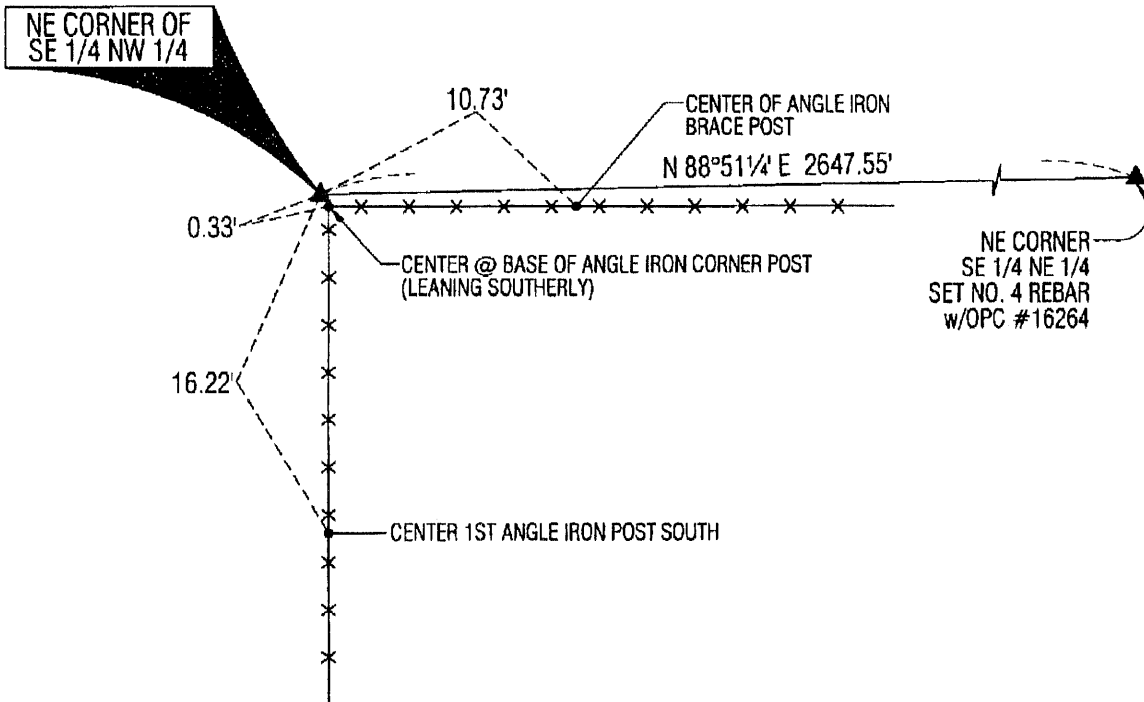
→ NE CORNER OF SE 1/4 NW 1/4: NO BLACK HAWK COUNTY ENGINEER'S REFERENCE TIES AVAILABLE. SET NO. 4 REBAR
w/OPC #16264 ON THE NORTHWEST SIDE OF AN ANGLE IRON CORNER POST (LEANING SOUTHERLY).

PLAN VIEW

(SHOW A MINIMUM OF THREE REFERENCE TIES TO DURABLE PHYSICAL OBJECTS, RELEVANT MONUMENTS AND PHYSICAL
CONDITIONS THAT WILL ENABLE RECOVERY OF THE CORNER.)



(NOT TO SCALE)

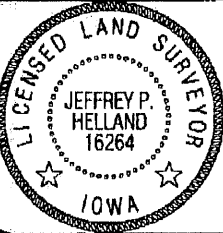


(BEARINGS ARE ASSUMED)



HELLAND ENGINEERING & SURVEYING, LTD.
1107 Technology Parkway
Cedar Falls, Iowa 50613-6951
(319)-266-0161

SHINER = 8D NAIL & 1 5/16"Ø METAL SHINER
BRASS TAG = 8D NAIL & 13/16"Ø BRASS TAG
OPC = PLASTIC CAP (O=ORANGE, R=RED, Y=YELLOW)
(00') RECORDED AS FILE NAME: 11-266C3.DWG



I hereby certify that this land surveying document was prepared
and the related survey work was performed by me or under my
direct personal supervision and that I am a duly licensed Land
Surveyor under the laws of the State of Iowa.

Jeffrey P. Helland 12/4/11
Jeffrey P. Helland
License Number 16264
My license renewal date is December 31, 2011.
All pages or sheets are covered by this seal except:

LIST CORNERS TO BE INDEXED

CORNER	SECTION	TOWNSHIP	RANGE
NE COR. SE 1/4 NW 1/4	8	90N	12W
SE COR. NE 1/4 NW 1/4	8	90N	12W
SW COR. NW 1/4 NE 1/4	8	90N	12W
NW COR. SW 1/4 NE 1/4	8	90N	12W