

SC  
MISC  
INDEX  
MARGIN  
PROOF  
COMPARE

BLACK HAWK COUNTY:SS  
Filed for record JUN 2, 2000 at 025025  
4:00 P.M and recorded in Book 338  
of MISC Page 641.  
Christie S. Busse Recorder

STEVE BUSSE P.O. BOX 241 508 ELM STREET ALLISON, IOWA 50602 319-267-2519

## UNITED STATES PUBLIC LAND SURVEY CORNER CERTIFICATE

Land Survey Monuments situated in Section 7, Township 90 North, Range 12 West, of the Fifth Principal Meridian, Black Hawk County, Iowa.

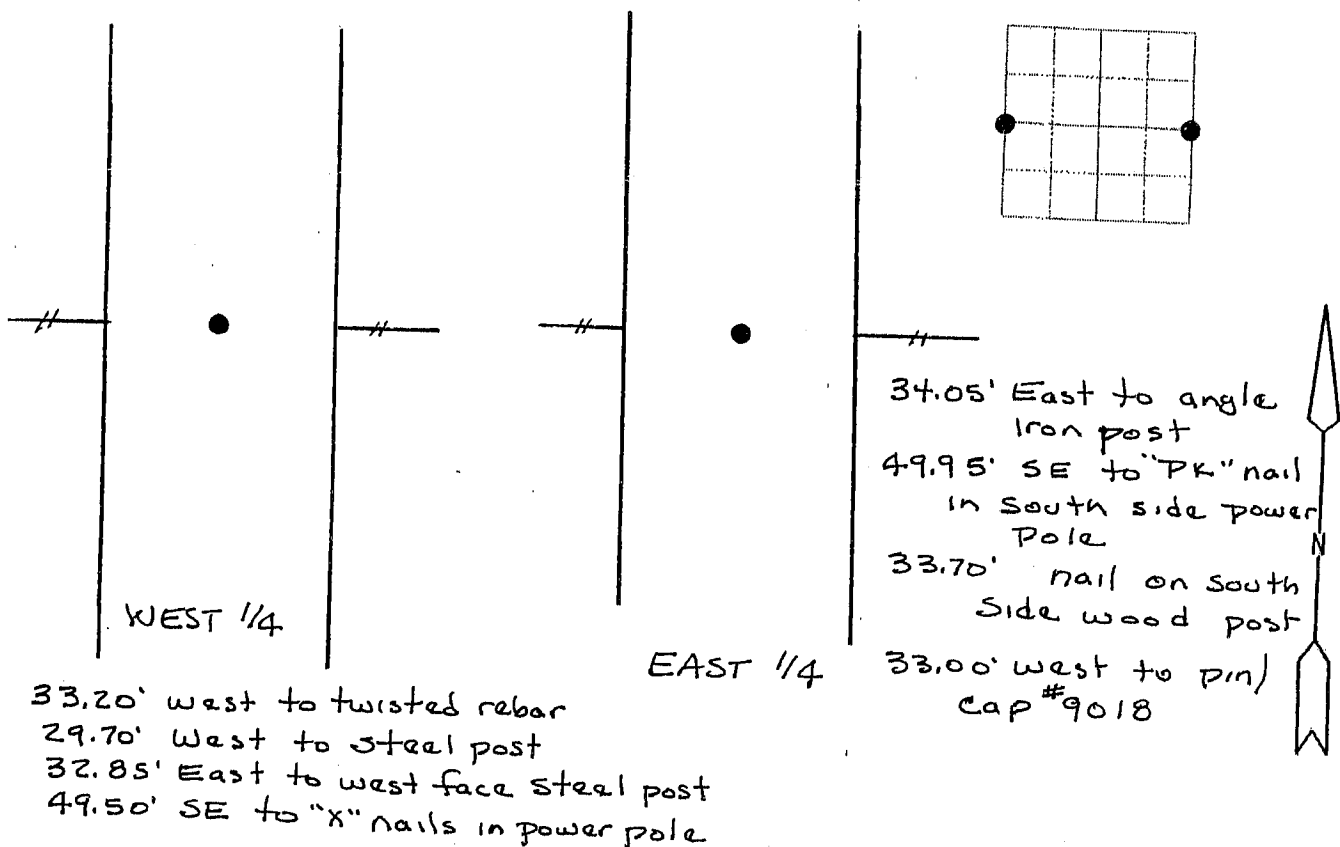
Previously recorded in N/A in County Recorder's Office.  
(book, page, document number, etc.)

(Show reason for preparing this certificate, the evidence and detailed procedures used in establishing the corner positions and monumentation found or placed.)

Monument Description and Remarks: Found 5/8" twisted rebar at west 1/4 corner.  
Found broken monu. at East 1/4 corner. Dog down and found  
iron pin along parts of broken conc. Raised iron pin with 1/2"  
rebar. Placed broken monument on north side of iron pin.  
Pin on fence line east and west

### PLAN - VIEW

(Show a minimum of three reference ties to durable physical objects, relevant monuments and physical conditions that will enable recovery of the corner)



I hereby certify that the survey work was completed and this land surveying document was prepared by me or under my direct personal supervision and that I am a duly licensed land surveyor under the laws of the state of Iowa

Signature: Steve Busse  
Name typed or printed: STEVE BUSSE

Date: 5/25/2000 Reg. No. 9018

My license renewal date is December 31, 2000

SEAL

Corners	List Corners to be Indexed		
	Section	Twp	Range
E 1/4	7	90	12
W 1/4	7	90	12