

**STEVE BUSSE      P.O. BOX 241      508 ELM STREET      ALLISON, IOWA 50602      319-267-2519**

# UNITED STATES PUBLIC LAND SURVEY CORNER CERTIFICATE

Land Survey Monuments situated in Section 7, Township 90 North, Range 12 West, of the Fifth Principal Meridian, Black Hawk County, Iowa.

Previously recorded in N/A in County Recorder's Office.  
(book, page, document number, etc.)

(Show reason for preparing this certificate, the evidence and detailed procedures used in establishing the corner positions and monumentation found or placed.)

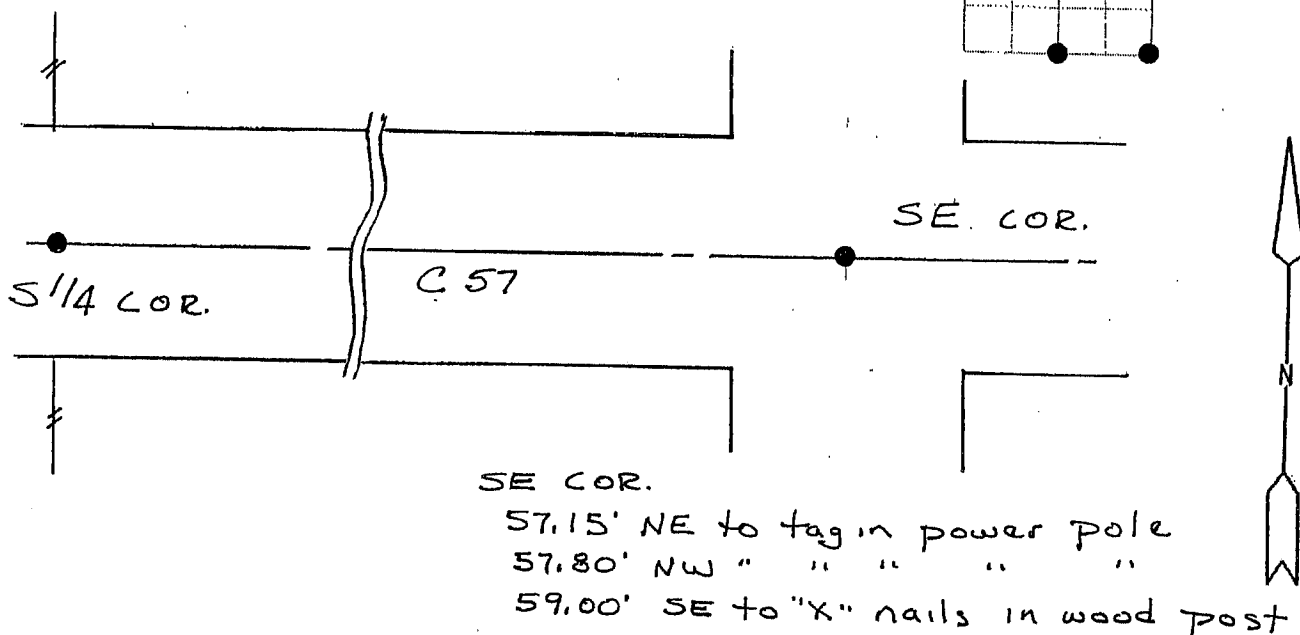
Monument Description and Remarks: Found iron pin in center of County blacktop at South 1/4 corner. Pin in line with fence North & South. Found pin in paving at center of intersection at SE corner.

## PLAN – VIEW

(Show a minimum of three reference ties to durable physical objects, relevant monuments and physical conditions that will enable recovery of the corner)

5 1/4 COR.

87.85' SW to tag in power pole  
50.20' South to angle iron post  
50.90' North to steel post filled with conc.



I hereby certify that the survey work was completed and this land surveying document was prepared by me or under my direct personal supervision and that I am a duly licensed land surveyor under the laws of the state of Iowa

Signature: Steve Busse  
Name typed or printed: STEVE BUSSE

Date: 5/25/08 Reg. No. 9018

My license renewal date is December 31, 2000

SEAL

### List Corners to be Indexed

Corners	Section	Twp	Range
S 1/4 COR.	7	90	12
SE COR.	7	90	12