

File **2013-00023682**

UNITED STATES PUBLIC LAND SURVEY CORNER CERTIFICATE OF

LAND SURVEY MONUMENTS SITUATED IN SECTION NO. 7, TOWNSHIP NO. 90 NORTH, RANGE
NO. 12 WEST OF THE FIFTH PRINCIPAL MERIDIAN, BLACK HAWK COUNTY, IOWA.
PREVIOUSLY RECORDED IN N/A

(SHOW REASON FOR PREPARING THIS CERTIFICATE, THE EVIDENCE AND DETAILED PROCEDURES USED IN ESTABLISHING THE CORNER POSITIONS AND MONUMENTATION FOUND OR PLACED.)

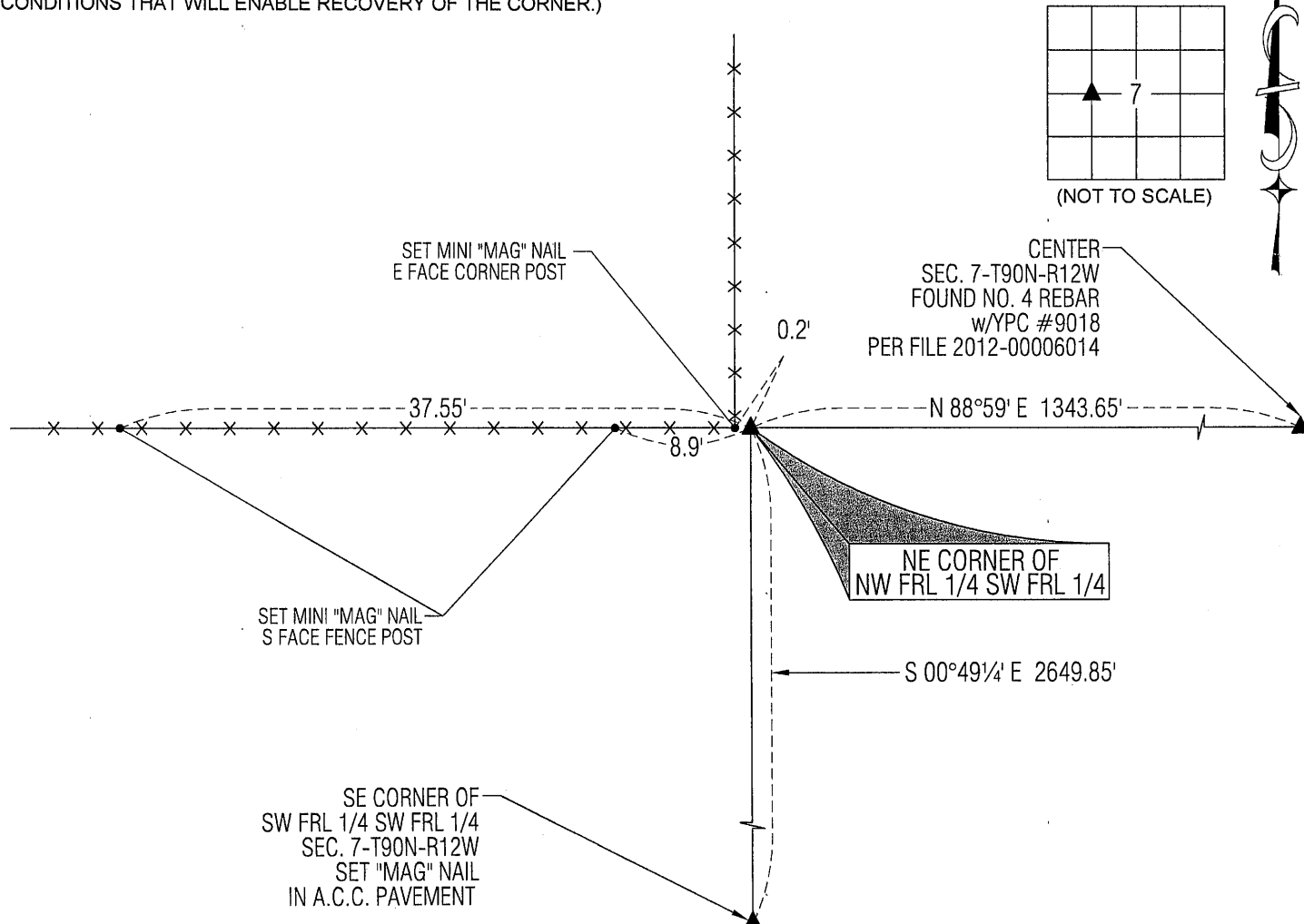
MONUMENT DESCRIPTION AND REMARKS:

NO USPLSCC ON FILE. SURVEY COMPLETED IN THE SE 1/4 SW FRL 1/4 & SW 1/4 SE 1/4 OF SEC. 7-T90N-R12W.

→ **NE CORNER OF NW FRL 1/4 SW FRL 1/4:** NO BLACK HAWK COUNTY ENGINEER TIES AVAILABLE. SEARCHED AREA WITH MAGNETIC DETECTOR AND PROBED IN 3' DIAMETER CIRCLE NOTHING FOUND. SET NO. 4 REBAR w/OPC #6505 ON EAST SIDE OF CORNER POST LEANING WESTERLY AND IN LINE w/ FENCES RUNNING NORTH & WEST.

PLAN VIEW

(SHOW A MINIMUM OF THREE REFERENCE TIES TO DURABLE PHYSICAL OBJECTS, RELEVANT MONUMENTS AND PHYSICAL CONDITIONS THAT WILL ENABLE RECOVERY OF THE CORNER.)

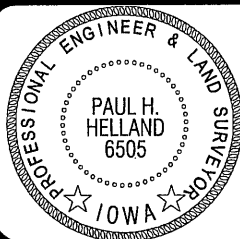


(BEARINGS ARE ASSUMED)



HELLAND ENGINEERING & SURVEYING, LTD.
1107 Technology Parkway
Cedar Falls, Iowa 50613-6951
(319)-266-0161

SHINER = 8d NAIL & 1 5/16"Ø METAL SHINER
BRASS TAG = 8d NAIL & 13/16"Ø BRASS TAG
OPC = PLASTIC CAP (O=ORANGE, R=RED, Y=YELLOW)
(00') RECORDED AS FILE NAME: 13-146-51.DWG



I hereby certify that this land surveying document was prepared and the related survey work was performed by me or under my direct personal supervision and that I am a duly licensed Professional Land Surveyor under the laws of the State of Iowa.

Paul H. Helland
License Number 6505
My license renewal date is December 31, 2013.
All pages or sheets are covered by this seal except:

LIST CORNERS TO BE INDEXED

CORNER	SECTION	TOWNSHIP	RANGE
NE COR. NWFRL ¼ SWFRL ¼	7	90N	12W
SE COR. SWFRL ¼ NWFRL ¼	7	90N	12W
SW COR. SE ¼ NWFRL ¼	7	90N	12W
NW COR. NE ¼ SWFRL ¼	7	90N	12W

(7.00)

10