

BLACK HAWK COUNTY ENGINEER

PREPARED BY: BLACK HAWK COUNTY ENGINEERS OFFICE PH.# (319) 833-3008 SLSI 9-94
316 E. FIFTH STREET, ROOM 211 WATERLOO, IOWA 50703 FAX.# (319) 833-3139 CERT 12-96

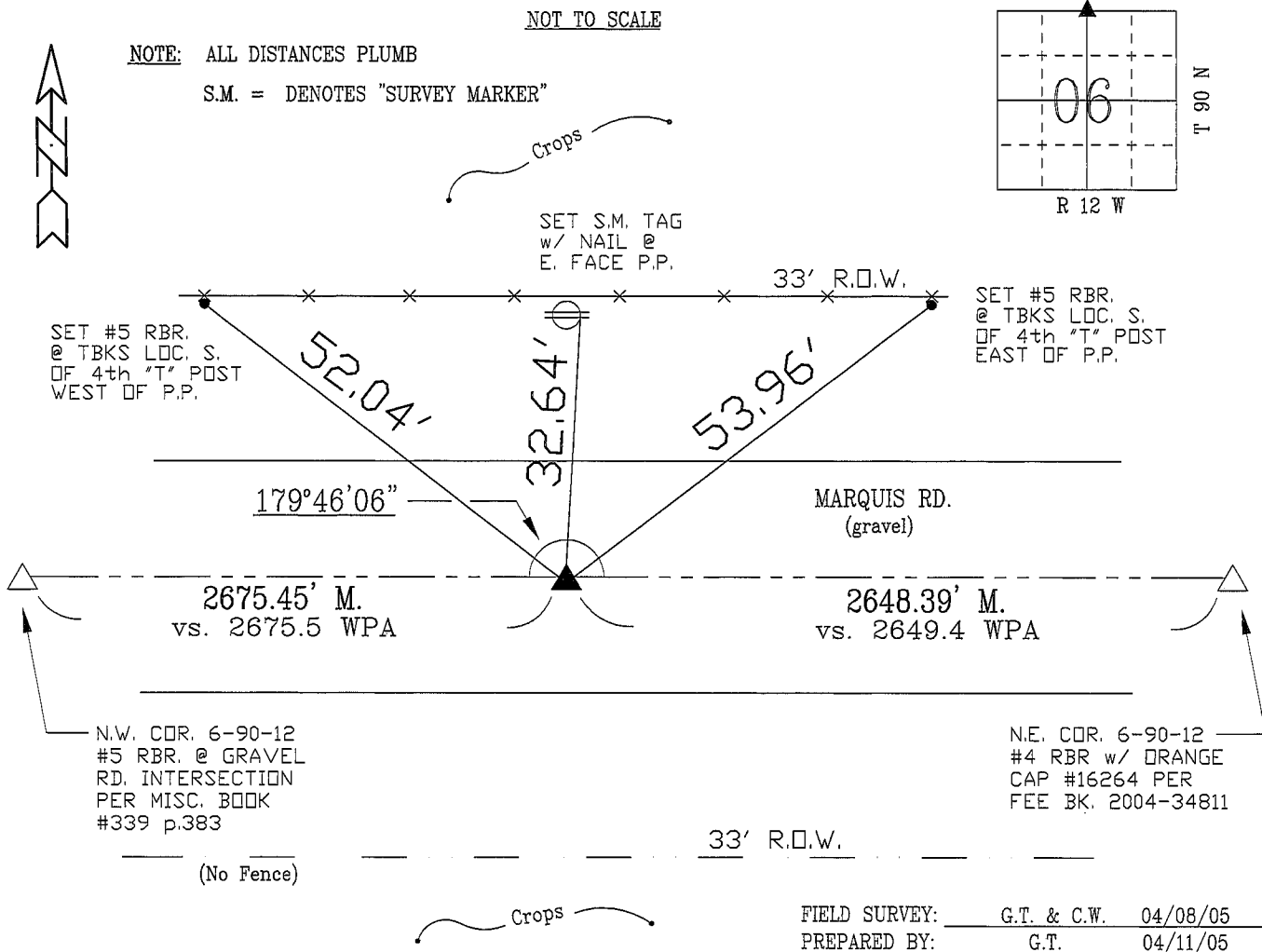
UNITED STATES PUBLIC LAND SURVEY CORNER CERTIFICATE OF
Land Survey Monuments situated in Section 06, Township 90 N,
Range 12 W, of the Fifth Principal Meridian, BLACK HAWK County, Iowa.
Previously recorded in Misc. Book N/A, Page N/A, in County Recorder's Office.

(Show reason for preparing this certificate, the evidence and detailed procedures used in establishing the corner positions and monumentation found or placed.)

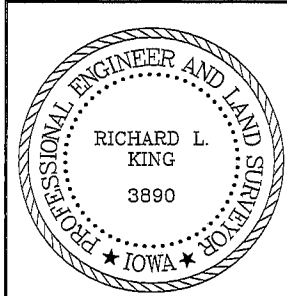
Monument Description and Remarks: N. 1/4 CORNER SECT. 06-90-12
FOUND STD. WPA C.M. LOCATED 2 FT. DEEP, PER WPA R/L MEAS. OF 12/8/41
BY "BOWSER". SET 21"x#5 RBR ON TOP OF C.M., WITH 2" DIA. ALUM. CAP
STAMPED "B.H. COUNTY LAND CORNER" AT 2" DEEP. LAND CORNER DISTANCES
PER RTK GPS MEAS. (LOCAL GROUND, HORIZ.), WITH LOCAL TIE DISTANCES
PER HORIZ. E.D.M. MEASURE. N. LINE OF N.E. 1/4 BRG. = N89°57'28"E, +/-
ASTRONOMIC/GEODETIC AS RTK GPS OBSERVED ON APRIL 8TH, 2005.

PLAN - VIEW

(Show a minimum of three reference ties to durable physical objects, relevant monuments and physical conditions that will enable recovery of the corner.)



CERTIFICATION



I hereby certify that this land surveying document was prepared and the related survey work was performed by me or under my direct personal supervision and that I am a duly licensed Land Surveyor under the laws of the State of Iowa.

Richard L. King 4/11/05 (date)
Richard L. King
License Number 3890
My license renewal date is December 31, 2005
Pages or sheets covered by this seal:
This Land Corner Certificate Only.

LIST CORNERS TO BE INDEXED

Corner	Section	Township	Range
N. 1/4	06	90 N	12 W