

*Dennis R. Prange*

BLACK HAWK COUNTY RECORDER

PRANGE SURVEYING 3304 PANTHER LANE CEDAR FALLS IA 50613

Prepared by Dennis R. Prange, L.S., Prange Surveying, 3304 Panther Lane, Cedar Falls, Iowa 50613, (319) 277-4935

# UNITED STATES PUBLIC LAND SURVEY CORNER CERTIFICATE OF

Land Survey Monuments situated in Section No. 5, Township No. 90 North, Range No. 12 West, of the Fifth Principal Meridian, Black Hawk County, Iowa.

Previously recorded in Book N/A on Page N/A in the office of the County Recorder.  
(book, page, document number, etc.)

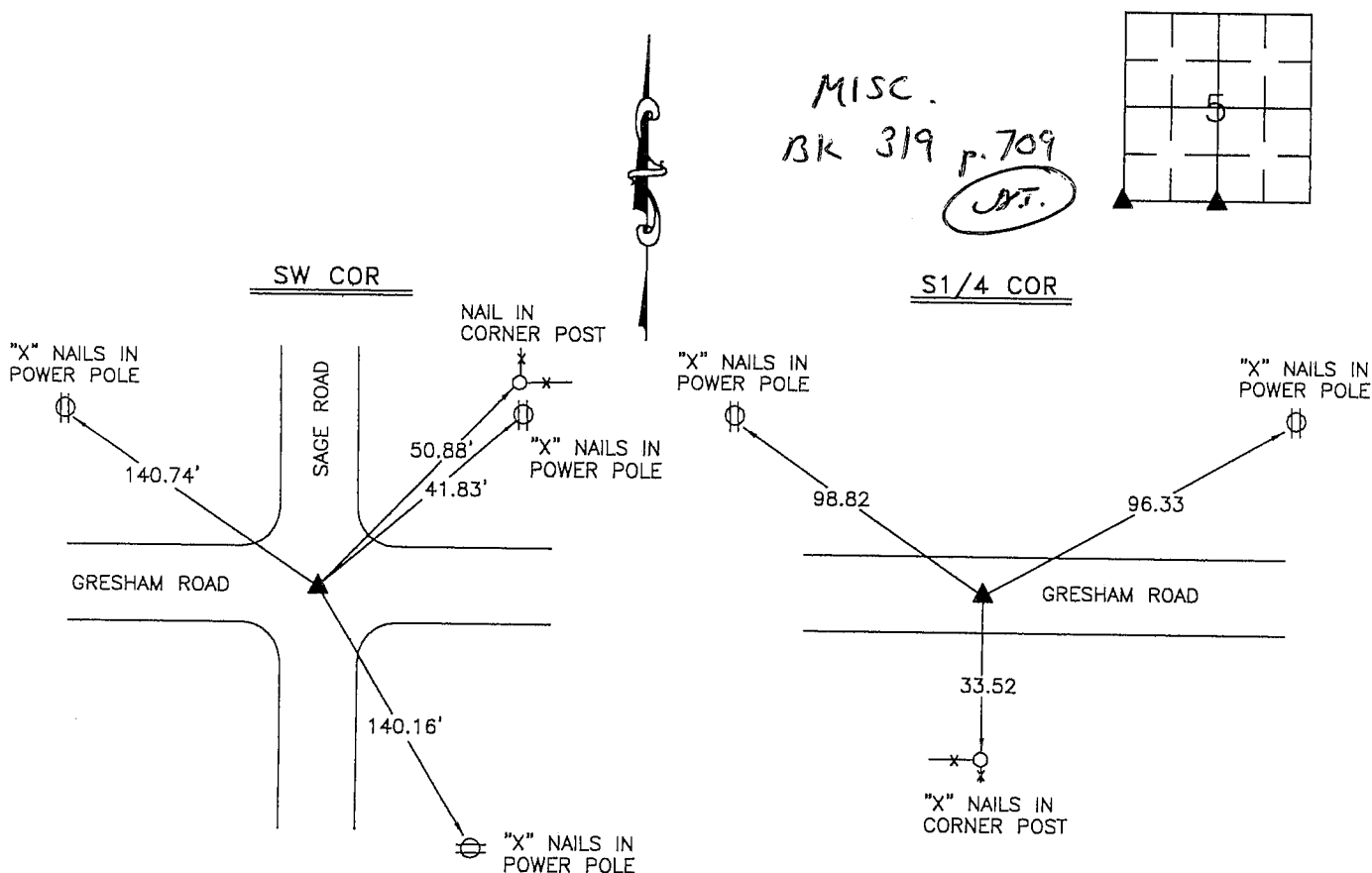
(Show reason for preparing this certificate, the evidence and detailed procedures used in establishing the corner positions and monumentation found or placed.)

Monument Description and Remarks: Southwest Corner Section 5-90-12 - Found  
Concrete Monument 12" deep. South 1/4 Corner Section 5-90-12 - Found  
Concrete Monument 2" deep.

## PLAN - VIEW

(Show a minimum of three reference ties to durable physical objects, relevant monuments and physical conditions that will enable recovery of the corner.)

NOT TO SCALE

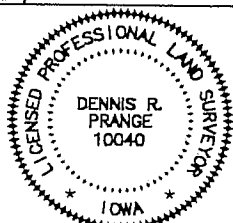


I hereby certify that this land surveying document was prepared by me or under my direct personal supervision and that I am a duly licensed Professional Land Surveyor under the laws of the State of Iowa.

Signed: *Dennis R. Prange*  
Dennis R. Prange, L.S. Iowa License No. 10040

Date: August 27, 2002

SEAL



My License renewal date is December 31, 2002.

Pages or sheets covered by this seal : this page only

Corners	List Corners to be Indexed	Section	Twp	Range
SW COR	5	90	12	
S1/4 COR	5	90	12	

Drawn by: DRP

Checked by: