

INDEX

BLACK HAWK COUNTY, IOWA:ss

FEE BOOK # 2004 34810

PROOF

FILED FOR RECORD MAY 27 2004 AT 4:00 P.M. FEE 1-5.00-5.00X

COMPARED

Patricia L. Loo

BLACK HAWK COUNTY RECORDER

HELLAND ENGINEERING & SURVEYING LTD

Jeffrey P. Helland, 1107 Technology Parkway, Cedar Falls, Iowa 50613-6951, (319)-266-0161

UNITED STATES PUBLIC LAND SURVEY CORNER CERTIFICATE
OFLAND SURVEY MONUMENTS SITUATED IN SECTION NO. 5, TOWNSHIP NO. 90 NORTH, RANGE
NO. 12 WEST OF THE FIFTH PRINCIPAL MERIDIAN, BLACK HAWK COUNTY, IOWA.

PREVIOUSLY RECORDED IN BOOK _____, PAGE _____.

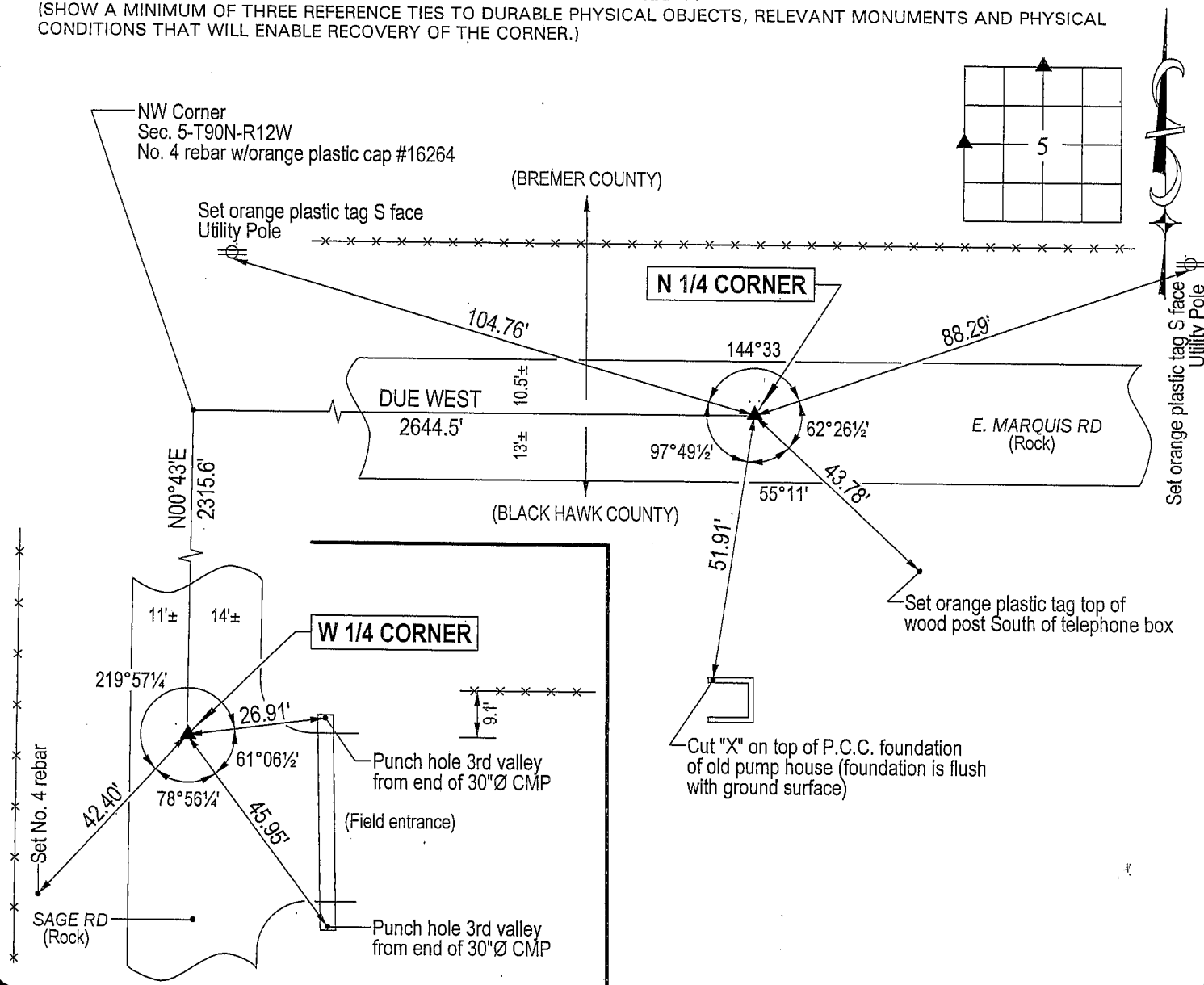
(SHOW REASON FOR PREPARING THIS CERTIFICATE, THE EVIDENCE AND DETAILED PROCEDURES USED IN ESTABLISHING THE
CORNER POSITIONS AND MONUMENTATION FOUND OR PLACED.)

MONUMENT DESCRIPTION AND REMARKS:

No corner certificates on file. Survey completed in the NWFRL 1/4 of Sec. 5-T90N-R12W.

- W 1/4 CORNER: Black Hawk County Engineer reference ties calls for "concrete monument w/brass cap". All five reference ties obliterated. Started excavation using W.P.A. chaining distances and random line notes. Found broken off concrete monument 2.2 feet. Set No. 4 rebar (1.8' long) w/orange plastic cap #16264 above said concrete monument.
- N 1/4 CORNER: Black Hawk County Engineer reference ties (checked 12/1958) calls for "concrete monument w/brass cap". Found concrete monument w/brass cap 2.3' deep using reference ties to pump house foundation to the South. Set No. 4 rebar w/orange plastic cap #16264 above said concrete monument.

PLAN VIEW

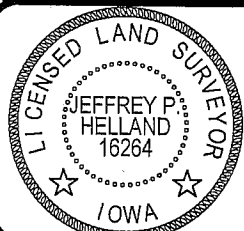
(SHOW A MINIMUM OF THREE REFERENCE TIES TO DURABLE PHYSICAL OBJECTS, RELEVANT MONUMENTS AND PHYSICAL
CONDITIONS THAT WILL ENABLE RECOVERY OF THE CORNER.)

HELLAND ENGINEERING & SURVEYING, LTD.

1107 Technology Parkway
Cedar Falls, Iowa 50613-6951
(319)-266-0161

(00.00) - Recorded As

File Name: 04-210c1.drg

I hereby certify that this land surveying document was prepared
and the related survey work was performed by me or under my
direct personal supervision and that I am a duly licensed Land
Surveyor under the laws of the State of Iowa.*Jeffrey P. Helland 5/25/04*
Jeffrey P. Helland
License Number 16264
My license renewal date is December 31, 2005.
All pages or sheets are covered by this seal except:

LIST CORNERS TO BE INDEXED

CORNER	SECTION	TOWNSHIP	RANGE
W 1/4 CORNER	5	90N	12W
N 1/4 CORNER	5	90N	12W

Rec