

Recorded

UNITED STATES PUBLIC LAND SURVEY CORNER CERTIFICATE

OF

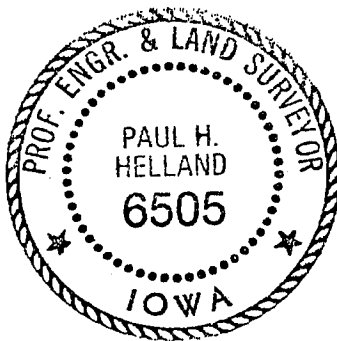
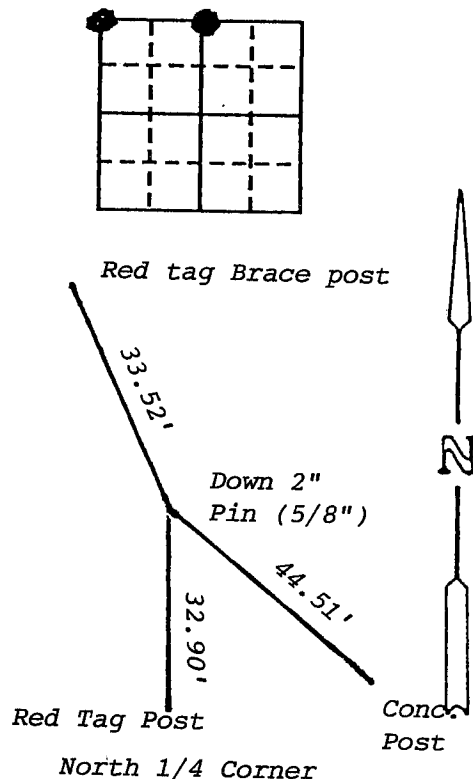
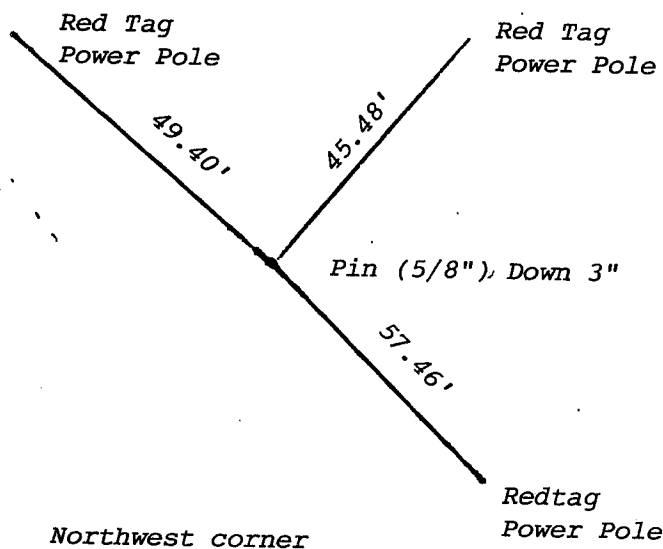
Land Survey Monuments situated in Section 4, Township 90, Range 12, of the Fifth Principal Meridian, Black hawk County, Iowa.
Previously recorded in Book 292, Page 213.

(Show reason for preparing this certificate, the evidence and detailed procedures used in establishing the corner positions and monumentation found or placed.)

Monument Description and Remarks: Found Pin at Northwest corner
Found Pin at North 1/4 corner
Survey done in NW 1/4 Sec. 4-90-12

PLAN - VIEW

(Show a minimum of three reference ties to durable physical objects, relevant monuments and physical conditions that will enable recovery of the corner.)



I hereby certify that the survey work was completed and this certificate was prepared by me or under my direct personal supervision and that I am a duly registered land surveyor under the laws of the state of Iowa.

Paul H. Helland 3/1/91
REGISTERED LAND SURVEYOR NO. 6505

List Corners to be Indexed

Corners	Section	Twp	Range
NW	4	90	12
N 1/4	4	90	12