

PROOF FILED FOR RECORD NOV 5, 2002, AT 4:00 P. M. FEE 1-5.00/

COMPARED

BLACK HAWK COUNTY RECORDER

STEVE BUSSE BOX 241 ALISON IA 50602

STEVE BUSSE P.O. BOX 241 508 ELM STREET ALLISON, IOWA 50602 219-267-2519

UNITED STATES PUBLIC LAND SURVEY CORNER CERTIFICATE

Land Survey Monuments situated in Section 3 Township 90 North
Range: 12 West Of the Fifth Principal Meridian, ~~BLACK HAWK~~ CLATSOP County, Iowa.
Previously recorded in N/A In County Recorder's Office.

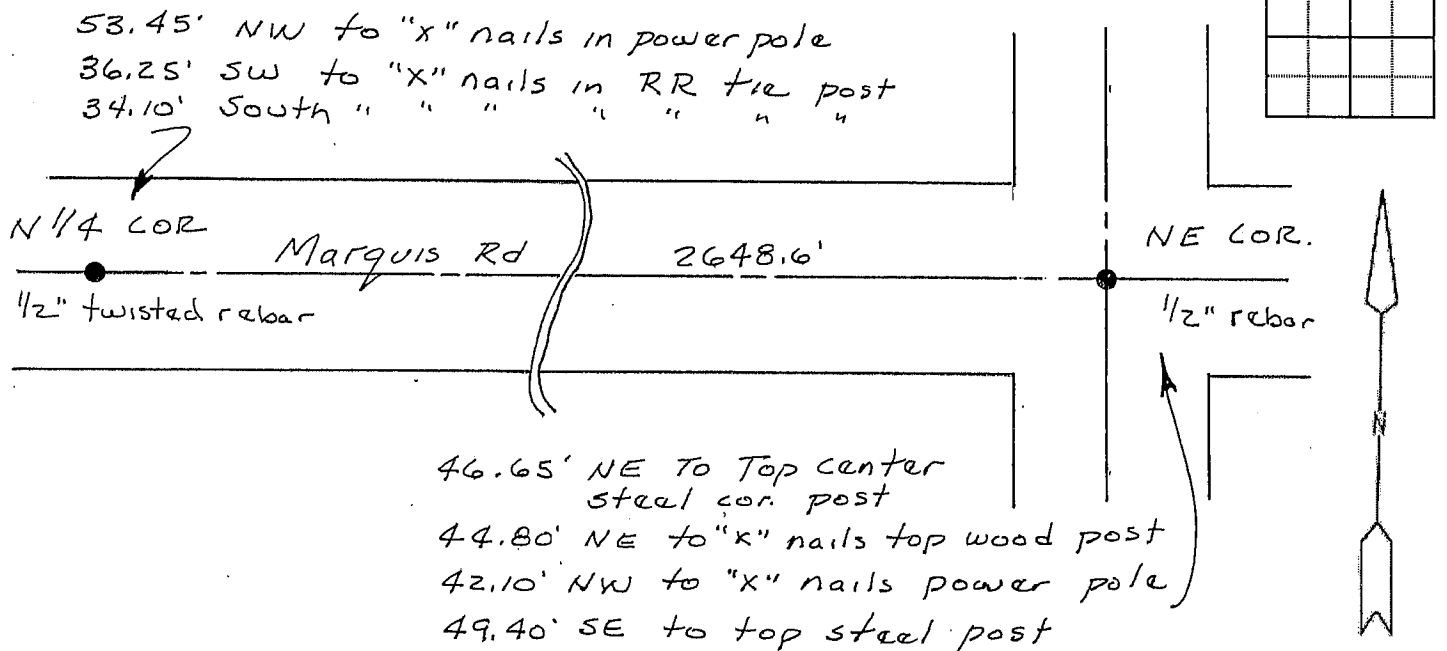
(Show reason for preparing this certificate, the evidence and detailed procedures used in establishing the corner positions and monumentation found or placed.)

Monument Description and Remarks:

Found $\frac{1}{2}$ " rebar in scenter of intersection
at NE cor. Found $\frac{1}{2}$ " twisted rebar at North $\frac{1}{4}$ corner.
In line with fence to South.

PLAN – VIEW

(Show a minimum of three reference ties to durable physical objects, relevant monuments and physical conditions that will enable recovery of the corner)



I hereby certify that the survey work was completed and this land surveying document was prepared by me or under my direct personal supervision and that I am a duly licensed land surveyor under the laws of the state of Iowa

Signature: Steve Burre
Name typed or printed

Date: 11/2/02 Reg. No. 9018

My license renewal date is December 31, 2002

SEAL

List Corners to be Indexed

Corners	Section	Twp	Range
NE COR.	3	90	12
N 1/4 COR.	3	90	12
SE COR.	34	91	12
S 1/4 COR.	34	91	12