

INDEX
MARGIN
PROOF
COMPARE

BLACK HAWK COUNTY IOWA:SS
Filed for record JUN 22, 2001 at
3:00 P.M. and recorded in Book _____
of _____ Page _____
Catherine J. Less Recorder
Fee 1-5.00/ RYKEN ENGINEERING
711 PARK AVE ACKLEY IA 50601

Harlan K. Schuck, L.S., Ryken Engineering, 711 Park Avenue, Ackley, IA. 50601-Ph. 641-847-3273

UNITED STATES PUBLIC LAND SURVEY CORNER CERTIFICATE OF

Land Survey Monuments situated in Section 2, Township 90, Range
12, of the Fifth Principal Meridian, BLACK HAWK County, Iowa,

Previously recorded in NOT APPLICABLE in County Recorder's Office

(Show reason for preparing this certificate, the evidence and detailed procedures used in establishing corner positions and monumentation found or placed.)

Monument Description and Remarks: Used E 1/4 & NE Cor. to tie in survey

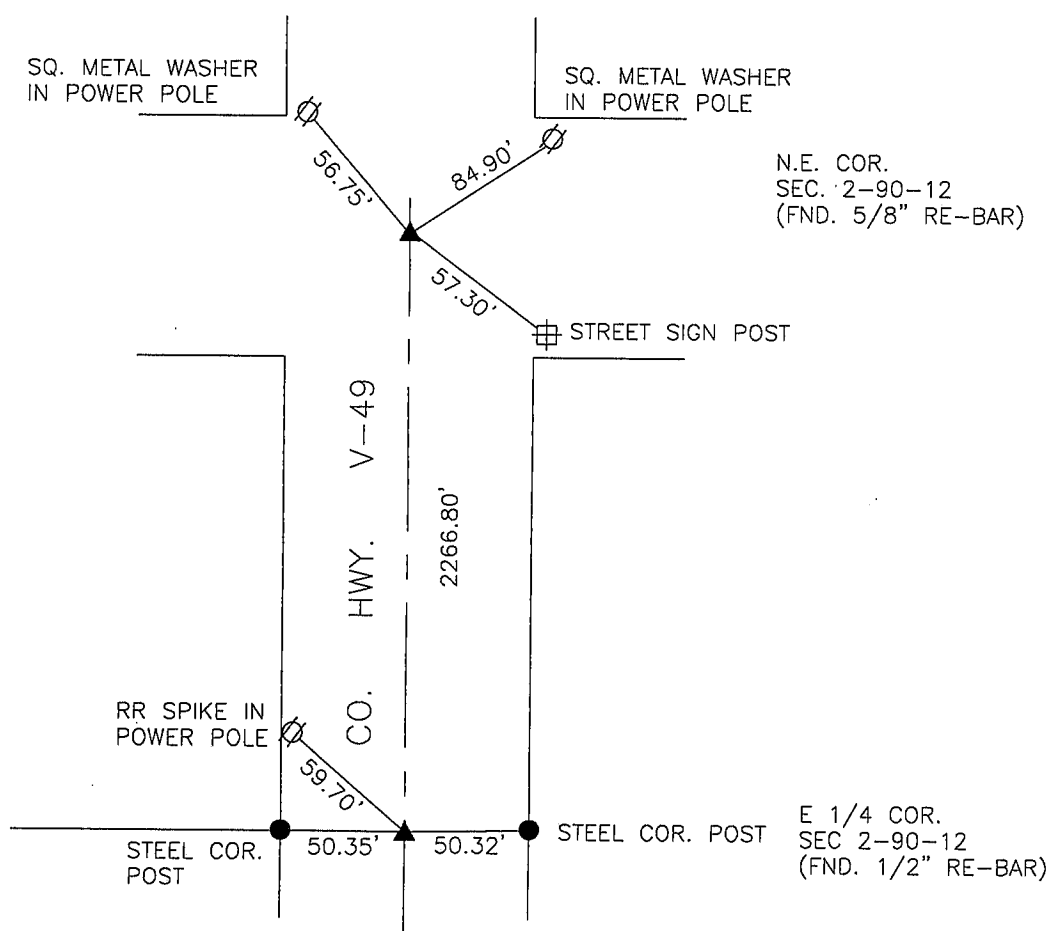
No certificates on file

NE Cor. - Found 5/8" re-bar centerline of intersection

E 1/4 Cor. - Found 1/2" re-bar center of road on line w/ fence west

PLAN VIEW

(Show a minimum of three reference ties to durable physical objects, relevant monuments, and physical conditions that will enable recovery of the corner.)



I hereby certify that this land surveying document was prepared and the related survey work was performed by me or under my direct personal supervision and that I am a duly licensed Land Surveyor under the laws of the State of Iowa.

Harlan K. Schuck

HARLAN K. SCHUCK
Date: 6-1-01 License number: 9962

My license renewal date is December 31, 2001

List Corners to be Indexed

Corners	Section	Twp	Range
NE	2	90	12
E. 1/4	2	90	12

