



Doc ID: 007561190001 Type: GEN  
Recorded: 02/22/2017 at 10:47:42 AM  
Fee Amt: \$7.00 Page 1 of 1  
Black Hawk County Iowa  
SANDIE L. SMITH RECORDER

File 2017-00014824

STEVE BUSSE P.O. BOX 241 508 ELM ST. ALLISON, IOWA 50602 319-267-2519

## UNITED STATES PUBLIC LAND SURVEY CORNER CERTIFICATE OF

LAND SURVEY MONUMENTS SITUATED IN SECTION NO. 35, TOWNSHIP NO. 91 NORTH, RANGE  
NO. 12 WEST OF THE FIFTH PRINCIPAL MERIDIAN, BREMER COUNTY, IOWA.  
PREVIOUSLY RECORDED IN 2007001449 (BLACK HAWK) FOR SE COR.

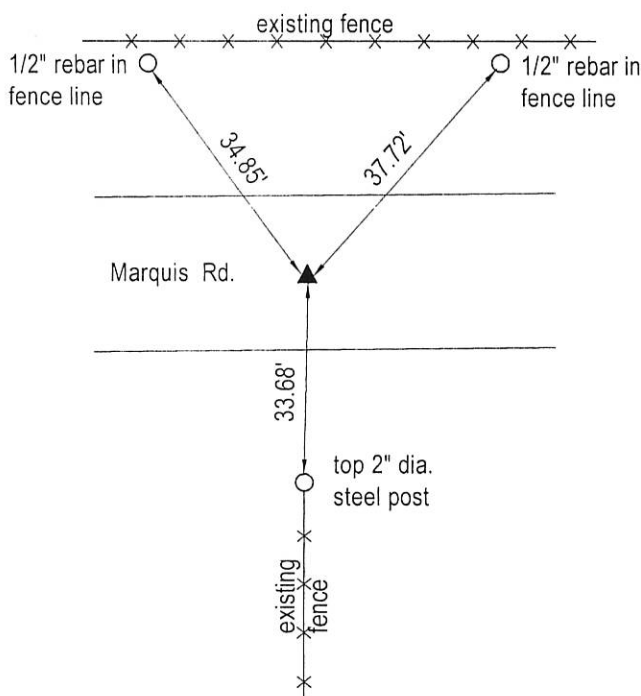
(SHOW REASON FOR PREPARING THIS CERTIFICATE, THE EVIDENCE AND DETAILED PROCEDURES USED IN ESTABLISHING THE  
CORNER POSITIONS AND MONUMENTATION FOUND OR PLACED.)

### MONUMENT DESCRIPTION AND REMARKS:

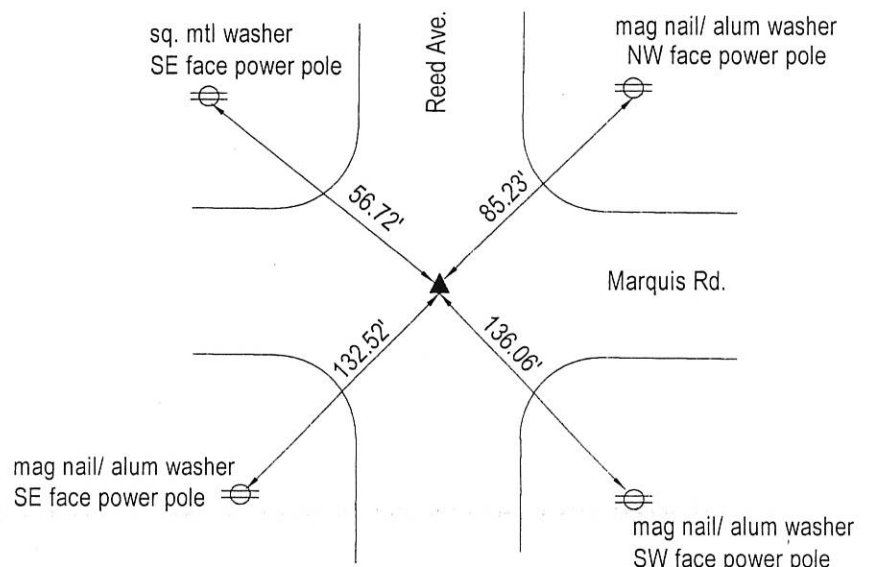
Found no certificate recorded for either corner in Bremer County. Found certificate for Southeast corner recorded in  
Black Hawk County. Searched area and found 5/8" rebar per ties from Black Hawk County certificate at Southeast  
corner. At South 1/4 corner found a pin with alum. cap in center of gravel road and on fence line to South. Did not find  
any of County ties remaining at corner. Could not read any number on alum cap. Used pin with cap for corner.

### PLAN VIEW

(SHOW A MINIMUM OF THREE REFERENCE TIES TO DURABLE PHYSICAL OBJECTS, RELEVANT MONUMENTS AND PHYSICAL  
CONDITIONS THAT WILL ENABLE RECOVERY OF THE CORNER.)



SOUTH 1/4 CORNER



SOUTHEAST CORNER



I HEREBY CERTIFY THAT THIS LAND SURVEYING DOCUMENT  
WAS PREPARED AND THE RELATED SURVEY WORK WAS  
PERFORMED BY ME OR UNDER MY DIRECT PERSONAL  
SUPERVISION AND THAT I AM A DULY LICENSED LAND  
SURVEYOR UNDER THE LAWS OF THE STATE OF IOWA.

*Steve Busse* 2/20/2017  
STEVE BUSSE DATE

LICENSE NUMBER 9018

MY LICENSE RENEWAL DATE IS DECEMBER 31, 2018

PAGES OR SHEETS COVERED BY THIS SEAL 1

G.P. = 2" GAS PIPE  
CONC MONU = CONCRETE MONUMENT W/ PIN & ALUM CAP  
"X NAILS" = CROSS NAILS IN WOOD POST  
OPT = PLASTIC TAG (O=ORANGE, Y=YELLOW)  
(00') RECORDED AS

#### LIST CORNERS TO BE INDEXED

CORNER	SECTION	TOWNSHIP	RANGE
SOUTHEAST COR.	35	91	12
SOUTH 1/4 COR.	35	91	12
NORTHEAST COR.	2	90	12
NORTH 1/4 COR.	2	90	12