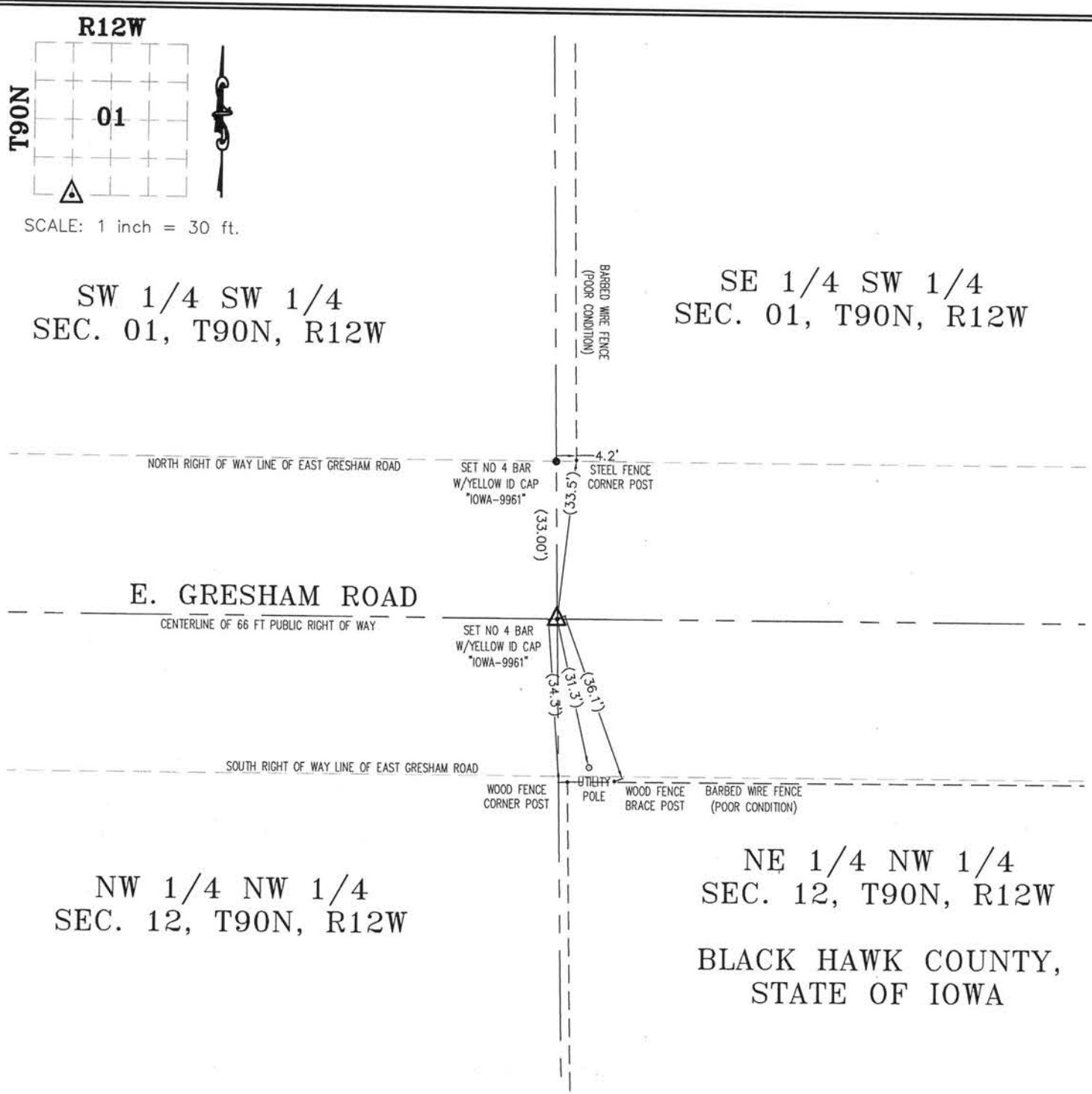


Kirk D. Eschliman, P.L.S. Iowa Lic. No. 9961, 819 Sycamore Street, Waterloo, Iowa 50703-4729 - Phone: 319-234-0509

UNITED STATES PUBLIC LAND SURVEY CORNER CERTIFICATE OF  
LAND SURVEY MONUMENTS SITUATED IN SECTION 01, TOWNSHIP 90 NORTH, RANGE 12 WEST, OF THE FIFTH PRINCIPAL  
MERIDIAN, BLACK HAWK COUNTY, IOWA.

(SHOW REASON FOR PREPARING THIS CERTIFICATE, THE EVIDENCE AND DETAILED PROCEDURES USED IN ESTABLISHING THE CORNER POSITIONS AND  
MONUMENTATION FOUND OR PLACED.)  
MONUMENT DESCRIPTION AND REMARKS:  
NO CURRENT RECORD OF MONUMENT SET, RECORDED IN BLACK HAWK COUNTY ENGINEERS OFFICE.  
SET NO. 4 REBAR WITH YELLOW ID CAP IN CENTERLINE OF GRANULAR SURFACE ROAD



I HEREBY CERTIFY THAT THIS LAND SURVEYING DOCUMENT  
WAS PREPARED AND THE RELATED SURVEY WORK WAS  
PERFORMED BY ME OR UNDER MY DIRECT PERSONAL  
SUPERVISION AND THAT I AM A DULY LICENSED LAND  
SURVEYOR UNDER THE LAWS OF THE STATE OF IOWA.  
*Kirk D. Eschliman* DATE: 05/25/2013  
KIRK D. ESCHLIMAN, P.L.S. IOWA LIC. NO. 9961  
MY LICENSE RENEWAL DATE IS DECEMBER 31, 2013  
PAGES OR SHEETS COVERED BY THIS SIGNATURE & SEAL: SHEET 1 OF 1



LIST OF CORNERS TO BE INDEXED:			
CORNER	SEC.	TWP	RANGE
SE COR. SW 1/4 SW 1/4	01	90	12

(7.00)