

UNITED STATES PUBLIC LAND SURVEY
CORNER CERTIFICATE OF

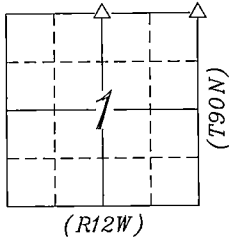
LAND SURVEY SITUATED IN:	Section 1, Township 90 North, Range 12 West, of the Fifth Principal Meridian, Black Hawk County, Iowa.
PREVIOUSLY RECORDED IN BOOK:	Book 304, Page 204
INSTRUMENT #:	2002-33386
FIELD WORK COMPLETED:	8/1/2019
SURVEY PREPARED BY:	CLAPSADDLE-GARBER ASSOCIATES, INC,
RESPOND TO: MARC HOODJER	16 EAST MAIN STREET, P.O. BOX 754, MARSHALLTOWN, IOWA 50158 PHONE 641-752-6701 MHOODJER@CGACONSULTANTS.COM



Doc ID: 009804670001 Type: GEN
Recorded: 04/17/2020 at 02:15:18 PM
Fee Amt: \$0.00 Page 1 of 1
Black Hawk County Iowa
SANDIE L. SMITH RECORDER

File 2020-00017992

THIS CERTIFICATE WAS PREPARED BECAUSE THE LISTED CORNERS WERE REMOVED DURING BLACK HAWK COUNTY PROJECT NUMBER FM-C007(152)-55-07. CORNERS WERE SET USING METHODS DESCRIBED BELOW.



PLAN-VIEW
NO SCALE

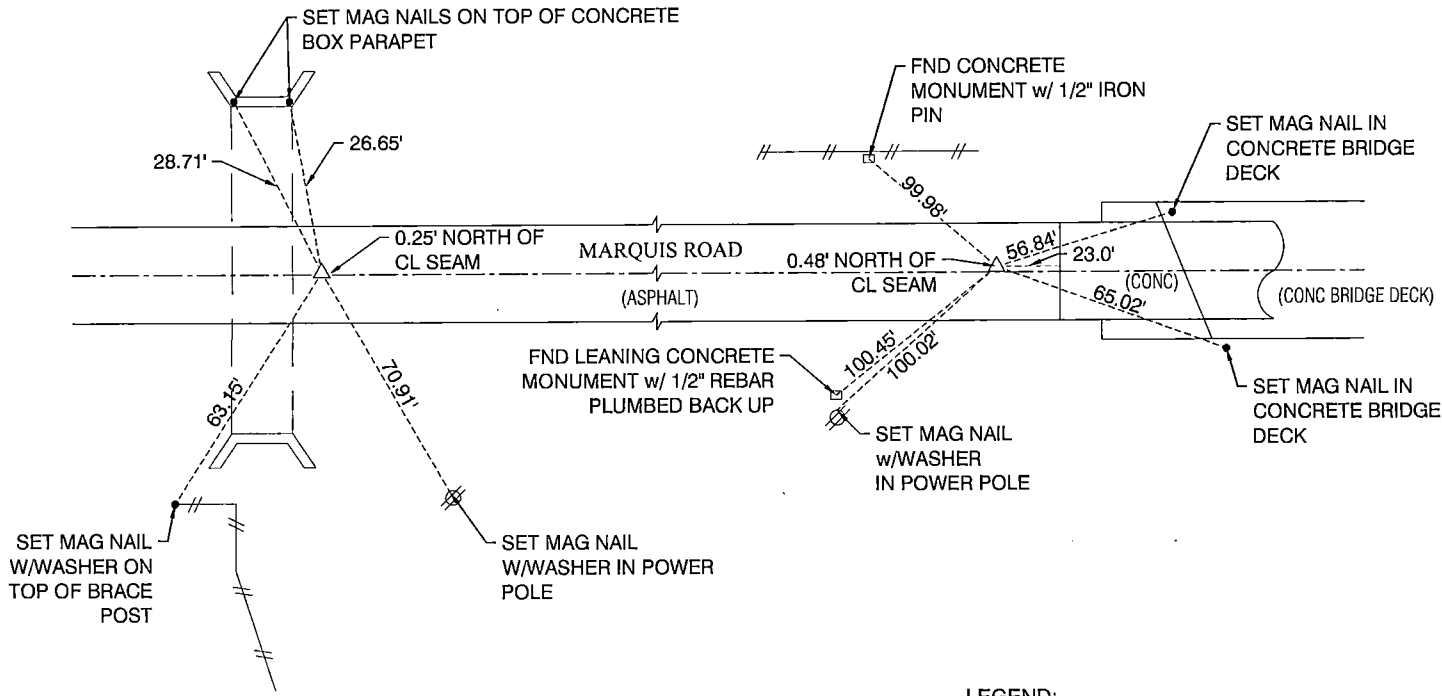


N 1/4 CORNER
SECTION 1-90-12

*FOUND 5/8" IRON PIN WAS REMOVED DURING CONSTRUCTION. PRIOR TO THE START OF CONSTRUCTION, CORNER WAS LOCATED AND RE-SET USING THE IOWA REGIONAL COORDINATE SYSTEM. SET MAG SPIKE AFTER CONSTRUCTION.

NE CORNER
SECTION 1-90-12

SET MAG SPIKE USING INFORMATION OBTAINED FROM CORNER CERTIFICATE RECORDED IN MISC BOOK BOOK 304, PAGE 204, BLACK HAWK, COUNTY, IOWA. CORNER WAS OBLITERATED FROM PREVIOUS CONSTRUCTION IN THE AREA



LEGEND:

- △ GOVERNMENT CORNER MONUMENT SET
- SET MAG NAIL
- EXISTING FENCE
- NAIL w/SM NAIL WITH SURVEY MARKER

	Clapsaddle-Garber Associates, Inc 5106 Nordic Drive Cedar Falls, Iowa 50613 Ph 319-266-0258 www.cgaconsultants.com	DRAWN CAQ	SHEET NO. 1	List Corners to be Indexed												
		DATE 8-5-2019	PROJECT NO. 78321.05													
	I hereby certify that this land surveying document was prepared and the related survey work was performed by me or under my direct personal supervision and that I am a duly Licensed Professional Land Surveyor under the laws of the State of Iowa.			<table><thead><tr><th>Corners</th><th>Section</th><th>Township</th><th>Range</th></tr></thead><tbody><tr><td>N 1/4 COR</td><td>1</td><td>90N</td><td>12W</td></tr><tr><td>NE COR</td><td>1</td><td>90N</td><td>12W</td></tr></tbody></table>	Corners	Section	Township	Range	N 1/4 COR	1	90N	12W	NE COR	1	90N	12W
	Corners	Section	Township		Range											
N 1/4 COR	1	90N	12W													
NE COR	1	90N	12W													
Marc C. Hoodjer, PLS Iowa License Number 22634 My License Renewal Date is December 31, 2020 Pages or sheets covered by this seal: THIS SHEET		12/16/19 date														