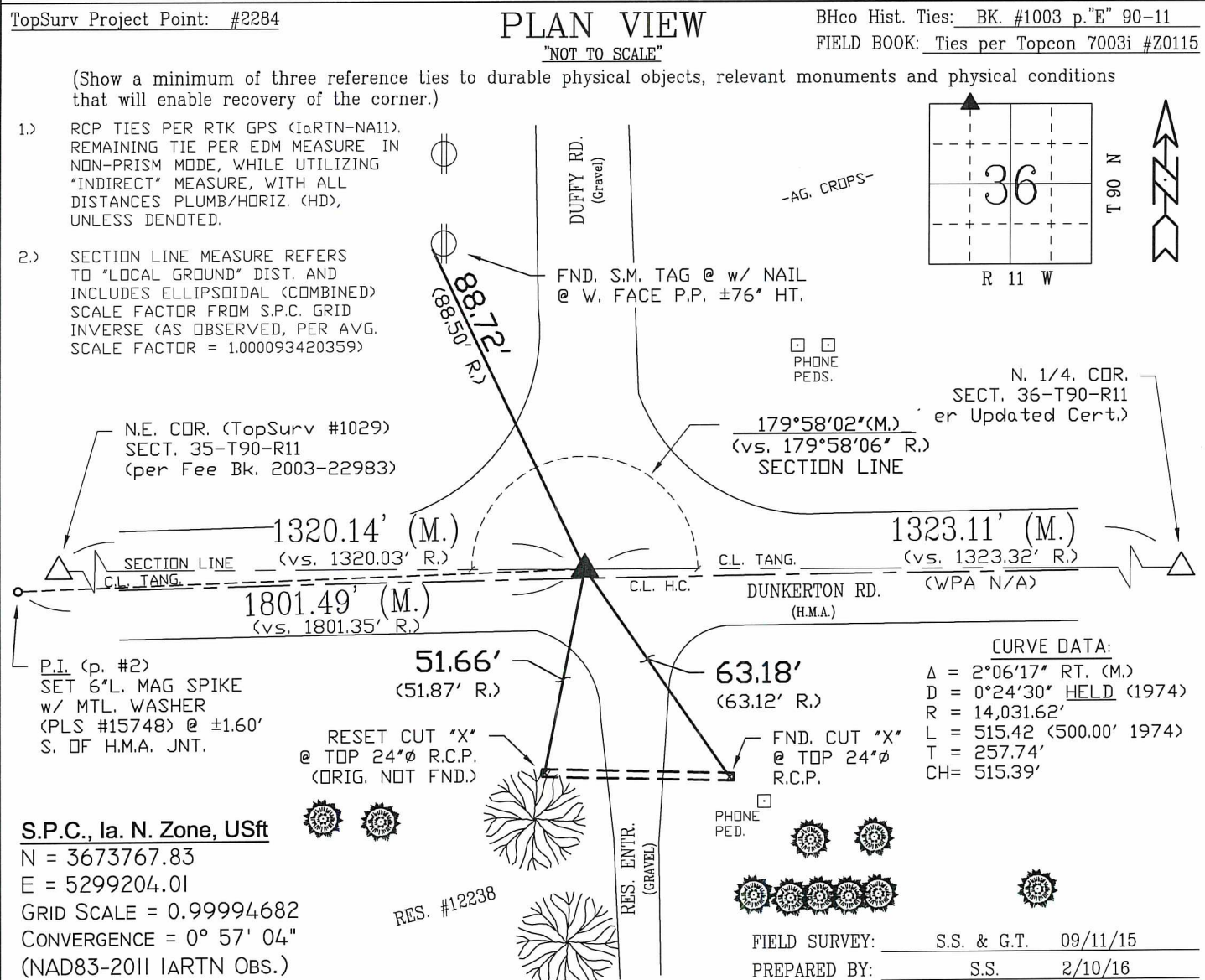
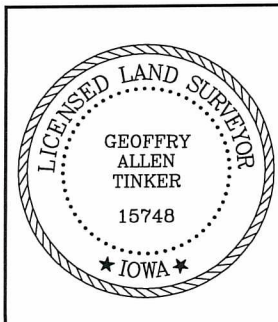


PREPARED BY: BLACK HAWK COUNTY ENGINEERS OFFICE  
316 E. FIFTH STREET, ROOM 211 WATERLOO, IOWA 50703  
PH.# (319) 833-3008  
FAX.# (319) 833-3139  
SLSI 9-94  
BHCO 03-09

UNITED STATES PUBLIC LAND SURVEY CORNER CERTIFICATE OF  
Land Survey Monuments situated in Section 36, Township 90 N,  
Range 11 W, of the Fifth Principal Meridian, BLACK HAWK County, Iowa.  
Previously recorded in Fee Book 2003-22984, in County Recorder's Office.  
(Show reason for preparing this certificate): The corner monument has been Replaced or Modified, per Ia. Code 355.11(1)(c)  
(Evidence and detailed procedures used in establishing the corner position(s) and monumentation found or placed.)  
Monument Description and Remarks: W. 1/16th COR., NORTH:  
CORNER RESET & TIES UPDATED PER PAVEMENT WIDENING AND H.M.A. RESURF. PROJECT  
LFM-1019--7X-07. PRIOR TO RESURF. PROJECT, FOUND LEAD PLUG PER CURRENT RECORD  
AND TEMP. REF. COR. LOCATION PER RTK GPS. SOUNDING REMAINED @ ± RTK REFERENCE  
LOCATION w/ NO FURTHER EXCAVATION. PLACED CHOKE STONE INTERLAYER AT +3" AND  
PVMT. RESURFACED w/ +6" (3" BASE, 1.5" INT. & 1.5" SURF.) H.M.A. PAVING. AFTER H.M.A.  
RESURFACE, RESET CORNER WITH 6"L. MAG SPIKE w/ MTL. WASHER (PLS #15748) LOCATED  
@ ±2.7' NORTH OF H.M.A. JOINT AND ALIGNED WITH C.L. SIDE ROAD TO NORTH. BHCO.  
RECORD TIES (BK. #1003 REF.) DATED OCT. 1974 CALLS FOR "SET IRON PIN AT 0.3' DEEP"  
AND RETIED, WITH "NO" REMAINING 1974 RECORD TIES FOUND. Page #1 of 3



**CERTIFICATION**



I hereby certify that this land surveying document was prepared and the related survey work was performed by me or under my direct personal supervision and that I am a duly licensed Land Surveyor under the laws of the State of Iowa.

*Geoffry Allen Tinker* 2/11/2016  
Geoffry Allen Tinker (date)  
License Number 15748  
My license renewal date is December 31, 2016  
Pages or sheets covered by this seal:  
This Land Corner Certificate Only, 3pp.

**LIST CORNERS TO BE INDEXED**

Corner	Section -	Township -	Range
N.E. Cor.	36	90 N	11 W
NW1/4-NW1/4			
S.E. Cor.	25	90 N	11 W
SW1/4-SW1/4			

**INDEX OF ABBREVIATIONS**

(M) = "Measured" Dimension  
(P) = "Platted" Dimension  
(R) = "Record" Dimension  
(C) = "Calculated" Dimension  
"IGS" = Iowa Geodetic Survey  
"WPA" = Works Progress Admin. Survey  
"W" = per George Miller Survey (BHco Surveyor 1858-1860)  
"B" = per John Ball Survey (BHco Surveyor 1866-1891)  
"N" = per Nathan Barber Survey (BHco Surveyor 1908-1931)

"NP" = Reflectorless EDM Meas.  
"MLM" = Indirect Measure  
"CM" = Concrete Monument  
"SM" = Survey Marker Spike/Tag  
"PK" = PK/MAG Nail Brand Style

PREPARED BY: BLACK HAWK COUNTY ENGINEERS OFFICE  
316 E. FIFTH STREET, ROOM 211 WATERLOO, IOWA 50703

PH.# (319) 833-3008  
FAX.# (319) 833-3139

SLSI 9-94  
BHCO 03-09

UNITED STATES PUBLIC LAND SURVEY CORNER CERTIFICATE OF  
Land Survey Monuments situated in Section 36, Township 90 N,  
Range 11 W, of the Fifth Principal Meridian, BLACK HAWK County, Iowa.  
Previously recorded in Misc. Book N/A, Page N/A, in County Recorder's Office.

(Evidence and detailed procedures used in establishing the corner position(s) and monumentation found or placed.)

Monument Description and Remarks: **CONTINUED: PAGE #2 of 3**

REFERENCE TIES TO P.I. WEST OF SAID SECTION CORNER. P.I. RESET & TIES UPDATED  
PER PAVEMENT WIDENING AND H.M.A. RESURF. PROJECT LFM-1019--7X-07. PRIOR TO  
RESURF. PROJECT, FOUND CUT "X" IN P.C.C. PAVING AND TEMP. REF. LOCATION PER RTK  
GPS. AFTER FULL DEPTH REMOVAL, PLACED +6" SUBBASE AND FULL DEPTH PVMT.  
w/+6" (3" BASE, 1.5" INT. & 1.5" SURF.) H.M.A. PAVING. AFTER H.M.A. PAVING, RESET P.I.  
REFERENCE WITH 6"L. MAG SPIKE w/ MTL. WASHER (PLS #15748) LOCATED @ ±1.6' SOUTH  
OF H.M.A. JOINT. P.I. REFERENCE IS INCLUDED WITH CORNER TIE FOR PUBLIC RECORD OF  
ROADWAY GEOMETRY.

TopSurv Project Point: #2283

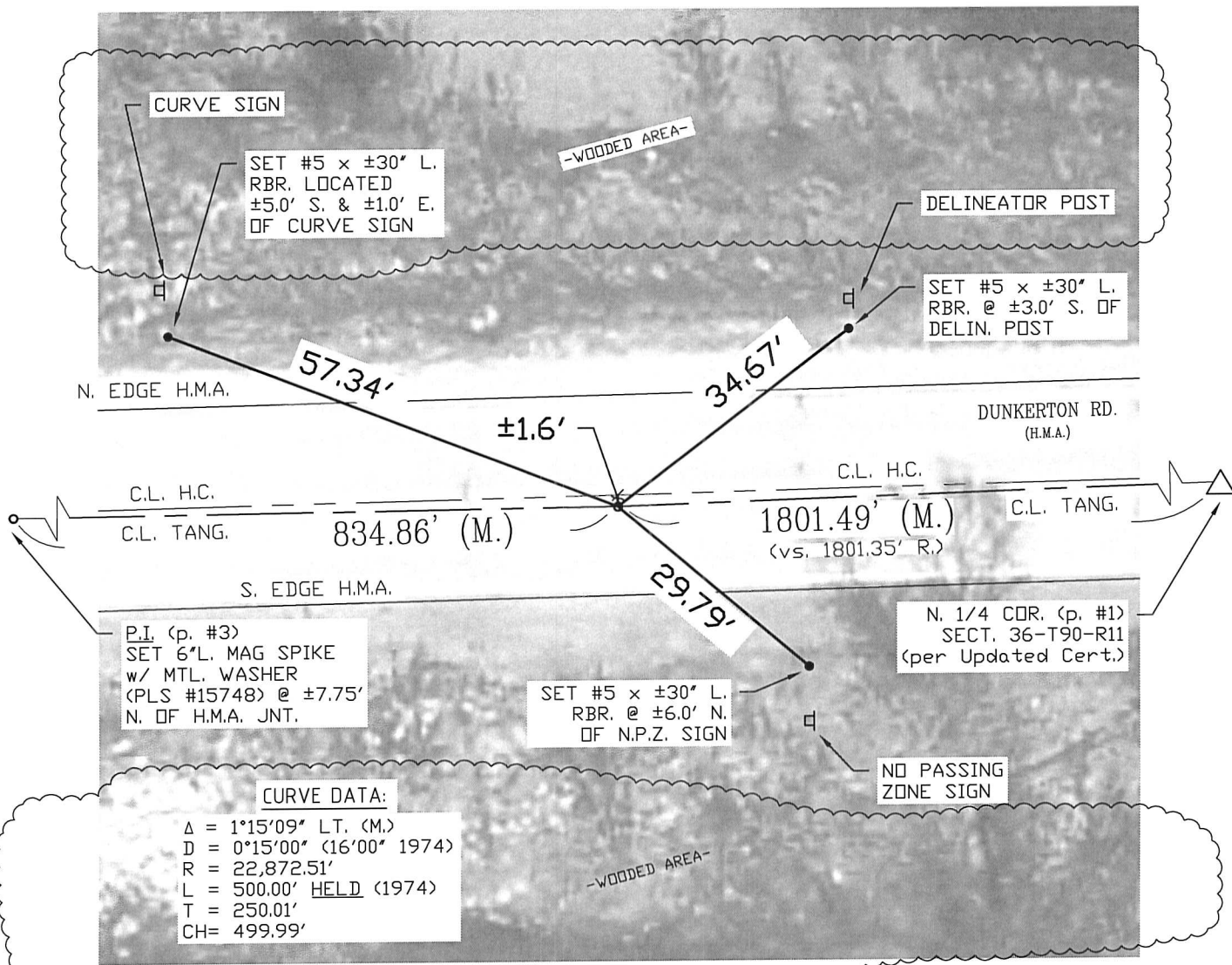
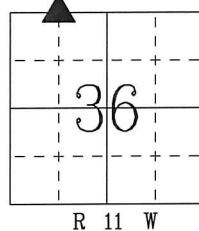
FIELD SURVEY: S.S. & G.T. 9/11/15  
PREPARED BY: S.S. & G.T. 2/10/16

### PLAN VIEW

"NOT TO SCALE"

(Show a minimum of three reference ties to durable physical objects, relevant monuments and physical conditions that will enable recovery of the corner.)

- 1.) TIES PER RTK GPS (IaRTN-NA11)  
MEAS., WITH ALL DISTANCES  
PLUMB/HORIZ. (HD), UNLESS  
DENOTED.
- 2.) SECTION LINE MEASURE REFERS  
TO "LOCAL GROUND" DIST. AND  
INCLUDES ELLIPSOIDAL (COMBINED)  
SCALE FACTOR FROM S.P.C. GRID  
INVERSE (AS OBSERVED, PER AVG.  
SCALE FACTOR = 1.000093420359)



PREPARED BY: BLACK HAWK COUNTY ENGINEERS OFFICE  
316 E. FIFTH STREET, ROOM 211 WATERLOO, IOWA 50703

PH.# (319) 833-3008  
FAX.# (319) 833-3139

SLSI 9-94  
BHCO 03-09

UNITED STATES PUBLIC LAND SURVEY CORNER CERTIFICATE OF  
Land Survey Monuments situated in Section 36, Township 90 N,  
Range 11 W, of the Fifth Principal Meridian, BLACK HAWK County, Iowa.  
Previously recorded in Misc. Book N/A, Page N/A, in County Recorder's Office.  
(Evidence and detailed procedures used in establishing the corner position(s) and monumentation found or placed.)

Monument Description and Remarks: **CONTINUED: PAGE #3 of 3**  
REFERENCE TIES TO P.I. WEST OF SAID SECTION CORNER, LOCATED EAST OF WAPSI.  
RIVER BRIDGE. P.I. RESET & TIES ESTABLISHED PER PAVEMENT WIDENING AND H.M.A.  
RESURF. PROJECT LFM-1019--7X-07. PRIOR TO RESURF. PROJECT, FOUND LEAD PLUG IN  
P.C.C. PAVING AND TEMP. REF. LOCATION PER RTK GPS. AFTER FULL DEPTH REMOVAL,  
PLACED +6" SUBBASE AND PVMT. RESURFACED w/ +6" (3" BASE, 1.5" INT. & 1.5" SURF.)  
H.M.A. PAVING. AFTER H.M.A. RESURFACE, RESET P.I. REFERENCE WITH 6"L. MAG SPIKE w/  
MTL. WASHER (PLS #15748) LOCATED @ ±7.8' NORTH OF H.M.A. JOINT. P.I. REFERENCE IS  
INCLUDED WITH CORNER TIE FOR PUBLIC RECORD OF ROADWAY GEOMETRY.

TopSurv Project Point: #2282

FIELD SURVEY: S.S. & G.T. 9/11/15  
PREPARED BY: S.S. & G.T. 2/10/16

PLAN VIEW  
"NOT TO SCALE"

(Show a minimum of three reference ties to durable physical objects, relevant monuments and physical conditions that will enable recovery of the corner.)

- 1.) TIES PER RTK GPS (IaRTN-NA11)  
MEAS., WITH ALL DISTANCES  
PLUMB/HORIZ. (HD), UNLESS  
DENOTED.
- 2.) SECTION LINE MEASURE REFERS  
TO "LOCAL GROUND" DIST. AND  
INCLUDES ELLIPSOIDAL (COMBINED)  
SCALE FACTOR FROM S.P.C. GRID  
INVERSE (AS OBSERVED, PER AVG.  
SCALE FACTOR = 1.000093420359)

