



Doc ID: 003796050001 Type: GEN
Recorded: 06/05/2009 at 10:44:51 AM
Fee Amt: \$7.00 Page 1 of 1
Instr# 200800029817
Black Hawk County Iowa
JUDITH A MCCARTHY RECORDER
Book 1080 Page 49638 - 49638

File **2009-00023502**

WAYNE CLAASSEN ENGINEERING AND SURVEYING, INC.
P.O. BOX 898 WATERLOO, IOWA 50704-0898

PHONE: (VOICE) 319-235-6294
(FAX) 319-235-0028

UNITED STATES PUBLIC LAND SURVEY CORNER CERTIFICATE

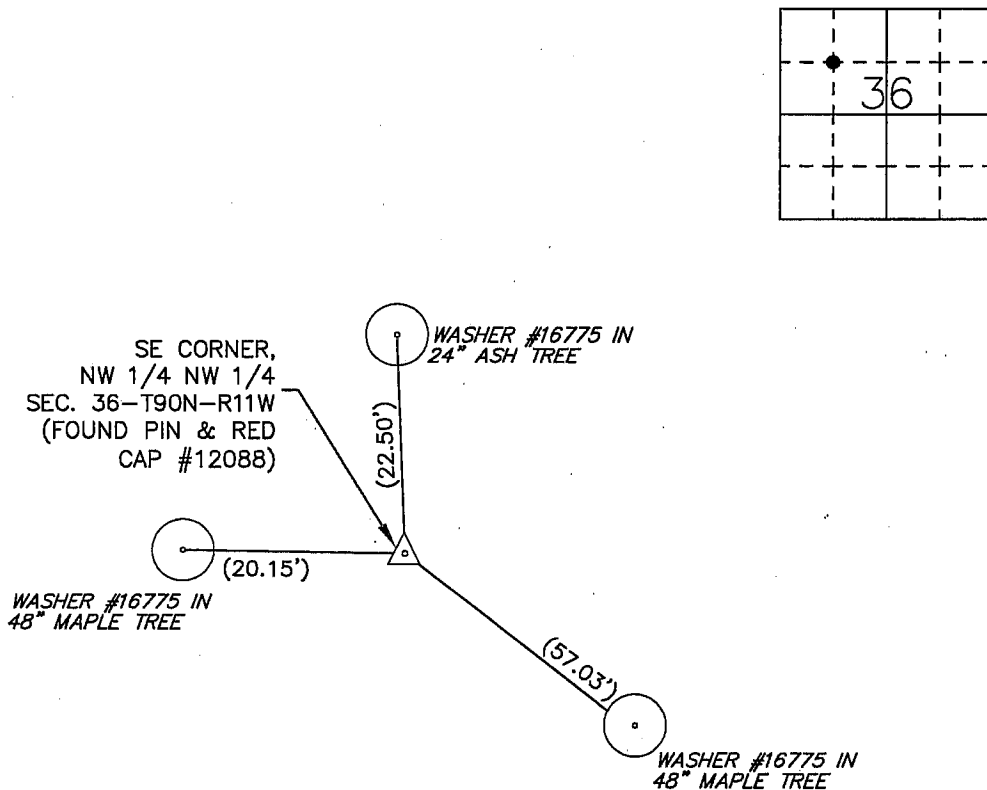
Land Survey Monuments situated in Section 36, Township 90 North, Range 11 West, of the Fifth Principal Meridian, Black Hawk County, Iowa.

Previously recorded in _____ in County Recorder's Office.
(book, page, document number, etc.)

Monument Description and Remarks

No certificate on file. Found pin and red cap #12088 at corner as per Plat of Survey Document No. 2007-03032 in the Black Hawk County Recorder's Office.

PLAN - VIEW



BK 628, PG. 69

I hereby certify that this land surveying document was prepared and the related survey work was performed by me or under my direct personal supervision and that I am a duly Licensed Land Surveyor under the laws of the State of Iowa.

Signature: _____

David L. Scheil, L.S.

Date: JUNE 02, 2009 Lic. No. 16775

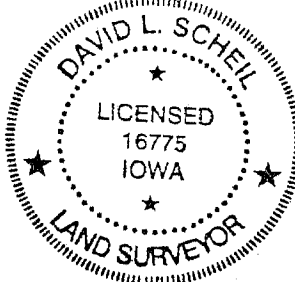
Pages or Sheets Covered by this Seal: THIS SHEET ONLY.

My license renewal date is December 31, 2010

SEAL

List Corners to be Indexed

| Corners | Section | Twp | Range |
|-----------------------------|---------|------|-------|
| SE CORNER, NW 1/4 NW 1/4 | 36 | 90 N | 11 W |



(70°)