

INDEX

BLACK HAWK COUNTY, IOWA:ss

FEE BOOK # 2003 22983

PROOF

FILED FOR RECORD

FEB 10

2003

AT 4:00P. M.

FEE N/C

COMPARED

BLACK HAWK COUNTY RECORDER

BLACK HAWK COUNTY ENGINEER

PREPARED BY:

BLACK HAWK COUNTY ENGINEERS OFFICE
316 E. FIFTH STREET, ROOM 211 WATERLOO, IOWA 50703PH.# (319) 833-3008
FAX.# (319) 833-3139SLSI 9-94
CERT 12-96

UNITED STATES PUBLIC LAND SURVEY CORNER CERTIFICATE OF
Land Survey Monuments situated in Section 36, Township 90 N,
Range 11 W, of the Fifth Principal Meridian, BLACK HAWK County, Iowa.
Previously recorded in Misc. Book N/A, Page N/A, in County Recorder's Office.

(Show reason for preparing this certificate, the evidence and detailed procedures used in establishing the corner positions and monumentation found or placed.)

Monument Description and Remarks: N.W. CORNER SECTION 36-90-11
FOUND 1/2" RBR. w/ ORANGE CAP #6505 IN W. F.S. OF RD. N. @ 18" DEEP,
PER RECORD ROAD GEOMETRICS. EST. STEEL "T" POST W/ ORANGE S.M.
SLEEVE TO SOUTH.
CORNER UTILIZED FOR "RECORD OF SURVEY" OF SAID SECTION 36.

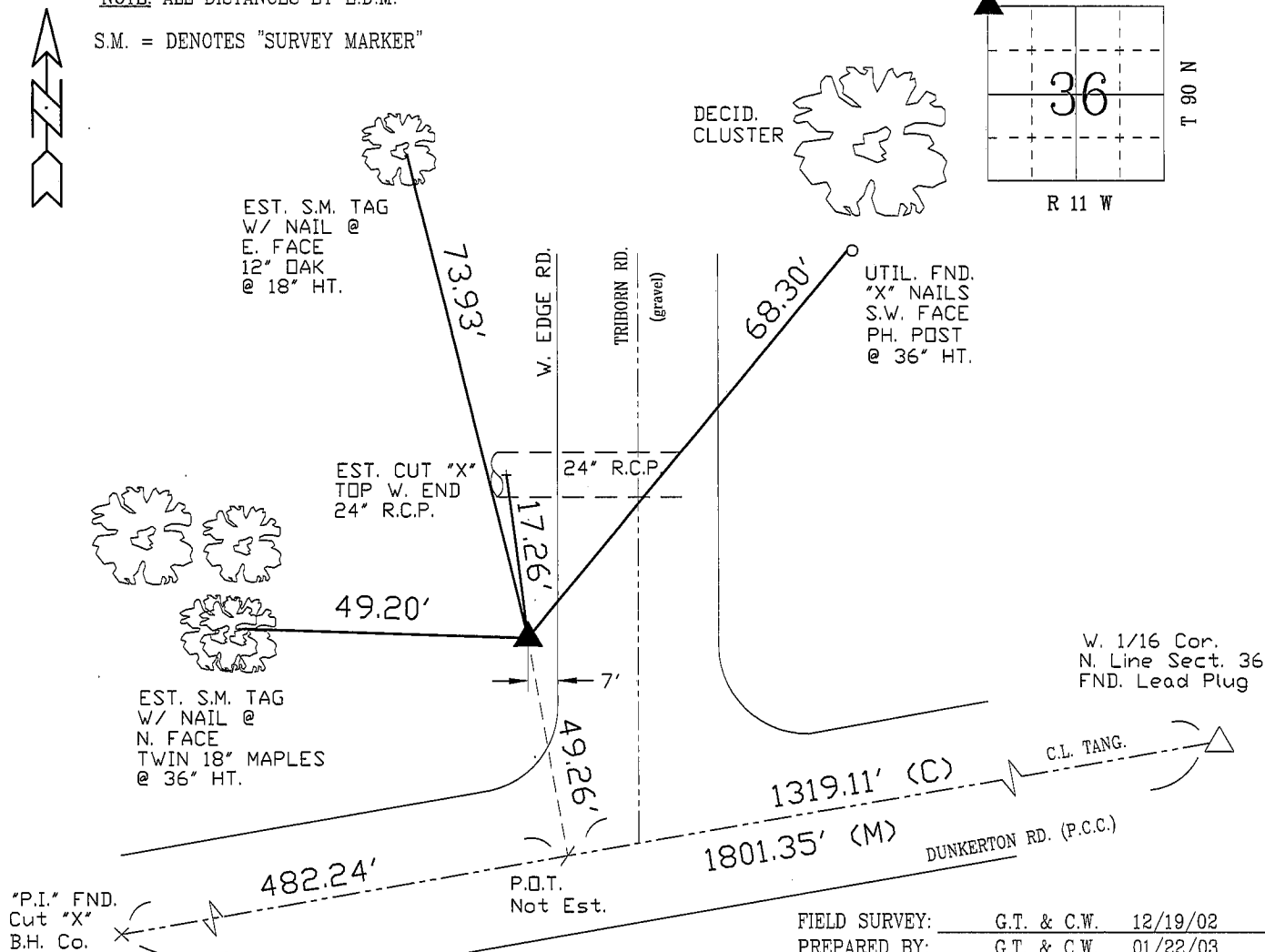
PLAN - VIEW

(Show a minimum of three reference ties to durable physical objects, relevant monuments and physical conditions that will enable recovery of the corner.)

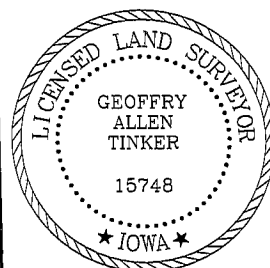
NOTE: ALL DISTANCES BY E.D.M.

NOT TO SCALE

S.M. = DENOTES "SURVEY MARKER"



CERTIFICATION



I hereby certify that this land surveying document was prepared and the related survey work was performed by me or under my direct personal supervision and that I am a duly licensed Land Surveyor under the laws of the State of Iowa.

Geoffrey Allen Tinker 02/10/03
Geoffrey Allen Tinker (date)

License Number 15748My license renewal date is December 31, 2004

Pages or sheets covered by this seal:

This Land Corner Certificate Only.

LIST CORNERS TO BE INDEXED

Corner	Section	Township	Range
N.W. COR.	36	90 N	11 W
N.E. COR.	35	90 N	11 W
S.W. COR.	25	90 N	11 W
S.E. COR.	26	90 N	11 W