

SLSI 9-94
BHCO 03-09

(Show reason for preparing this certificate): There is No Certificate for the corner on file with County Recorder, per Ia. Code 355.11(1)(a).

(Evidence and detailed procedures used in establishing the corner position(s) and monumentation found or placed.)

Monument Description and Remarks: N.E. COR.

NO CURRENT LAND CORNER CERT. ON RECORD, WITH RECORD TIES PER BHCO, W.P.A. HIST. TIES DATED 9-12-39 (NO TIES REMAINED) AND HIST. CO. ENG. TIES DATED OCT. 1974 (ONE REMAINING, TO N.E.). FND. 3/8" RBR. @ ±0.85' S. OF C.L. JOINT IN PCC PAVING. CORNER UTILIZED FOR R.O.W. SURVEY REQUEST BY CO. ENGINEER FOR DITCH CLEANING REF. ALONG W. SIDE OF BH.-BUCH. ROAD TO NORTH. NOTE THAT EAST LINE OF S.E. 1/4 SECTION 25 (TO NORTH) DOES "NOT" FOLLOW THE PHYSICAL CENTERLINE OF ROAD, AS OBSERVED. PHYSICAL R.O.W. (DATED FENCES & UTILITIES) WERE LOCATED FOR REF. TO OCCUPIED R.O.W. vs. RD. #573 DEDICATION @ THREE RODS WIDE (49.5') ALONG EAST LINES OF SAID SECT. 25, PER CO.ENG. PROJECT DRAWING (FOR FILE). CORNER UPDATED & FILED FOR RECORD.

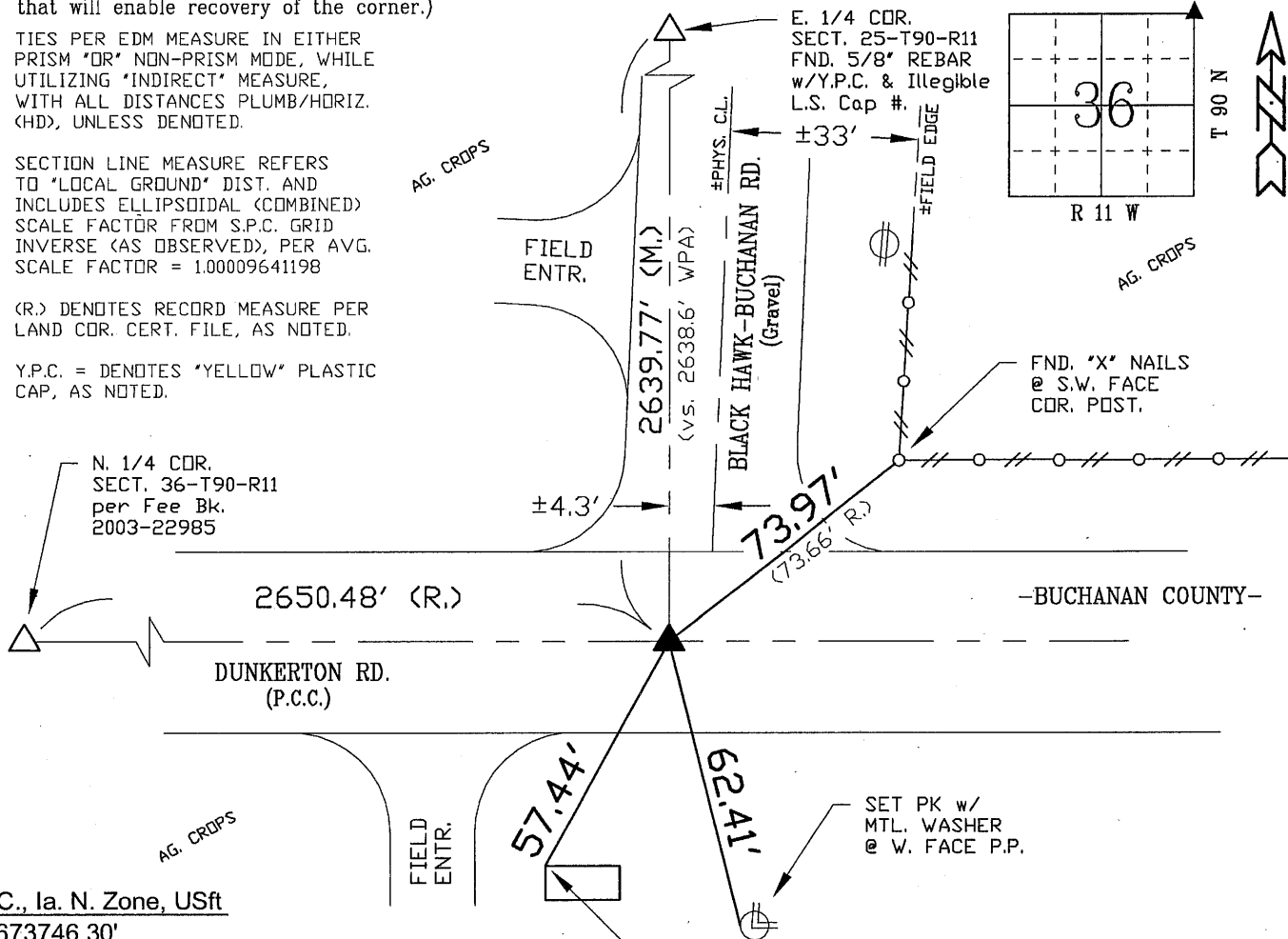
BHco Hist. Ties: BK. #1003 p.36 90-11

"NOT TO SCALE"

FIELD BOOK: Ties per Topcon 7003i #Z0115

(Show a minimum of three reference ties to durable physical objects, relevant monuments and physical conditions that will enable recovery of the corner.)

- 1.) TIES PER EDM MEASURE IN EITHER PRISM 'OR' NON-PRISM MODE, WHILE UTILIZING 'INDIRECT' MEASURE, WITH ALL DISTANCES PLUMB/HORIZ. (HD), UNLESS DENOTED.
- 2.) SECTION LINE MEASURE REFERS TO 'LOCAL GROUND' DIST. AND INCLUDES ELLIPSIDAL (COMBINED) SCALE FACTOR FROM S.P.C. GRID INVERSE (AS OBSERVED), PER AVG. SCALE FACTOR = 1.00009641198
- 3.) (R.) DENOTES RECORD MEASURE PER LAND COR. CERT. FILE, AS NOTED.
- 4.) Y.P.C. = DENOTES "YELLOW" PLASTIC CAP. AS NOTED.



S.P.C., Ia. N. Zone, USft

N=3673746.30'

E=5303177.20'

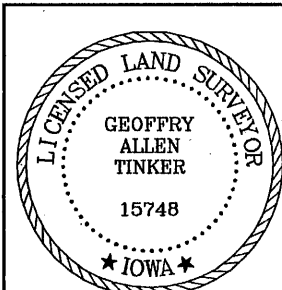
(NAD83-2007 "IaRTN", RTK Obs.)

TOP N.W. COR BASE
(PAD) OF ELECT.
UTIL. BOX (P.C.C.).

FIELD SURVEY: S.S. 01/09/12

PREPARED BY: S.S. & G.T. 1/20/12

LIST CORNERS TO BE INDEXED



I hereby certify that this land surveying document was prepared and the related survey work was performed by me or under my direct personal supervision and that I am a duly licensed Land Surveyor under the laws of the State of Iowa.

Geoffrey Allen Tinker 01/20/2012
(date)

License Number 15748

My license renewal date is December 31, 2012

Pages or sheets covered by this seal:

This Land Corner Certificate Only.

<u>Corner</u>	<u>Section</u> -	<u>Township</u> -	<u>Range</u>
N.E. Cor.	36	90 N	11 W
S.E. Cor.	25	90 N	11 W

INDEX OF ABBREVIATIONS

(M) = "Measured" Dimension "NP" = Reflectorless EDM Meas.
(P) = "Platted" Dimension "MLM" = Indirect Measure
(R) = "Record" Dimension "CM" = Concrete Monument
(C) = "Calculated" Dimension "SM" = Survey Marker Spike/Tag
"IGS" = Iowa Geodetic Survey "PK" = PK/MAG Nail Brand Style
"WPA" = Works Progress Admin. Survey
"Ø" = per George Miller Survey (BHCo Surveyor 1858-1860)
"Ø" = per John Ball Survey (BHCo Surveyor 1866-1891)
"Ø" = per Nathan Barber Survey (BHCo Surveyor 1908-1931)