



Doc ID: 006963910001 Type: GEN
Recorded: 02/11/2016 at 04:22:09 PM
Fee Amt: \$0.00 Page 1 of 1
Black Hawk County Iowa
SANDIE L. SMITH RECORDER

File 2016-00013984

PREPARED BY: BLACK HAWK COUNTY ENGINEERS OFFICE
316 E. FIFTH STREET, ROOM 211 WATERLOO, IOWA 50703

PH.# (319) 833-3008
FAX.# (319) 833-3139

SLSI 9-94
BHCO 03-09

UNITED STATES PUBLIC LAND SURVEY CORNER CERTIFICATE OF
Land Survey Monuments situated in Section 36, Township 90 N,
Range 11 W, of the Fifth Principal Meridian, BLACK HAWK County, Iowa.
Previously recorded in Fee Book 2003-22985, in County Recorder's Office.

(Show reason for preparing this certificate): The corner monument has been Replaced or Modified, per Ia. Code 355.11(1)(c)

(Evidence and detailed procedures used in establishing the corner position(s) and monumentation found or placed.)

Monument Description and Remarks: N. 1/4 CORNER:

CORNER RESET & TIES UPDATED PER PAVEMENT WIDENING AND H.M.A. RESURF. PROJECT
LFM-1019--7X-07. PRIOR TO RESURF. PROJECT, FOUND LEAD PLUG PER CURRENT RECORD
AND TEMP. REF. COR. LOCATION PER RTK GPS. SOUNDING REMAINED @ ± RTK REFERENCE
LOCATION w/ NO FURTHER EXCAVATION. PLACED CHOK STONE INTERLAYER AT +3" AND
PVMT. RESURFACED w/ +6" (3" BASE, 1.5" INT. & 1.5" SURF.) H.M.A. PAVING. AFTER H.M.A.
RESURFACE, RESET CORNER WITH 6"L. MAG SPIKE w/ MTL. WASHER (PLS #15748) LOCATED
@ ±0.10' NORTH OF H.M.A. JOINT AND ALIGNED (±) WITH C.L. SIDEROAD TO SOUTH. BHCO.
RECORD TIES (BK. #1003 REF.) DATED OCT. 1974 CALLS FOR "IRON PIN 0.3' DEEP" AND
RETIED, WITH "NO" REMAINING 1974 RECORD TIES FOUND.

TopSurv Project Point: #1030

PLAN VIEW

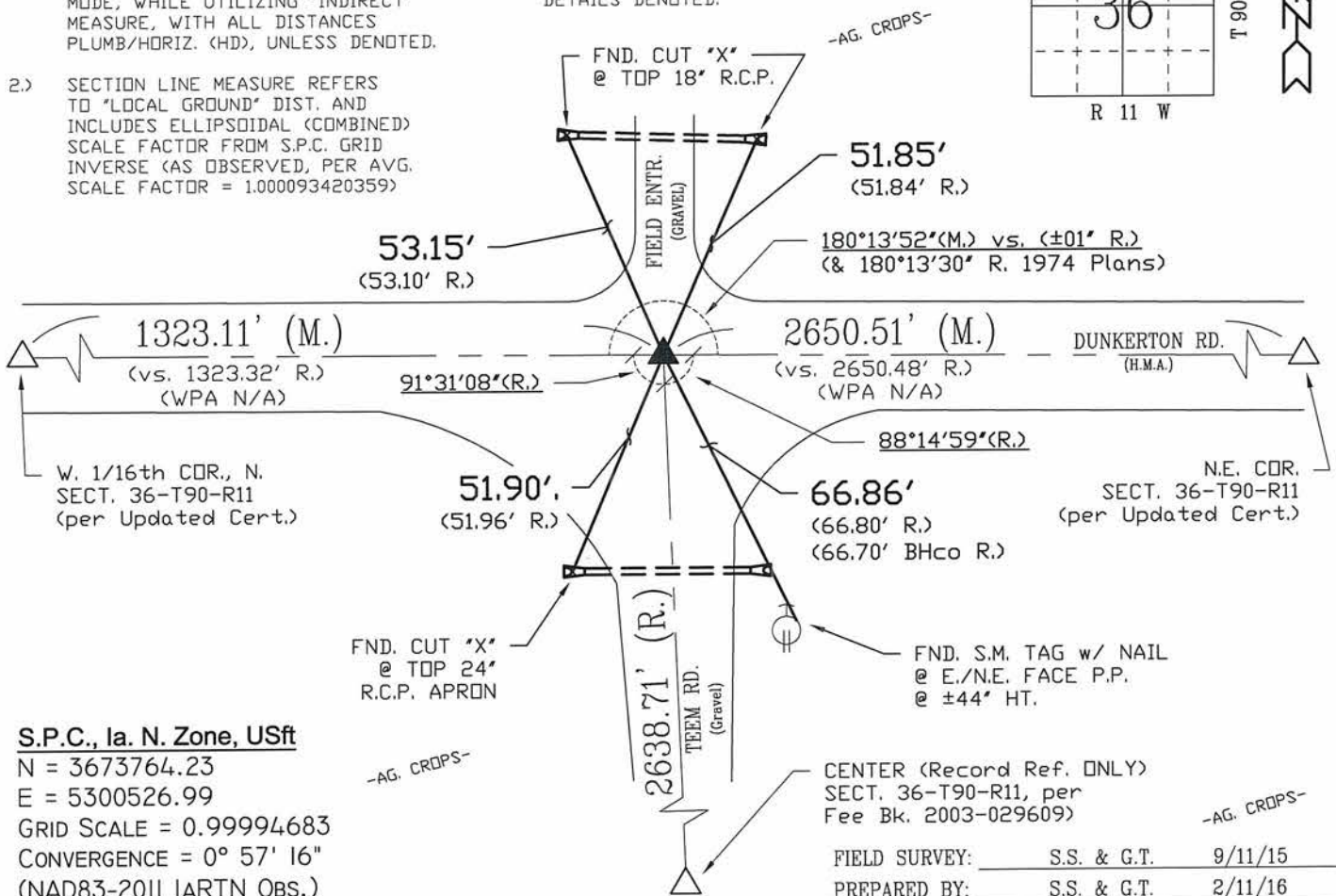
"NOT TO SCALE"

BHco Hist. Ties: BK. #1003 p.36 90-11

FIELD BOOK: Ties per Topcon 7003i #Z0115

(Show a minimum of three reference ties to durable physical objects, relevant monuments and physical conditions that will enable recovery of the corner.)

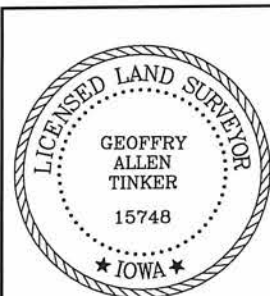
- 1.) RCP TIES PER RTK GPS (IARTN-NA11). REMAINING TIES PER EDM MEASURE IN EITHER PRISM "OR" NON-PRISM MODE, WHILE UTILIZING "INDIRECT" MEASURE, WITH ALL DISTANCES PLUMB/HORIZ. (HD), UNLESS DENOTED.
- 2.) SECTION LINE MEASURE REFERS TO "LOCAL GROUND" DIST. AND INCLUDES ELLIPSOIDAL (COMBINED) SCALE FACTOR FROM S.P.C. GRID INVERSE (AS OBSERVED, PER AVG. SCALE FACTOR = 1.000093420359)
- 3.) CORNER TIES ALSO UPDATED IN MARCH 1989 PER CLAASSEN ENG. AS NOTED IN BK. #1003, YET NO CORNER DETAILS DENOTED.



S.P.C., Ia. N. Zone, USft

N = 3673764.23
E = 5300526.99
GRID SCALE = 0.99994683
CONVERGENCE = 0° 57' 16"
(NAD83-2011 IARTN OBS.)

CERTIFICATION



I hereby certify that this land surveying document was prepared and the related survey work was performed by me or under my direct personal supervision and that I am a duly licensed Land Surveyor under the laws of the State of Iowa.

Geoffrey Allen Tinker 2/11/2016
Geoffrey Allen Tinker (date)

License Number 15748

My license renewal date is December 31, 2016

Pages or sheets covered by this seal:

This Land Corner Certificate Only.

LIST CORNERS TO BE INDEXED

Corner	Section -	Township -	Range
N. 1/4 Cor.	36	90 N	11 W
S. 1/4 Cor.	25	90 N	11 W

INDEX OF ABBREVIATIONS

(M) = "Measured" Dimension
(P) = "Platted" Dimension
(R) = "Record" Dimension
(C) = "Calculated" Dimension
(GS) = Iowa Geodetic Survey
(WPA) = Works Progress Admin. Survey
(G) = per George Miller Survey (BHco Surveyor 1858-1860)
(B) = per John Ball Survey (BHco Surveyor 1866-1891)
(N) = per Nathan Barber Survey (BHco Surveyor 1908-1931)
(NP) = Reflectorless EDM Meas.
(MLM) = Indirect Measure
(CM) = Concrete Monument
(SM) = Survey Marker Spike/Tag
(PK) = PK/MAG Nail Brand Style