



Doc ID: 003796060001 Type: GEN
Recorded: 06/05/2009 at 10:45:09 AM
Fee Amt: \$7.00 Page 1 of 1
Instr# 200800029818
Black Hawk County Iowa
JUDITH A MCCARTHY RECORDER
Book 1080 Page 49639 - 49639

File **2009-00023503**

ENV WAYNE CLAASSEN ENGINEERING AND SURVEYING, INC.
P.O. BOX 898 WATERLOO, IOWA 50704-0898

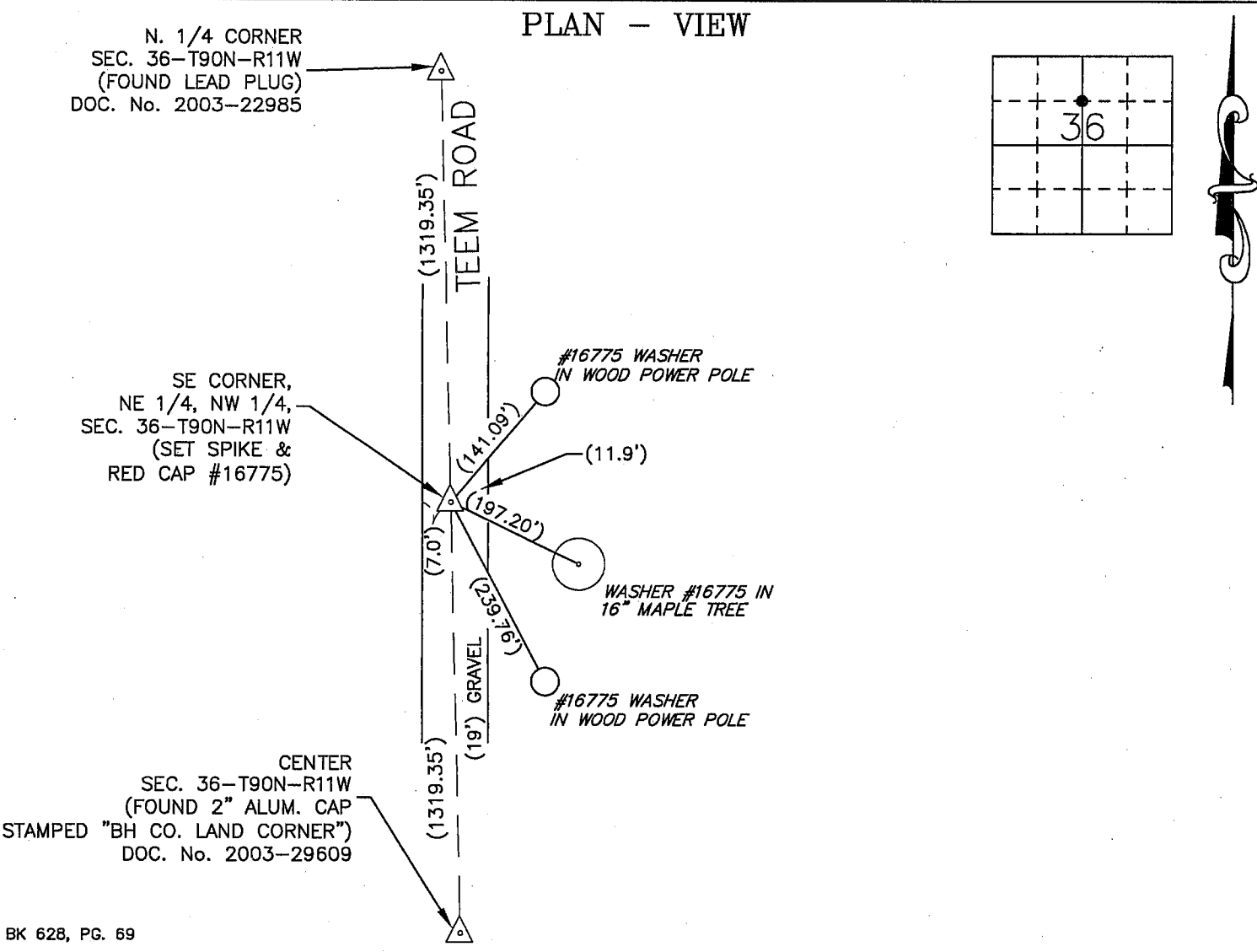
PHONE: (VOICE) 319-235-6294
(FAX) 319-235-0028

UNITED STATES PUBLIC LAND SURVEY CORNER CERTIFICATE

Land Survey Monuments situated in Section 36, Township 90 North, Range 11 West, of the Fifth Principal Meridian, Black Hawk County, Iowa.
Previously recorded in _____ in County Recorder's Office.
(book, page, document number, etc.)

Monument Description and Remarks

No certificate on file. Set spike and red cap #16775 at midpoint between the North Quarter corner of section 36 and the center corner of section 36.



BK 628, PG. 69

I hereby certify that this land surveying document was prepared and the related survey work was performed by me or under my direct personal supervision and that I am a duly Licensed Land Surveyor under the laws of the State of Iowa.

Signature: David L. Scheil
David L. Scheil, L.S.
Date: JUNE 02, 2009 Lic. No. 16775

Pages or Sheets Covered by this Seal: THIS SHEET ONLY.

My license renewal date is December 31, 2010

SEAL

List Corners to be Indexed

Corners	Section	Twp	Range
SE CORNER, NE 1/4 NW 1/4	36	90 N	11 W

(700) 1