

BLACK HAWK COUNTY ENGINEER

PREPARED BY: BLACK HAWK COUNTY ENGINEERS OFFICE
316 E. FIFTH STREET, ROOM 211 WATERLOO, IOWA 50703

PH.# (319) 833-3008 SLSI 9-94
FAX.# (319) 833-3139 CERT 12-96

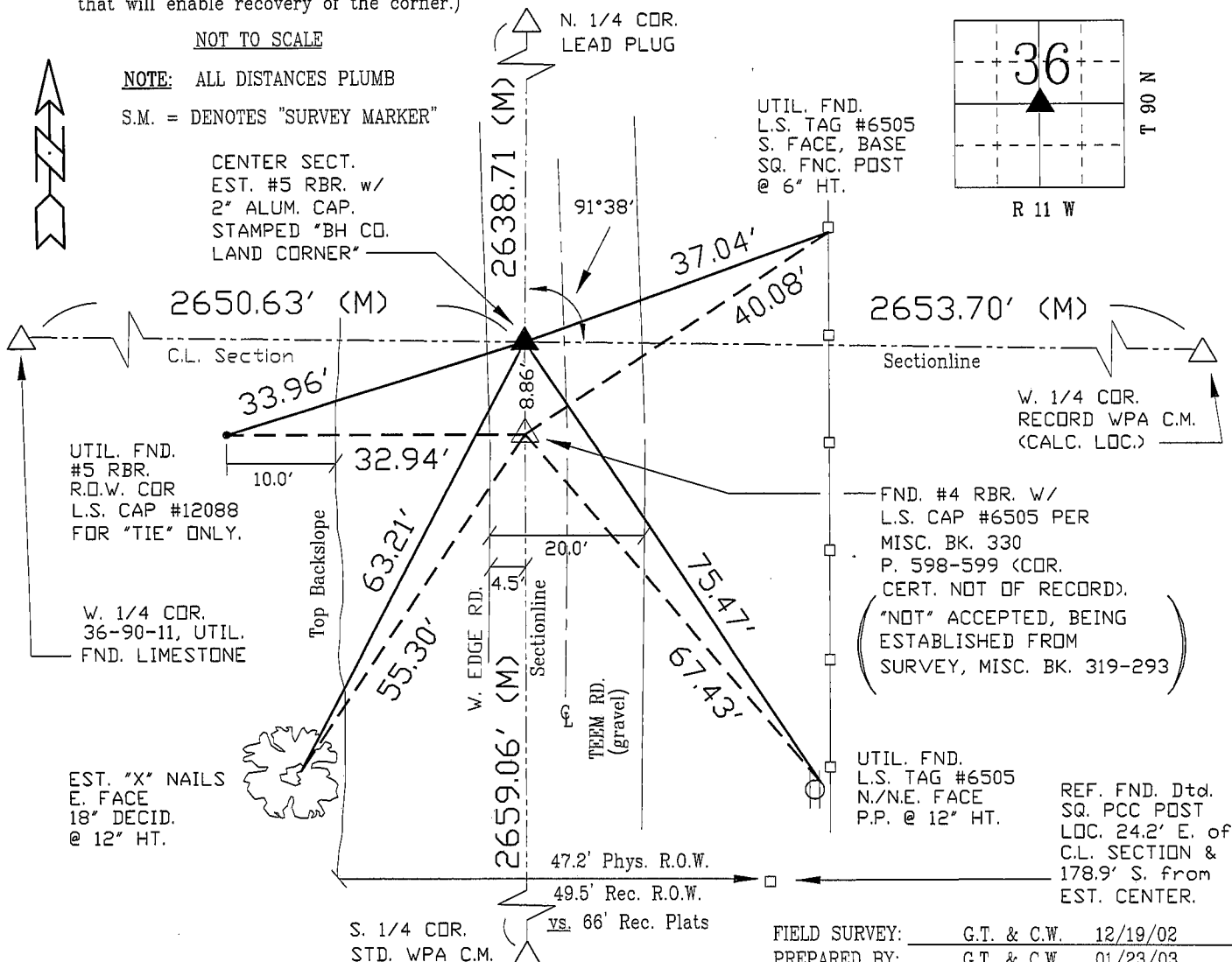
UNITED STATES PUBLIC LAND SURVEY CORNER CERTIFICATE OF
Land Survey Monuments situated in Section 36, Township 90 N,
Range 11 W, of the Fifth Principal Meridian, BLACK HAWK County, Iowa.
Previously recorded in Misc. Book N/A, Page N/A, in County Recorder's Office.

(Show reason for preparing this certificate, the evidence and detailed procedures used in establishing the corner positions and monumentation found or placed.)

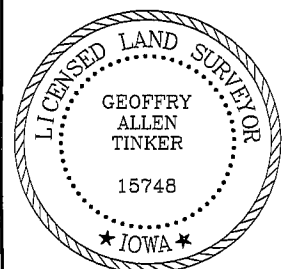
Monument Description and Remarks: CENTER SECT. 36-90-11, EST. #5 RBR.
ALSO FND. #4 REBAR 4.5' E. OF W. EDGE TEEM ROAD @ 3" Dp., PER RECORD
SURVEY BY PLS #6505. EXISTING CENTER "NOT" ACCEPTED AS "LEGAL
CENTER" DUE TO ERROR IN LOCATION OF W. 1/4 CORNER PER PLS #12088
AND PLS #7034 (FOR B.H. CO. CONSERVATION, 1978), VS. RECORD WPA
MEASURE. LEGAL CENTER EST. BY 4-1/4 COR. INTER. FROM FND. CORNERS.

PLAN - VIEW

(Show a minimum of three reference ties to durable physical objects, relevant monuments and physical conditions that will enable recovery of the corner.)



CERTIFICATION



I hereby certify that this land surveying document was prepared and the related survey work was performed by me or under my direct personal supervision and that I am a duly licensed Land Surveyor under the laws of the State of Iowa.

Geoffrey Allen Tinker 04/10/2003
Geoffrey Allen Tinker (date)

License Number 15748

My license renewal date is December 31, 2004

Pages or sheets covered by this seal:

This Land Corner Certificate Only.

LIST CORNERS TO BE INDEXED

Corner	Section	Township	Range
CENTER	36	90 N	11 W