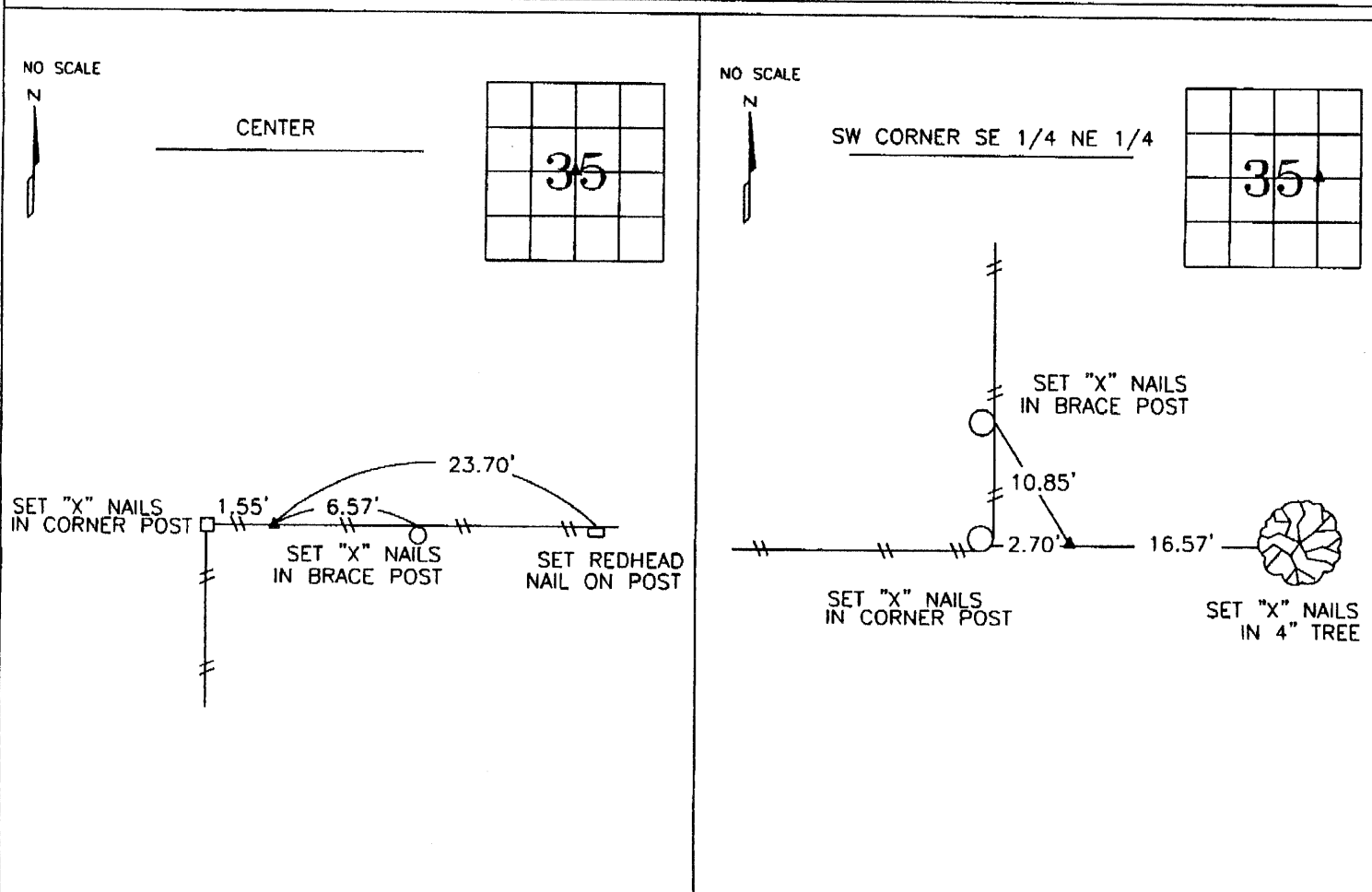


PREPARED BY
STEPHEN MICHAEL BRAIN, BRAIN ENGINEERING, INC., 1540 MIDLAND COURT NE, CEDAR RAPIDS, IOWA PH. (319) 294-9424

UNITED STATES PUBLIC LAND
SURVEY CORNER CERTIFICATE

LAND SURVEY MONUMENTS SITUATED IN SECTION 35, TOWNSHIP 90 NORTH
RANGE 11 WEST OF THE 5TH P.M., BLACK HAWK COUNTY, IOWA.



YPC = YELLOW PLASTIC CAP

PREVIOUSLY RECORDED IN BOOK _____ PAGE _____

MONUMENT DESCRIPTION AND HOW ESTABLISHED _____

SET 1/2" REBAR YPC 9647 AT THE INTERSECTION OF THE

LINE BETWEEN THE N 1/4 CORNER TO THE S 1/4

CORNER AND THE LINE BETWEEN THE W 1/4 CORNER AND

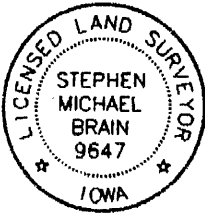
E 1/4 CORNER

PREVIOUSLY RECORDED IN BOOK _____ PAGE _____


MONUMENT DESCRIPTION AND HOW ESTABLISHED _____

SET 1/2" REBAR YPC 9647 AT THE MIDPOINT OF THE

LINE OF THE CENTER OF SECTION AND THE E 1/4 CORNER



I hereby certify that this land surveying document and the related survey work was performed by me or under my direct personal supervision and that I am a duly licensed Land Surveyor under the laws of the State of Iowa.

Signed  Date 9/21/10

Stephen Michael Brain, L.S.
My License Renewal Date is December 31, 2010
License Number 9647
Pages or sheets covered by this seal: 1/1

☒ A.THERE IS NO CERTIFICATE FOR THE CORNER ON FILE WITH THE RECORDER OF THE COUNTY IN WHICH THE CORNER IS LOCATED

☐ B.THE SURVEYOR IN RESPONSIBLE CHARGE OF THE LAND SURVEYING ACCEPTS A CORNER POSITION WHICH DIFFERS FROM THAT SHOWN IN THE PUBLIC RECORDS OF THE COUNTY IN WHICH THE CORNER IS LOCATED.

☐ C.THE CORNER MONUMENT IS REPLACED OR MODIFIED IN ANY WAY.

☐ D.THE REFERENCE TIES REFERRED TO IN AN EXISTING PUBLIC RECORD ARE NOT CORRECT.

CORNERS TO BE INDEXED

CORNER	SECTION	TOWNSHIP	RANGE
CORNER CENTER	35	T90N	R11W
SW CORNER	35	T90N	R11W
SE 1/4 NE 1/4			

BRAIN ENGINEERING, INC.

1540 MIDLAND COURT NE

CEDAR RAPIDS, IOWA 52402

(319) 294-9424

406210-16

900 RS