

PREPARED BY: BLACK HAWK COUNTY ENGINEERS OFFICE
316 E. FIFTH STREET, ROOM 211 WATERLOO, IOWA 50703

PH.# (319) 833-3008
FAX.# (319) 833-3139

SLSI 9-94
BHCO 03-09

UNITED STATES PUBLIC LAND SURVEY CORNER CERTIFICATE OF
Land Survey Monuments situated in Section 34, Township 90 N,
Range 11 W, of the Fifth Principal Meridian, BLACK HAWK County, Iowa.
Previously recorded in Misc. Book N/A, Page N/A, in County Recorder's Office.

(Show reason for preparing this certificate): The corner monument has been Replaced or Modified, per Ia. Code 355.11(1)(c)

(Evidence and detailed procedures used in establishing the corner position(s) and monumentation found or placed.)

Monument Description and Remarks: N.E. CORNER:

CORNER RESET & TIES UPDATED PER PAVEMENT WIDENING AND H.M.A. RESURF. PROJECT
LFM-1019--7X-07. PRIOR TO RESURF. PROJECT, FOUND LEAD PLUG AND TEMP. REF. COR.
LOCATION PER RTK GPS. SOUNDING REMAINED @ ± RTK REFERENCE LOCATION w/ NO
FURTHER EXCAVATION. PLACED CHOKE STONE INTERLAYER AT +3" AND PVMT. RESURFACED
w/ +6" (3" BASE, 1.5" INT. & 1.5" SURF.) H.M.A. PAVING. AFTER H.M.A. RESURFACE, RESET
CORNER WITH 6"L. MAG SPIKE w/ MTL. WASHER (PLS #15748) LOCATED @ ±0.15' SOUTH OF
H.M.A. JOINT & ALIGNED ± w/ C.L. SIDE ROAD TO NORTH. BHCO. RECORD TIES (BK. #1003
REF.) DATED OCT. 1974 CALLS FOR "SET IRON PIN" AND RETIED, WITH ONE REMAINING TIE
TO S.E. OF CORNER RECOVERED.

Page #1 of 3

TopSurv Project Point: #1028

PLAN VIEW

"NOT TO SCALE"

BHco Hist. Ties: BK. #1003 p.34 90-11

FIELD BOOK: Ties per Topcon 7003i #Z0115

(Show a minimum of three reference ties to durable physical objects, relevant monuments and physical conditions that will enable recovery of the corner.)

- 1.) TIES PER EDM MEASURE IN EITHER PRISM "OR" NON-PRISM MODE, WHILE UTILIZING "INDIRECT" MEASURE, WITH ALL DISTANCES PLUMB/HORIZ. (H.D.), UNLESS DENOTED.

- 2.) SECTION LINE MEASURE REFERS TO "LOCAL GROUND" DIST. AND INCLUDES ELLIPSOIDAL (COMBINED) SCALE FACTOR FROM S.P.C. GRID INVERSE (AS OBSERVED, PER AVG. SCALE FACTOR = 1.000093420359)



RES. #10915

SET #5 (5/8") x ±30"L. RBR.
2.0' EAST OF E. FACE STOP
SIGN POST @ ±0.10' DEPTH

N. 1/4 COR.
SECT. 34-T90-R11
(per Updated Cert.)

2639.28' (M.)
(vs. 2639.18' P.)
(vs. 2649.4' WPA)

RES. ENTR.
(GRAVEL)
WHEELER RD.
(GRAVEL)

STOP
SGN.

60.59'

57.52'

179°58'18" (M.)
DUNKERTON RD.
(H.M.A.)

1765.80' (M.)

34
R 11 W
T 90 N

SET CUT "X" @ S.W. COR.
ELEC. TRANSFORMER BASE

P.I. (p. #2)
SET #5 (5/8") x ±30"L.
RBR. @ ±TOP FORESLOPE
@ ±0.20' BELOW GROUND
SURFACE

FND "X" NAILS @ N.W. FACE
FNC. POST @ ±1.6' HT.

PHONE
PED.

92.37' BHCO. R.)
92.18'

-AG. CROPS-

S.P.C., Ia. N. Zone, USft

N = 3673695.88

E = 5292566.86

GRID SCALE = 0.99994682

CONVERGENCE = 0° 56' 03"

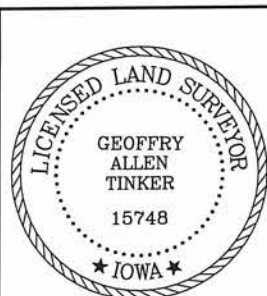
(NAD83-2011 IARTN OBS.)

Page #1 of 3

FIELD SURVEY: S.S. & G.T. 9/10/15

PREPARED BY: S.S. & G.T. 2/10/16

CERTIFICATION



I hereby certify that this land surveying document was prepared and the related survey work was performed by me or under my direct personal supervision and that I am a duly licensed Land Surveyor under the laws of the State of Iowa.

Geoffrey Allen Tinker 2/11/2016
Geoffrey Allen Tinker (date)

License Number 15748

My license renewal date is December 31, 2016

Pages or sheets covered by this seal:

This Land Corner Certificate Only, 3pp.

LIST CORNERS TO BE INDEXED

Corner	Section -	Township -	Range
N.E. Cor.	34	90 N	11 W
N.W. Cor.	35	90 N	11 W
S.E. Cor.	27	90 N	11 W
S.W. Cor.	26	90 N	11 W

INDEX OF ABBREVIATIONS

(M) = "Measured" Dimension "NP" = Reflectorless EDM Meas.
(P) = "Platted" Dimension "MLM" = Indirect Measure
(R) = "Record" Dimension "CM" = Concrete Monument
(C) = "Calculated" Dimension "SM" = Survey Marker Spike/Tag
"IGS" = Iowa Geodetic Survey "PK" = PK/MAG Nail Brand Style
"WPA" = Works Progress Admin. Survey
"o" = per George Miller Survey (BHco Surveyor 1858-1860)
"B" = per John Ball Survey (BHco Surveyor 1866-1891)
"N" = per Nathan Barber Survey (BHco Surveyor 1908-1931)

PREPARED BY: BLACK HAWK COUNTY ENGINEERS OFFICE
316 E. FIFTH STREET, ROOM 211 WATERLOO, IOWA 50703

PH.# (319) 833-3008
FAX.# (319) 833-3139

SLSI 9-94
BHC0 03-09

UNITED STATES PUBLIC LAND SURVEY CORNER CERTIFICATE OF
Land Survey Monuments situated in Section 34, Township 90 N,
Range 11 W, of the Fifth Principal Meridian, BLACK HAWK County, Iowa.
Previously recorded in Misc. Book N/A, Page N/A, in County Recorder's Office.

(Evidence and detailed procedures used in establishing the corner position(s) and monumentation found or placed.)

Monument Description and Remarks: **CONTINUED: PAGE #2 of 3**

REFERENCE TIES TO P.I. EAST OF SAID SECTION CORNER. P.I. SET & TIES ESTABLISHED
PER PAVEMENT WIDENING AND H.M.A. RESURF. PROJECT LFM-1019--7X-07. PRIOR TO
RESURF. PROJECT, WITH "NO" ORIGINAL P.I. MONUMENT FOUND. AFTER H.M.A. RESURFACE,
SET P.I. BEING A #5 (5/8") X ±30"L. REBAR LOCATED @ ±21.1' NORTH OF H.M.A. JOINT.
P.I. REFERENCE IS INCLUDED WITH CORNER TIE FOR PUBLIC RECORD OF ROADWAY
GEOMETRY.

TopSurv Project Point: #2285

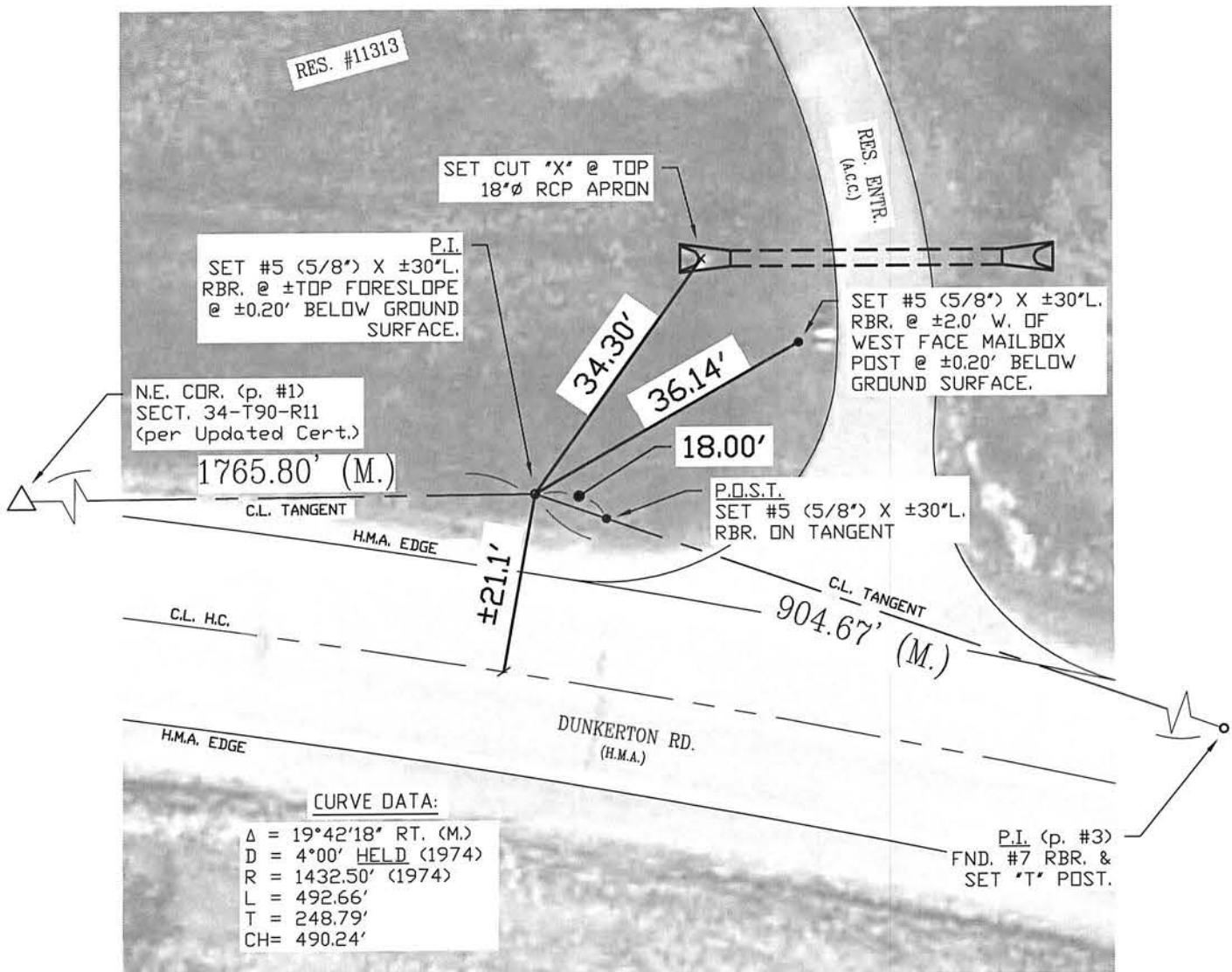
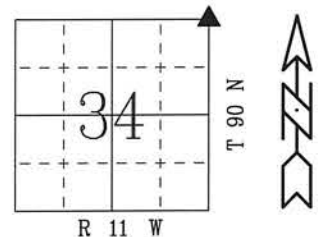
FIELD SURVEY: S.S. & G.T. 9/10/15
PREPARED BY: S.S. & G.T. 2/10/16

PLAN VIEW

"NOT TO SCALE"

(Show a minimum of three reference ties to durable physical objects, relevant monuments and physical conditions that will enable recovery of the corner.)

- 1.) TIES PER RTK GPS (IaRTN-NA11)
MEAS., WITH ALL DISTANCES
PLUMB/HORIZ. (HD), UNLESS
DENOTED.
- 2.) SECTION LINE MEASURE REFERS
TO "LOCAL GROUND" DIST. AND
INCLUDES ELLIPSOIDAL (COMBINED)
SCALE FACTOR FROM S.P.C. GRID
INVERSE (AS OBSERVED), PER AVG.
SCALE FACTOR = 1.000093420359)



PREPARED BY: BLACK HAWK COUNTY ENGINEERS OFFICE
316 E. FIFTH STREET, ROOM 211 WATERLOO, IOWA 50703

PH.# (319) 833-3008
FAX.# (319) 833-3139

SLSI 9-94
BHCO 03-09

UNITED STATES PUBLIC LAND SURVEY CORNER CERTIFICATE OF
Land Survey Monuments situated in Section 34, Township 90 N,
Range 11 W, of the Fifth Principal Meridian, BLACK HAWK County, Iowa.
Previously recorded in Misc. Book N/A, Page N/A, in County Recorder's Office.

(Evidence and detailed procedures used in establishing the corner position(s) and monumentation found or placed.)

Monument Description and Remarks: CONTINUED: PAGE #3 of 3

REFERENCE TO P.I. EAST OF SAID SECTION CORNER, BEING A "FOUND #7 (7/8") REBAR".
P.I. FOUND PER PAVEMENT WIDENING AND H.M.A. RESURFACE PROJECT LFM-1019--7X-07.
P.I. REFERENCE IS INCLUDED WITH CORNER TIE FOR PUBLIC RECORD OF ROADWAY
GEOMETRY. NO LOCAL (AREA) TIES WERE ESTABLISHED, SINCE P.I.'s IN EACH DIRECTION
DEFINE C.L. GEOMETRY AS TIES FOR HISTORICAL REFERENCE. SET "T" POST NEAR P.I.
MONUMENT, AS FOUND.

TopSurv Project Point: #2286

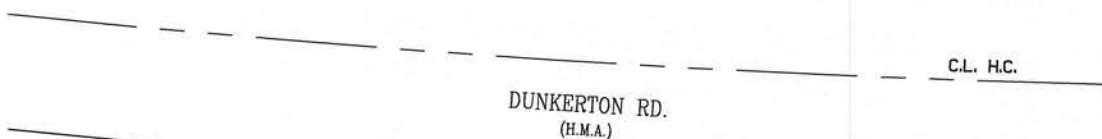
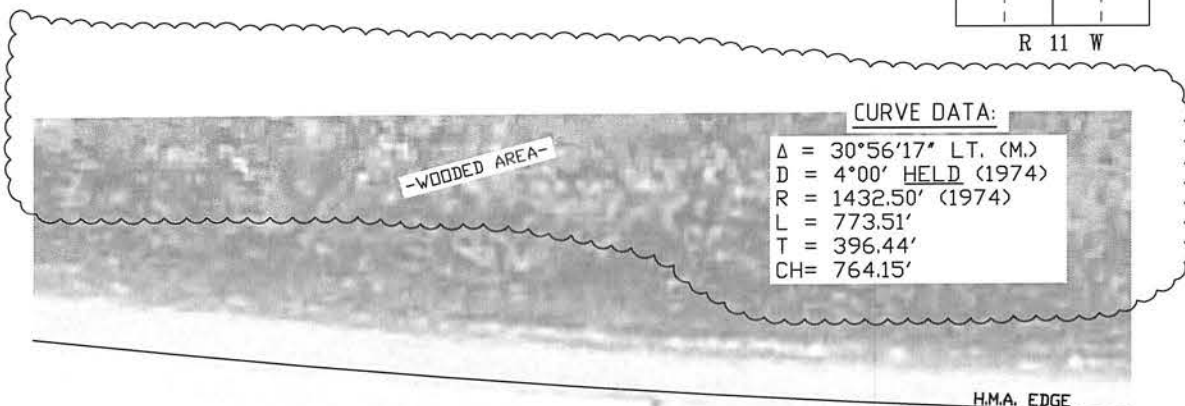
FIELD SURVEY: S.S. & G.T. 9/10/15
PREPARED BY: S.S. & G.T. 2/10/16

PLAN VIEW

"NOT TO SCALE"

(Show a minimum of three reference ties to durable physical objects, relevant monuments and physical conditions that will enable recovery of the corner.)

- SECTION LINE MEASURE REFERS TO "LOCAL GROUND" DIST. AND INCLUDES ELLIPSOIDAL (COMBINED) SCALE FACTOR FROM S.P.C. GRID INVERSE (AS OBSERVED, PER AVG. SCALE FACTOR = 1.000093420359)



P.I. (p. #2)
SET #5 (5/8") X ±30"L.
RBR. @ ±TOP FORESLOPE
@ ±0.20' BELOW GROUND
SURFACE.

SET 6"L. MAG SPIKE
w/ MTL. WASHER
(PLS #15748) @ ±7.75'
N. OF H.M.A. JNT.

C.L. TANGENT
904.67' (M.)

C.L. TANGENT
1411.98' (M.)

P.I.
(PER
OTHER
RECORD)

P.I.
FND. #7 RBR.
& SET "T" POST