

PREPARED BY: BLACK HAWK COUNTY ENGINEERS OFFICE
316 E. FIFTH STREET, ROOM 211 WATERLOO, IOWA 50703

PH.# (319) 833-3008
FAX.# (319) 833-3139
SLSI 9-94
BHCO 03-09

UNITED STATES PUBLIC LAND SURVEY CORNER CERTIFICATE OF
Land Survey Monuments situated in Section 33, Township 90 N,
Range 11 W, of the Fifth Principal Meridian, BLACK HAWK County, Iowa.
Previously recorded in Misc. Book 333, Page 274, in County Recorder's Office.
(Show reason for preparing this certificate): The corner monument has been Replaced or Modified, per Ia. Code 355.11(1)(c)
(Evidence and detailed procedures used in establishing the corner position(s) and monumentation found or placed.)
Monument Description and Remarks: N. 1/4 CORNER:
CORNER RESET & TIES UPDATED PER PAVEMENT WIDENING AND H.M.A. RESURF. PROJECT
LFM-1019--7X-07. PRIOR TO RESURF. PROJECT, FOUND LEAD PLUG PER CURRENT RECORD
AND TEMP. REF. COR. LOCATION PER RTK GPS. SOUNDING REMAINED @ ± RTK REFERENCE
LOCATION w/ NO FURTHER EXCAVATION. PLACED CHOKE STONE INTERLAYER AT +3" AND
PVMT. RESURFACED w/ +6" (3" BASE, 1.5" INT., & 1.5" SURF.) H.M.A. PAVING. AFTER H.M.A.
RESURFACE, RESET CORNER WITH 6"L. MAG SPIKE w/ MTL. WASHER (PLS #15748) LOCATED
@ ±0.15' NORTH OF H.M.A. JOINT AND ALIGNED ± w/ END POST TO NORTH. BHCO. RECORD
TIES (BK. #1003 REF.) DATED OCT. 1974 CALLS FOR "SET IRON PIN" AND RETIED.
ADDITIONAL NOTE STATED "LEAD PLUG IN CONCRETE ROADWAY 0.10 NORTH OF CRACK".

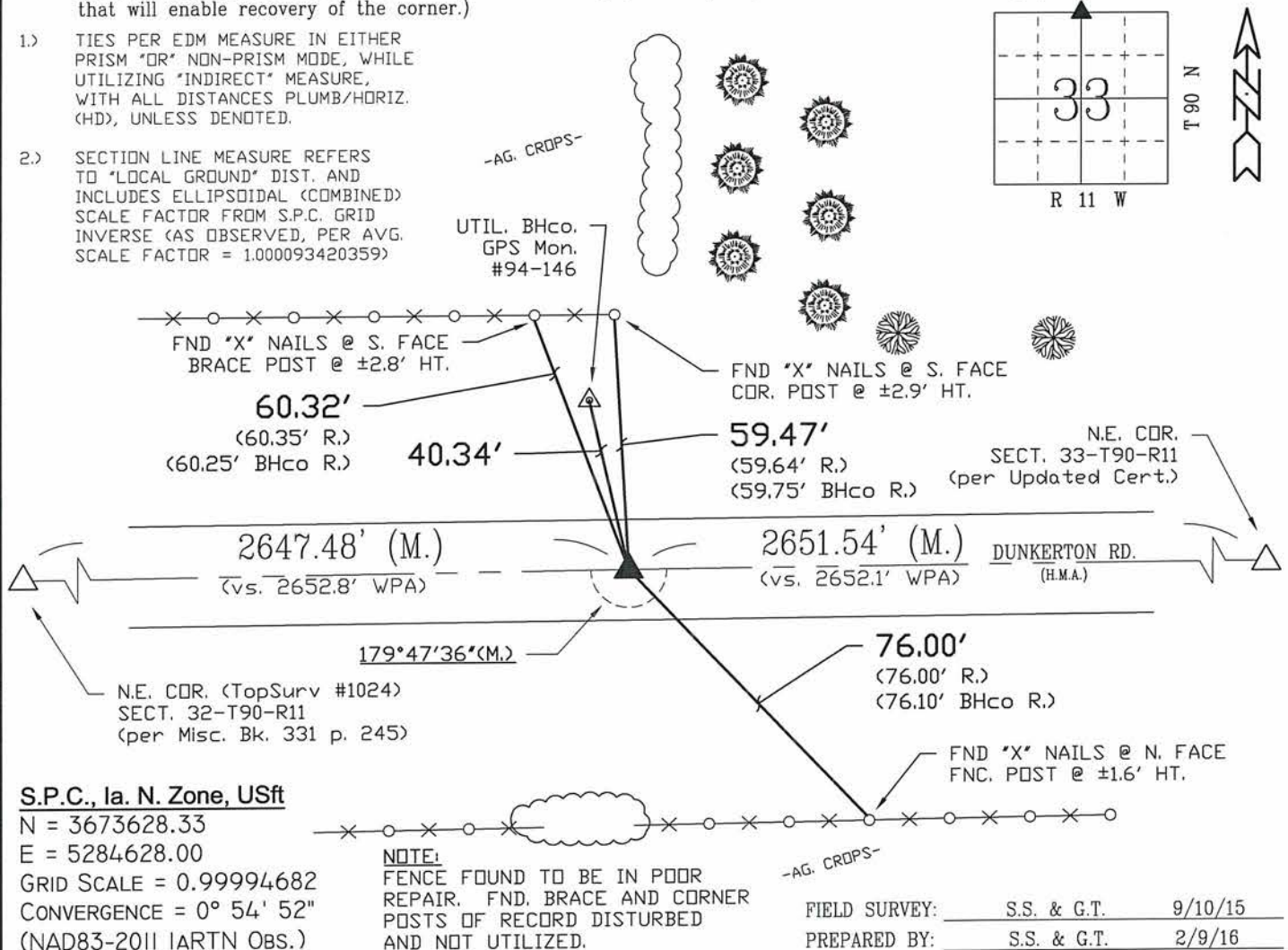
TopSurv Project Point: #1025

PLAN VIEW
"NOT TO SCALE"

BHco Hist. Ties: BK. #1003 p.33 90-11
FIELD BOOK: Ties per Topcon 7003i #Z0115

(Show a minimum of three reference ties to durable physical objects, relevant monuments and physical conditions that will enable recovery of the corner.)

- 1.) TIES PER EDM MEASURE IN EITHER PRISM "OR" NON-PRISM MODE, WHILE UTILIZING "INDIRECT" MEASURE, WITH ALL DISTANCES PLUMB/HORIZ. (HD), UNLESS DENOTED.
- 2.) SECTION LINE MEASURE REFERS TO "LOCAL GROUND" DIST. AND INCLUDES ELLIPSOIDAL (COMBINED) SCALE FACTOR FROM S.P.C. GRID INVERSE (AS OBSERVED, PER AVG. SCALE FACTOR = 1.000093420359)



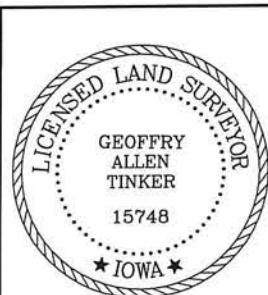
S.P.C., Ia. N. Zone, USft

N = 3673628.33
E = 5284628.00
GRID SCALE = 0.99994682
CONVERGENCE = 0° 54' 52"
(NAD83-2011 IARTN OBS.)

NOTE:
FENCE FOUND TO BE IN POOR
REPAIR. FND. BRACE AND CORNER
POSTS OF RECORD DISTURBED
AND NOT UTILIZED.

FIELD SURVEY: S.S. & G.T. 9/10/15
PREPARED BY: S.S. & G.T. 2/9/16

CERTIFICATION



I hereby certify that this land surveying document was prepared and the related survey work was performed by me or under my direct personal supervision and that I am a duly licensed Land Surveyor under the laws of the State of Iowa.

Geoffry Allen Tinker 2/11/2016
Geoffry Allen Tinker (date)
License Number 15748
My license renewal date is December 31, 2016
Pages or sheets covered by this seal:
This Land Corner Certificate Only.

LIST CORNERS TO BE INDEXED

Corner	Section -	Township -	Range
N. 1/4 Cor.	33	90 N	11 W
S. 1/4 Cor.	28	90 N	11 W

INDEX OF ABBREVIATIONS

(M) = "Measured" Dimension
(P) = "Platted" Dimension
(R) = "Record" Dimension
(C) = "Calculated" Dimension
(IGS) = Iowa Geodetic Survey
"WPA" = Works Progress Admin. Survey
"G" = per George Miller Survey (BHco Surveyor 1858-1860)
"B" = per John Ball Survey (BHco Surveyor 1866-1891)
"N" = per Nathan Barber Survey (BHco Surveyor 1908-1931)
"NP" = Reflectorless EDM Meas.
"MLM" = Indirect Measure
"CM" = Concrete Monument
"SM" = Survey Marker Spike/Tag
"PK" = PK/MAG Nail Brand Style