

Reserved for County Recorder's use

2024-21714

RECORDED: 10/11/2024 01:42:44 PM

RECORDING FEE: \$7.00

REVENUE TAX: \$

COMBINED FEE: \$7.00

SANDIE L. SMITH, RECORDER
BLACK HAWK COUNTY, IOWA

Jeffrey P. Helland, 6109 Chancellor Drive, Cedar Falls, Iowa 50613-6916, (319)-266-0161

UNITED STATES PUBLIC LAND SURVEY CORNER CERTIFICATE OF

LAND SURVEY MONUMENTS SITUATED IN SECTION NO 33, TOWNSHIP NO 90 NORTH, RANGE
NO 11 WEST OF THE FIFTH PRINCIPAL MERIDIAN, BLACK HAWK COUNTY, IOWA
PREVIOUSLY RECORDED IN N/A

(SHOW REASON FOR PREPARING THIS CERTIFICATE, THE EVIDENCE AND DETAILED PROCEDURES USED IN ESTABLISHING THE
CORNER POSITIONS AND MONUMENTATION FOUND OR PLACED)

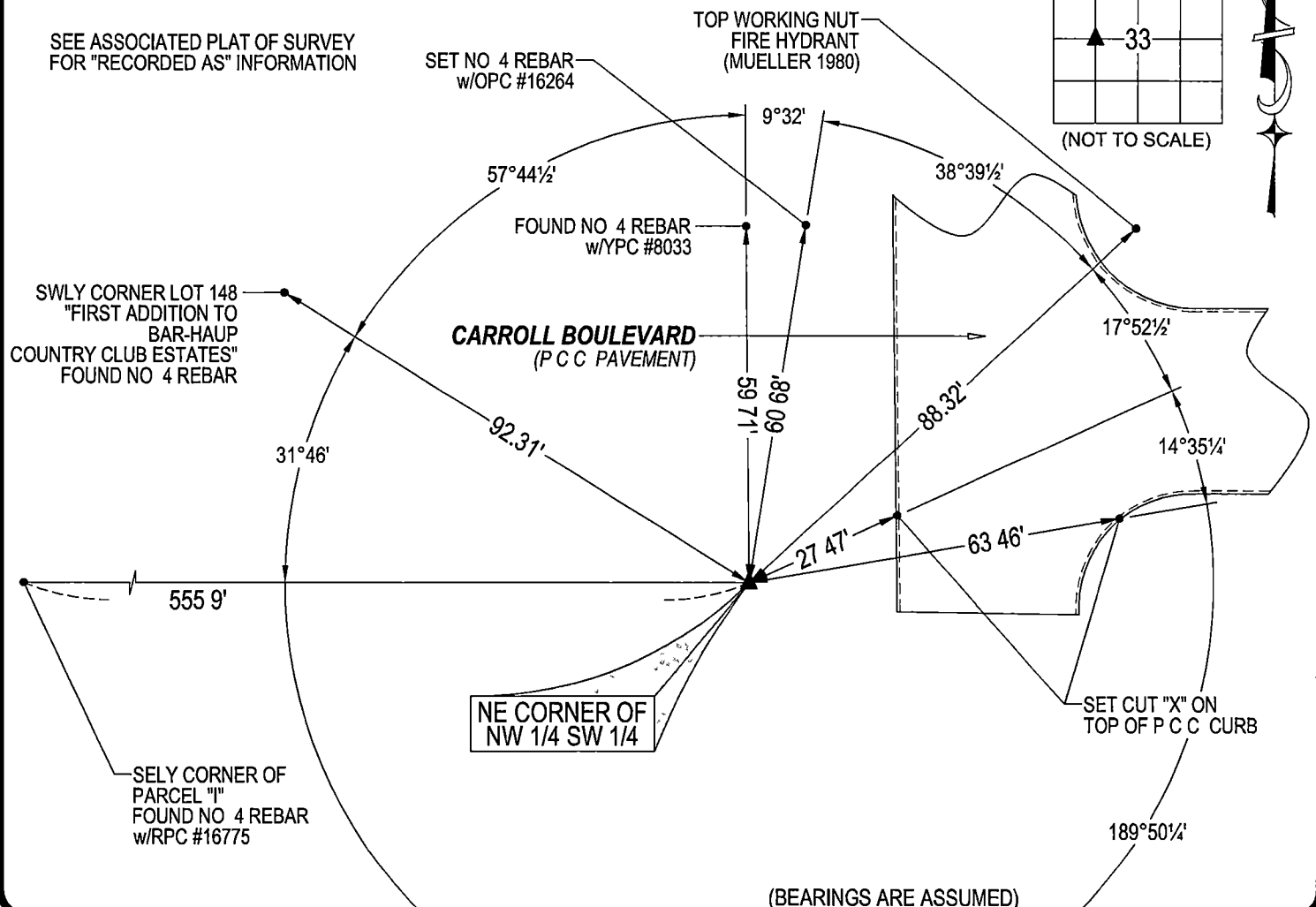
MONUMENT DESCRIPTION AND REMARKS

NO USPLSCC ON FILE SURVEY COMPLETED IN THE SW 1/4 NW 1/4 OF SEC 33-T90N-R11W

→ **NE CORNER OF NW 1/4 SW 1/4:** NO BLACK HAWK COUNTY ENGINEER TIES ARE AVAILABLE. "FIRST ADDITION TO
BAR-HAUP COUNTRY CLUB ESTATES" BY WILLIAM ROBINSON DATED 06/06/1975 CALLS FOR [IRON PIN SET] FOUND NO
4 REBAR w/YPC #8033 (0 2'± DEEP) AND UTILIZED AS THE CORNER

PLAN VIEW

(SHOW A MINIMUM OF THREE REFERENCE TIES TO DURABLE PHYSICAL OBJECTS, RELEVANT MONUMENTS AND PHYSICAL
CONDITIONS THAT WILL ENABLE RECOVERY OF THE CORNER)



HELLAND ENGINEERING & SURVEYING, LTD
6109 Chancellor Drive
Cedar Falls, Iowa 50613-6916
(319)-266-0161

SHINER = 4d NAIL & 1 5/16"Ø METAL SHINER DRAWN BY JPH
BRASS TAG = 4d NAIL & 13/16"Ø BRASS TAG
OPC = PLASTIC CAP (O=ORANGE, R=RED, Y=YELLOW)
(00') RECORDED AS FILE NAME 24-227-63 DWG



I hereby certify that this land surveying document was prepared
and the related survey work was performed by me or under my
direct personal supervision and that I am a duly licensed
Professional Land Surveyor under the laws of the State of Iowa
Jeffrey P. Helland 10/18/2024
License Number 16264
My license renewal date is December 31, 2025
All pages or sheets are covered by this seal except

LIST CORNERS TO BE INDEXED

CORNER	SECTION / TOWNSHIP / RANGE		
NE COR NW 1/4 SW 1/4	33	90N	11W
SE COR SW 1/4 NW 1/4	33	90N	11W
SW COR SE 1/4 NW 1/4	33	90N	11W
NW COR NE 1/4 SW 1/4	33	90N	11W