

ENV.

WAYNE CLAASSEN ENGINEERING AND SURVEYING, INC.  
P.O. BOX 898 WATERLOO, IOWA 50704-0898

PHONE: (VOICE) 319-235-6294  
(FAX) 319-235-0028

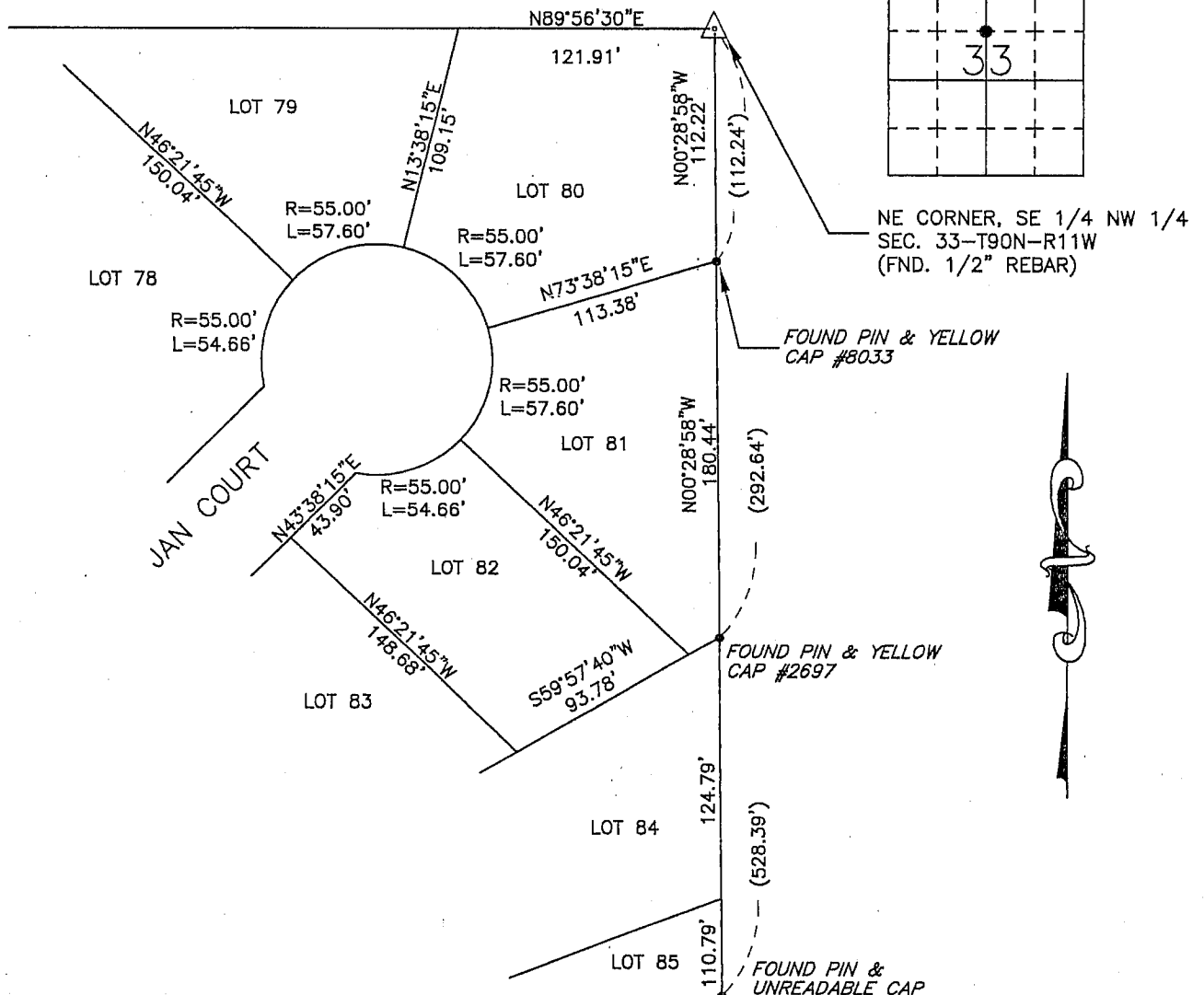
## UNITED STATES PUBLIC LAND SURVEY CORNER CERTIFICATE

Land Survey Monuments situated in Section 33, Township 90 North, Range 11 West, of the Fifth Principal Meridian, Black Hawk County, Iowa.  
Previously recorded in \_\_\_\_\_ in County Recorder's Office.  
(book, page, document number, etc.)

### Monument Description and Remarks

No certificate on file. Found 1/2" rebar as per Second Addition to Bar-Haup Country Club Estates, Dunkerton, Iowa.

### PLAN - VIEW



BK 610-77

I hereby certify that this land surveying document was prepared and the related survey work was performed by me or under my direct personal supervision and that I am a duly Licensed Land Surveyor under the laws of the State of Iowa.

Signature: David L. Scheil  
David L. Scheil, L.S.

Date: AUGUST 31, 2009 Lic. No. 16775

Pages or Sheets Covered by this Seal: THIS SHEET ONLY.

My license renewal date is December 31, 2010

SEAL

### List Corners to be Indexed

Corners	Section	Twp	Range
NE CORNER, SE 1/4 NW 1/4	33	90 N	11 W

