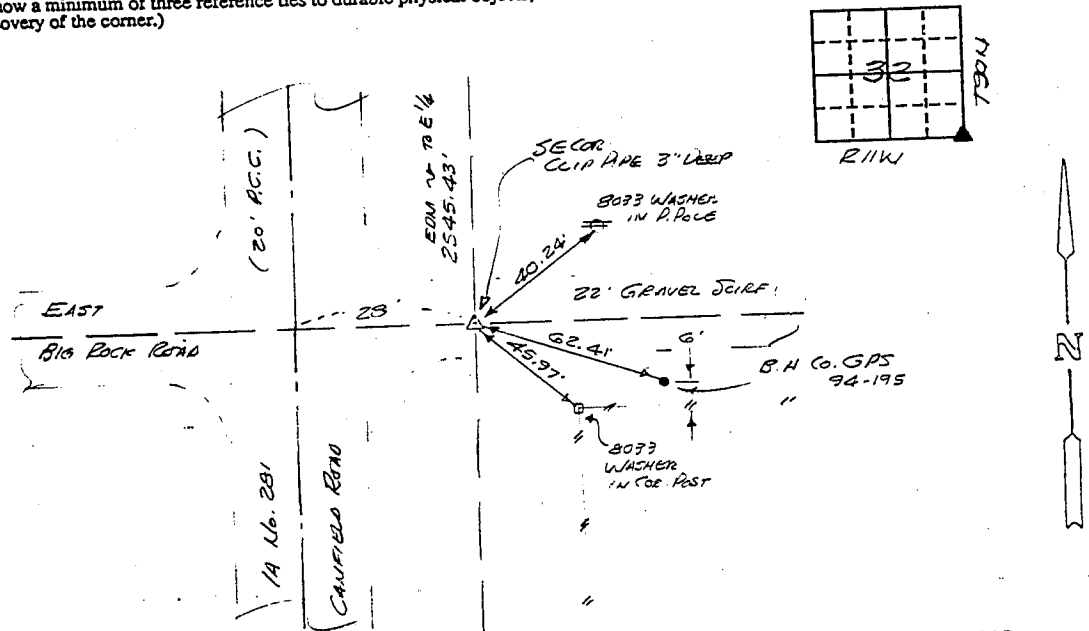


UNITED STATES PUBLIC LAND SURVEY CORNER CERTIFICATE  
OF

Land Survey Monuments situated in Section 32, Township 30N, Range 11W,  
of the Fifth Principal Meridian, BLACK HAWK County, Iowa.  
Previously recorded in 1874 in County Recorder's Office.  
(book, page, document number, etc.)  
(Show reason for preparing this certificate, the evidence and detailed procedures used in establishing the corner positions and monumentation found or placed.)  
Monument Description and Remarks: FOUND CLIP PIPE 3" DEEP IN GRAVEL, 28' EAST  
OF E 1/4 281 (CAMFIELD ROAD) PER B.H. CO. TIES.

PLAN - VIEW

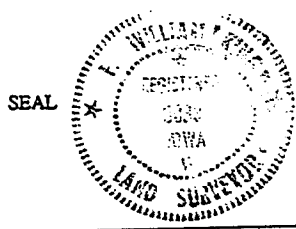
(Show a minimum of three reference ties to durable physical objects, relevant monuments and physical conditions that will enable recovery of the corner.)



WAYNE CLAASSEN ENGINEERING  
AND SURVEYING, INC.  
2709 UNIVERSITY AVE.  
P.O. BOX 898  
WATERLOO, IA 50704

371-37

I hereby certify that the survey work was completed and this certificate was prepared by me or under my direct personal supervision and that I am a duly registered land surveyor under the laws of the state of Iowa.  
Signature: [Signature]  
Name typed or printed: F. WILLIAM KING  
Date: 6-14-1995 Reg. No. 8033



Corners	List Corners to be Indexed Section	Twp	Range
SE	32	30N	11W