

INDEX

BLACK HAWK COUNTY, IOWA:ss

FEE BOOK # 2002 33757

PROOF

FILED FOR RECORD JUN 19 2002 AT 1:30 P. M. FEE 1-5.00/

COMPARED

Catherine L. Loo

BLACK HAWK COUNTY RECORDER

WAYNE CLAASSEN ENGINEERING AND SURVEYING INC

WAYNE CLAASSEN ENGINEERING AND SURVEYING, INC.
P.O. BOX 898 WATERLOO, IOWA 50704-0898PHONE: (VOICE) 319-235-6294
(FAX) 319-235-0028

UNITED STATES PUBLIC LAND SURVEY CORNER CERTIFICATE

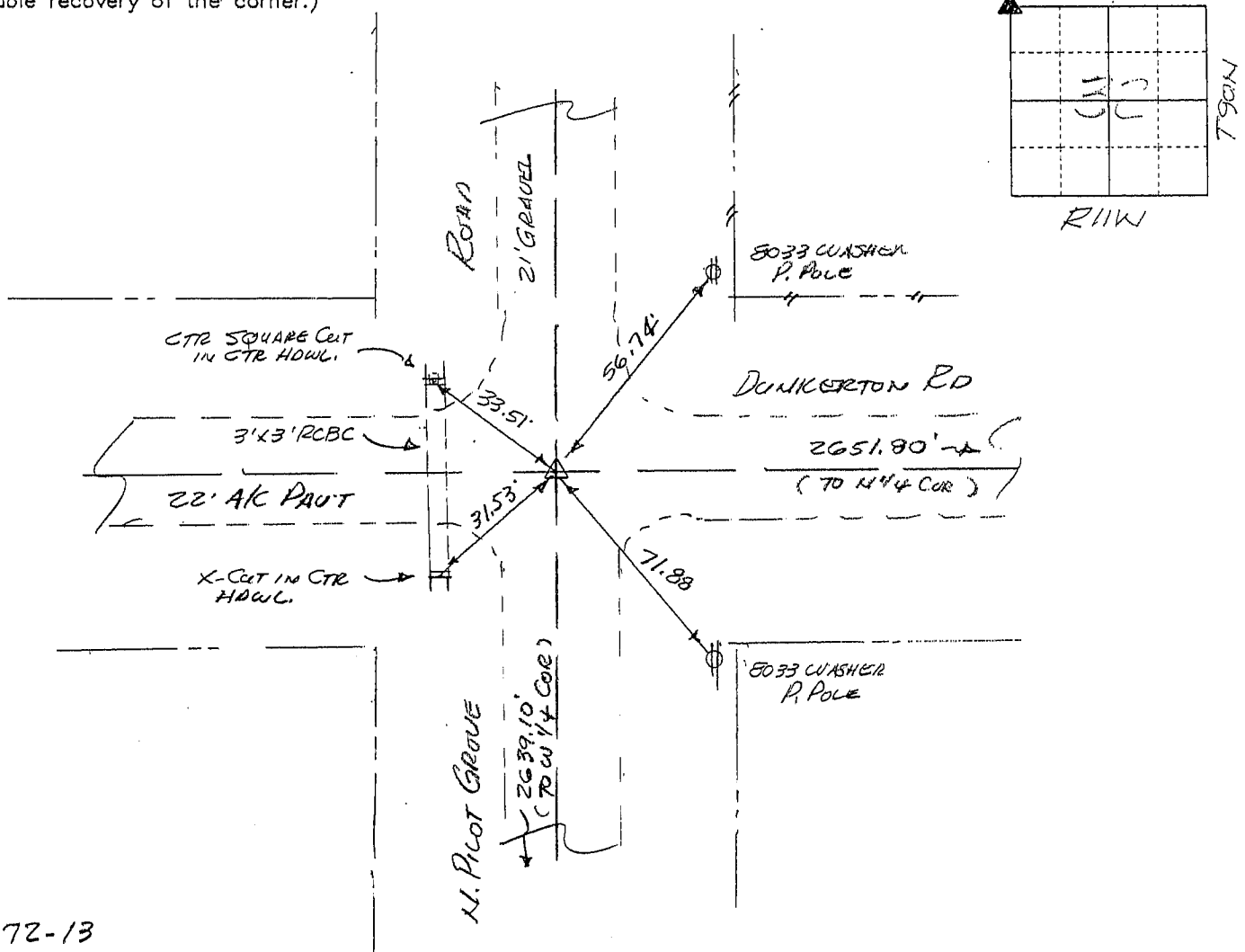
Land Survey Monuments situated in Section 32, Township 90N, Range 11W, of the Fifth Principal Meridian, BLACK HAWK County, Iowa.
Previously recorded in N/A in County Recorder's Office.
(book, page, document number, etc.)

(Show reason for preparing this certificate, the evidence and detailed procedures used in establishing the corner positions and monumentation found or placed.)

Monument Description and Remarks NNW CORNER, FOUND 5/8" Ø REBAR IN ASPHALT PAVT
PER COUNTY TIES.

PLAN - VIEW

(Show a minimum of three reference ties to durable physical objects, relevant monuments and physical conditions that will enable recovery of the corner.)



572-13

I hereby certify that the survey work was completed and this certificate was prepared by me or under my direct personal supervision and that I am a duly licensed land surveyor under the laws of the state of Iowa.

List Corners to be Indexed

Corners	Section	Twp	Range
NNW	32	90N	11W

Signature: *F. William King*

(Name typed or printed:) F. WILLIAM KING

Date: June 18, 2002Lic. No. 8033

SEAL

