

*ENV*  
WAYNE CLAASSEN ENGINEERING AND SURVEYING, INC.  
P.O. BOX 898 WATERLOO, IOWA 50704-0898

PHONE: (VOICE) 319-235-6294  
(FAX) 319-235-0028

## UNITED STATES PUBLIC LAND SURVEY CORNER CERTIFICATE

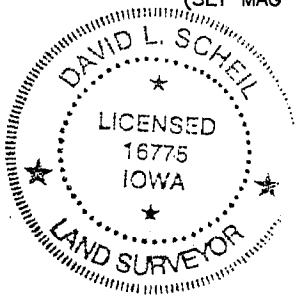
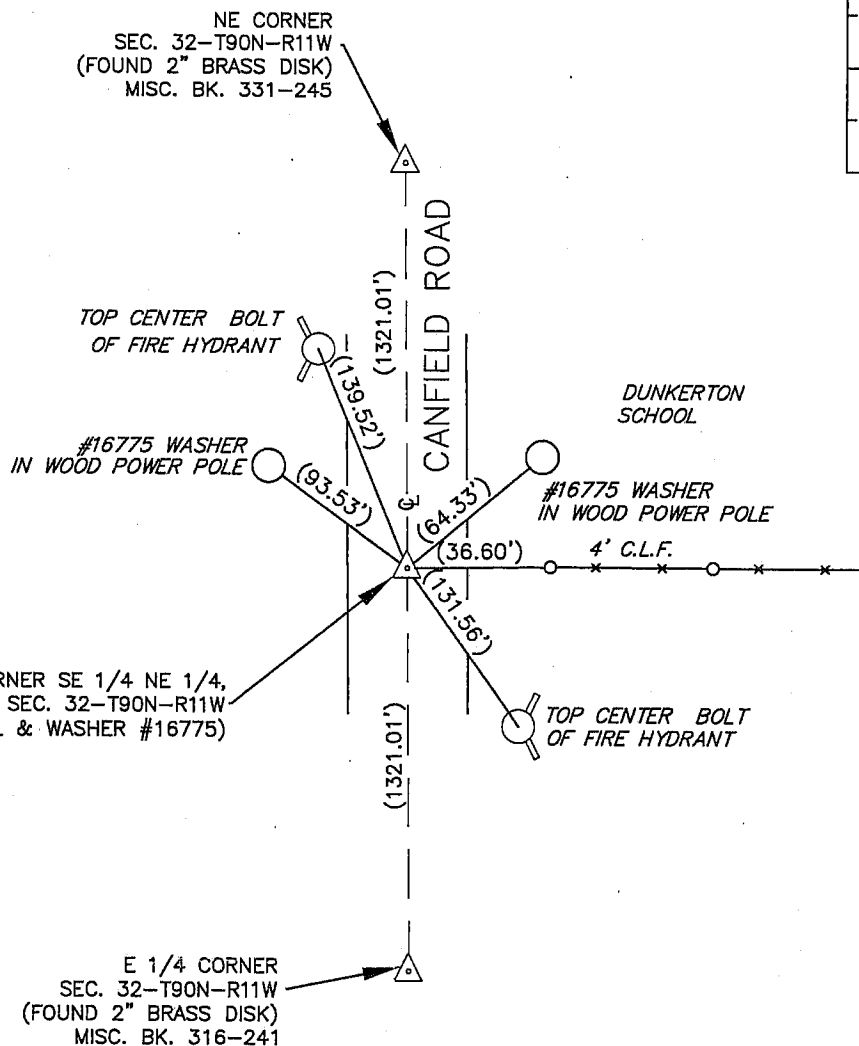
Land Survey Monuments situated in Section 32, Township 90 North, Range 11 West, of the Fifth Principal Meridian, Black Hawk County, Iowa.

Previously recorded in \_\_\_\_\_ in County Recorder's Office.  
(book, page, document number, etc.)

### Monument Description and Remarks

No certificate on file. Set mag nail and washer at midpoint between the Northeast corner of Section 32 and the East Quarter corner of Section 32.

### PLAN - VIEW



BK 659-8

I hereby certify that this land surveying document was prepared and the related survey work was performed by me or under my direct personal supervision and that I am a duly Licensed Land Surveyor under the laws of the State of Iowa.

Signature: \_\_\_\_\_

David L. Scheil, L.S.

Date: Nov. 13, 2009 Lic. No. 16775

Pages or Sheets Covered by this Seal: THIS SHEET ONLY.

My license renewal date is December 31, 2010

SEAL

### List Corners to be Indexed

Corners	Section	Twp	Range
NE CORNER, SE 1/4, NE 1/4	32	90 N	11 W

(9.00)