

HAROLD MICHELS 410 BRENTWOOD AVE WATERLOO, IA 50701

Harold F. Michels 410 Brentwood Ave., Waterloo, Iowa 50701 319-235-7770

UNITED STATES PUBLIC LAND SURVEY CORNER CERTIFICATE

Land Survey Monuments situated in Section 31, Township 90 North, Range 11 West, of the Fifth Principal Meridian, Black Hawk County, Iowa.  
Previously recorded in (none) Fee Bk #2002 33758 in County Recorder's Office.  
(book, page, document number, etc.) LS #8033 AS W. 1/4 32 *JH*

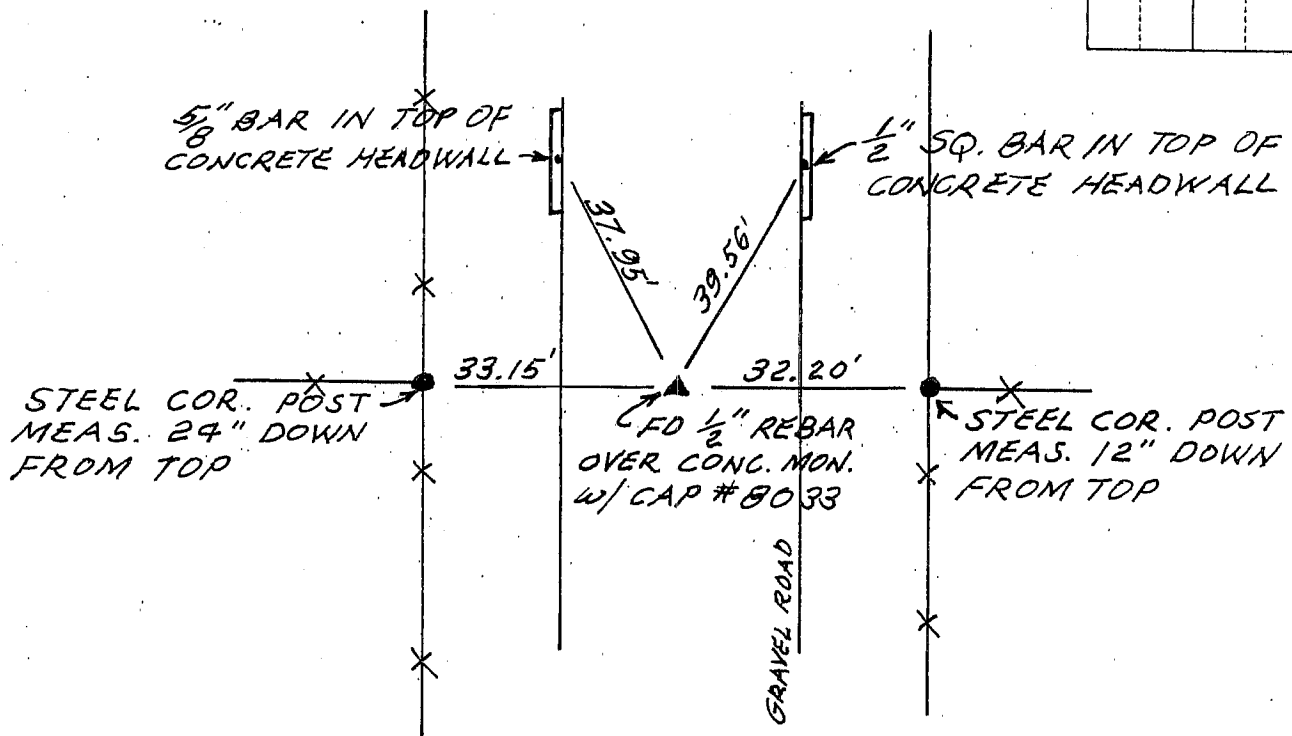
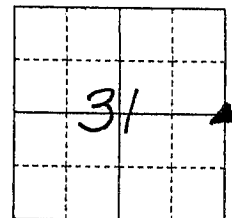
(Show reason for preparing this certificate, the evidence and detailed procedures used in establishing the corner positions and monumentation found or placed.)

Monument Description and Remarks Found per existing ties from county engineer's office. Set new ties.

PLAN - VIEW

(Show a minimum of three reference ties to durable physical objects, relevant monuments and physical conditions that will enable recovery of the corner.)

NE CORNER SE 4 :



I hereby certify that the survey work was completed and this certificate was prepared by me or under my direct personal supervision and that I am a duly registered land surveyor under the laws of the state of Iowa.

Signature: *Harold F. Michels*

Date: Mar. 29, 2002. Harold F. Michels Reg. No. 3862

My registration renewal date is Dec. 31, 2003.

SEAL

List Corners to be Indexed

Corners	Section	Twp	Range
NE of SE 4	31	90	11

