



Doc ID: 009799140001 Type: GEN  
Recorded: 04/10/2020 at 11:00:26 AM  
Fee Amt: \$7.00 Page 1 of 1  
Black Hawk County Iowa  
SANDIE L. SMITH RECORDER

File 2020-00017506

enV  
\*

WAYNE CLAASSEN ENGINEERING AND SURVEYING, INC.  
P.O. BOX 898 WATERLOO, IOWA 50704-0898

PHONE: (VOICE) 319-235-6294  
(FAX) 319-235-0028

UNITED STATES PUBLIC LAND SURVEY CORNER CERTIFICATE

Land Survey Monuments situated in Section 30, Township 90 North, Range 11 West, of the Fifth Principal Meridian, Black Hawk County, Iowa.

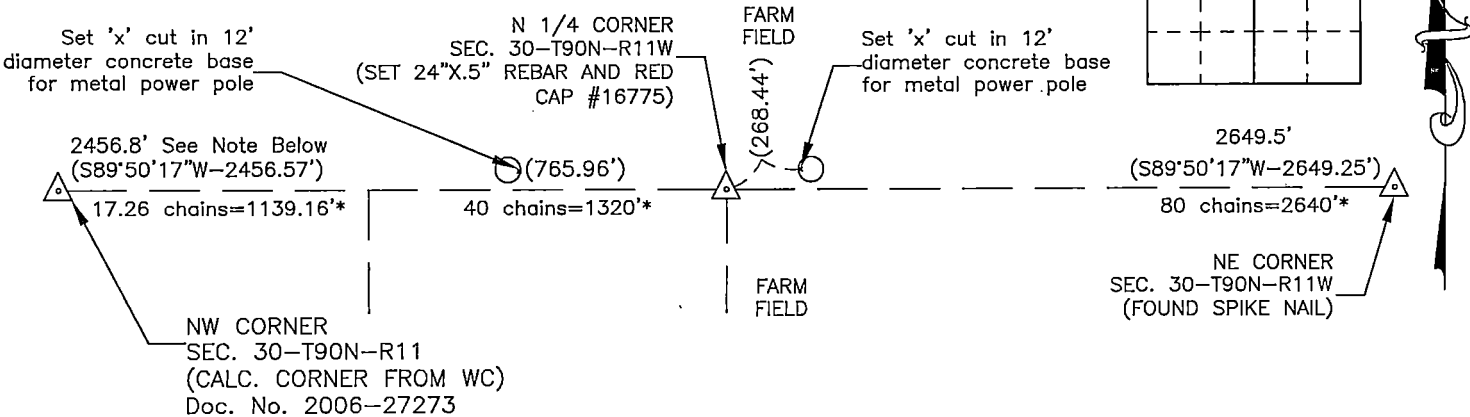
Previously recorded in \_\_\_\_\_ in County Recorder's Office.  
(book, page, document number, etc.)

Monument Description and Remarks

WPA notes from the Black Hawk County Recorder's Office (dated 9-22-39) state the following: "At location indicated by random line dug hole 5' square 18" deep. found Niggerhead stone 9"x11x19" also remnant of Old Oak Hub. Lowered all evidence and set concrete monument with cap marked 19 / 30. Set top of cement monument 12" deep."  
WPA notes also indicate it is near the intersection of a N-S fence with fence heading east.  
On April 01, 2020, Mr. R. Happel called and informed me his father removed the above fences with a bulldozer in the early 1960's.  
Aerial photo from 2012 indicate the monument was located near the base of wood power pole, which has since been removed.  
Went to location of monument, which is in a cultivated field, and searched (dug and probed a 20' radius area) and did not find monument. Re-established obliterated corner using single proportioned distances from WPA chaining notes and on line between NE corner and NW corner. Set 24"x0.5" rebar and red cap #16775 12" deep. Set pin was near a buried wood fence post.

PLAN - VIEW

- Reason for filing certificate:
- ☒ There is no certificate on file with the Recorder's Office.
  - ☐ Accepts corner position which differs from the one shown in above document.
  - ☐ The corner monument was replaced or modified.
  - ☐ The reference ties in above document were incorrect or missing.



NOTE:

1. The WPA chaining notes had this distance as 2356.8'. In my opinion, this distance is off by 100'.

- (000.00') DENOTES FIELD DIMENSION
- 000.00' DENOTES FIELD DIMENSION FROM WPA CHAINING NOTES
- 000.00'\* DENOTES FIELD DIMENSION FROM PLAT W/ ORIGINAL CHAINING NOTES

Iowa State Plane Coordinate System  
(North Zone, 2011 Adj.)  
N= 3678847.1  
E= 5273929.5  
(for location purposes only)

767-08

I hereby certify that this land surveying document was prepared and the related survey work was performed by me or under my direct personal supervision and that I am a duly Licensed Land Surveyor under the laws of the State of Iowa.

Signature: David L. Scheil  
David L. Scheil, L.S.

Date: April 08, 2020 Lic. No. 16775

Pages or Sheets Covered by this Seal: THIS SHEET ONLY.

My license renewal date is December 31, 2020

SEAL

List Corners to be Indexed

Corners	Section	Twp	Range
N 1/4 CORNER,	30	90 N	11 W
S 1/4 CORNERS	19	90 N	11 W

