

PROOF VS FILED FOR RECORD SEP 23, 2002, AT 12:30 P.M. FEE N/CCOMPARED VS*Richard L. King*

BLACK HAWK COUNTY RECORDER

BLACK HAWK COUNTY ENGINEER'S OFFICE

PREPARED BY: BLACK HAWK COUNTY ENGINEERS OFFICE
316 E. FIFTH STREET, ROOM 211 WATERLOO, IOWA 50703PH.# (319) 833-3008
FAX.# (319) 833-3139SLSI 9-94
CERT 12-96

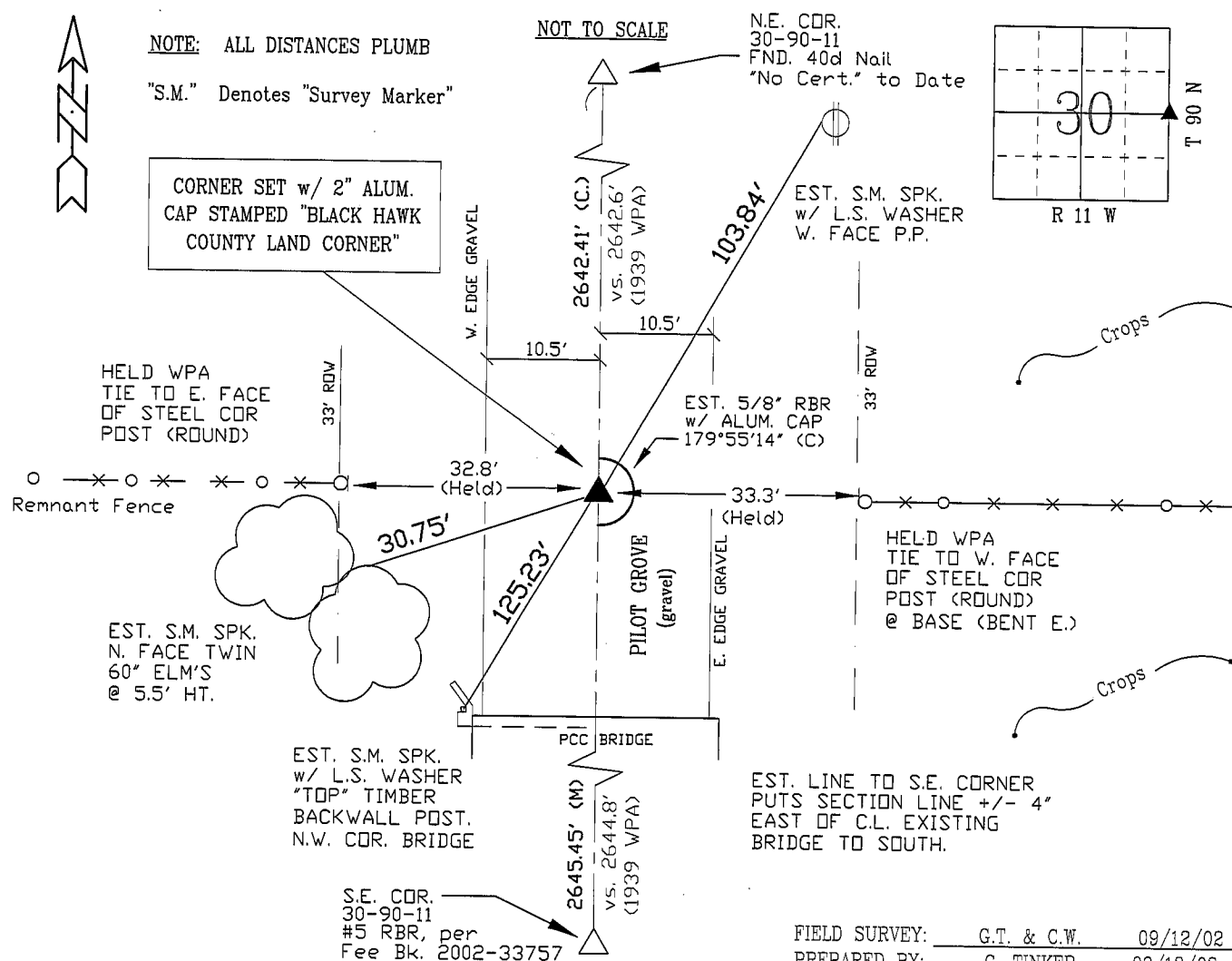
UNITED STATES PUBLIC LAND SURVEY CORNER CERTIFICATE OF
Land Survey Monuments situated in Section 30, Township 90 N,
Range 11 W, of the Fifth Principal Meridian, BLACK HAWK County, Iowa.
Previously recorded in Misc. Book N/A, Page N/A, in County Recorder's Office.

(Show reason for preparing this certificate, the evidence and detailed procedures used in establishing the corner positions and monumentation found or placed.)

Monument Description and Remarks: PRORATED WPA MEAS. OF E. LINE SECT.
OPENED 2.5' DIA. HOLE TO 3' DEEP, AND PROBED +/- LOC'S. FOUND NOTHING.
WPA REC. TIES FROM STEEL CORNER POSTS HELD, FIT TO EST. E/W DIR.,
WITH LINE FENCE TO E. & W. SPLIT AS THE N/S DIR. TO ESTABLISH CORNER.
MEASURED DEFL. CALC'ED FROM INDIRECT MEAS. OF E. LINE SECTION, w/ COR.
EST. 1.8' W. OF SAID LINE. SET 42"L.x5/8" RBR. w/ ALUM. CAP @ 6" DEEP.

PLAN - VIEW

(Show a minimum of three reference ties to durable physical objects, relevant monuments and physical conditions that will enable recovery of the corner.)



CERTIFICATION

I hereby certify that this land surveying document
was prepared and the related survey work was
performed by me or under my direct personal
supervision and that I am a duly licensed Land
Surveyor under the laws of the State of Iowa.

Richard L. King 9/21/02
Richard L. King (date)

License Number 3890

My license renewal date is December 31, 2003

Pages or sheets covered by this seal:

This Land Corner Certificate Only.

LIST CORNERS TO BE INDEXED

Corner Section - Township - Range

E. 1/4 30 90 N 11 W

