

File **2020-00017507**

PHONE: (VOICE) 319-235-6294  
(FAX) 319-235-0028

Land Survey Monuments situated in Section 30, Township 90 North, Range 11 West, of the Fifth Principal Meridian, Black Hawk County, Iowa.

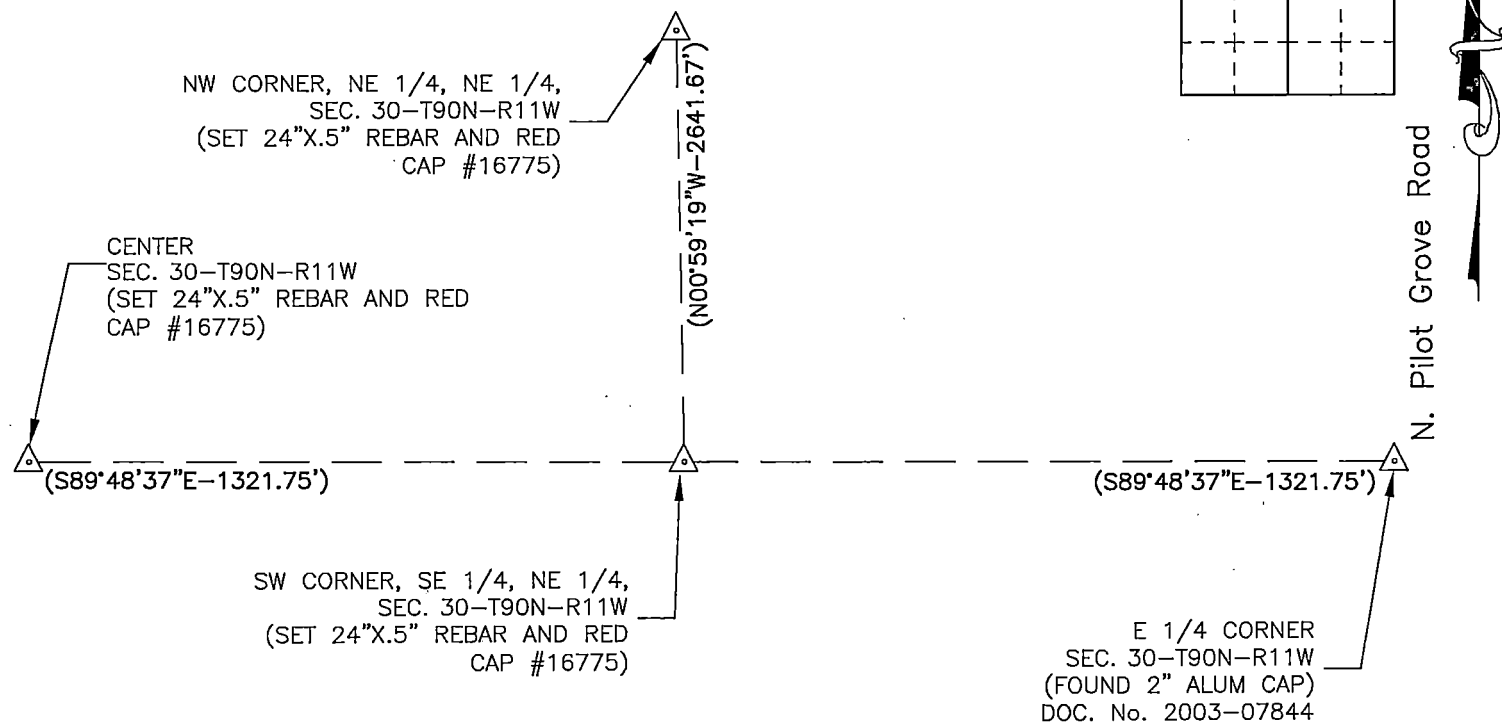
Previously recorded in \_\_\_\_\_ in County Recorder's Office.  
(book, page, document number, etc.)

Monument Description and Remarks

Set 24"x0.5" rebar and red cap #16775 at mid point between center of Section and East 1/4 corner of Section.

Reason for filing certificate:

- ☒ There is no certificate on file with the Recorder's Office.
- ☐ Accepts corner position which differs from the one shown in above document.
- ☐ The corner monument was replaced or modified.
- ☐ The reference ties in above document were incorrect or missing.



Iowa State Plane Coordinate System  
(North Zone, 2011 Adj.)  
N= 3676202.2  
E= 5275299.6  
(for location purposes only)

767-08

I hereby certify that this land surveying document was prepared and the related survey work was performed by me or under my direct personal supervision and that I am a duly Licensed Land Surveyor under the laws of the State of Iowa.

Signature: \_\_\_\_\_  
David L. Scheil, L.S.

Date: APRIL 08, 2020 Lic. No. 16775

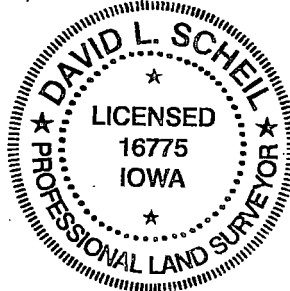
Pages or Sheets Covered by this Seal: THIS SHEET ONLY.

My license renewal date is December 31, 2020

SEAL

List Corners to be Indexed

Corners	Section	Twp	Range
SW CORNER, SE 1/4, NE 1/4	30	90 N	11 W



File Number: 2020-00017507 Seq: 1