

016230

SC
MISC
INDEX 5TS
MARGIN
PROOF
COMPARE

BLACK HAWK COUNTY IOWA.SS
Filed for record DEC 17 2001 at
4:00 P.M. and recorded in Book 345
of MISC Page 52

Catherine A. Lee

RECORDER

FEE 1-5.00Z
IOWA DEPARTMENT OF TRANSPORTATION
PO BOX 741
MASON CITY IA 50402-0741

PREPARED BY KENNETH D. STARK IOWA DEPARTMENT OF TRANSPORTATION BOX 741, MASON CITY, IOWA 50401 515-423-7584

UNITED STATES PUBLIC LAND SURVEY CORNER CERTIFICATE

OF

Land Survey Monuments situated in Section 29, Township 90N, Range 11W
of the Fifth Principal Meridian, BLACK HAWK County, Iowa.

Previously recorded in MISC. BK. ~~331~~ p. 245 in County Recorder's Office.
(book, page, document number, etc.)

(Show reason for preparing this certificate, the evidence and detailed procedures used in establishing the corner positions and monumentation found or placed.)

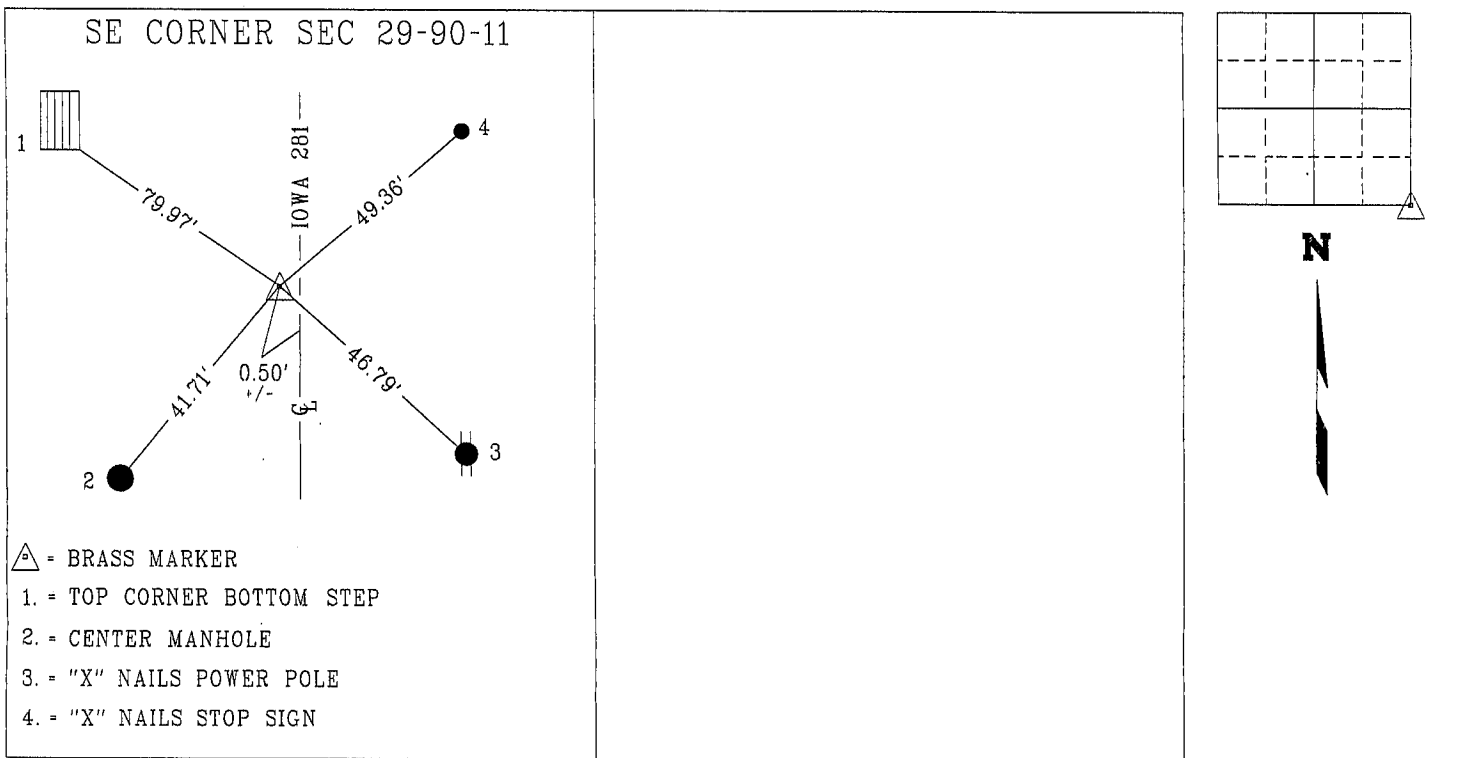
Monument Description and Remarks:

SE CORNER SEC 29-90-11

FOUND BRASS MARKER

PLAN - VIEW

(Show a minimum of three reference ties to durable physical objects, relevant monuments and physical conditions that will enable recovery of the corner.)



LICENSED LAND SURVEYOR
KENNETH D. STARK
10898
IOWA

I hereby certify that this land surveying document was prepared and the related survey work was performed by me or under my personal supervision and that I am a duly licensed Land Surveyor under the laws of the state of Iowa.
Kenneth D. Stark 12-11-01
Kenneth D. Stark Date
License number 10898
My License renewal date is December 31, 2003
Pages or sheets covered by this seal. 1

List Corners to be Indexed

Corner	Section	Township	Range
SE CORNER	29	90N	11W