

Jeffrey P. Helland, 1107 Technology Parkway, Cedar Falls, Iowa 50613-6951, (319)-266-0161

## UNITED STATES PUBLIC LAND SURVEY CORNER CERTIFICATE OF

LAND SURVEY MONUMENTS SITUATED IN SECTION NO. 29, TOWNSHIP NO. 90 NORTH, RANGE  
NO. 11 WEST OF THE FIFTH PRINCIPAL MERIDIAN, BLACK HAWK COUNTY, IOWA.  
PREVIOUSLY RECORDED IN N/A

(SHOW REASON FOR PREPARING THIS CERTIFICATE, THE EVIDENCE AND DETAILED PROCEDURES USED IN ESTABLISHING THE  
CORNER POSITIONS AND MONUMENTATION FOUND OR PLACED.)

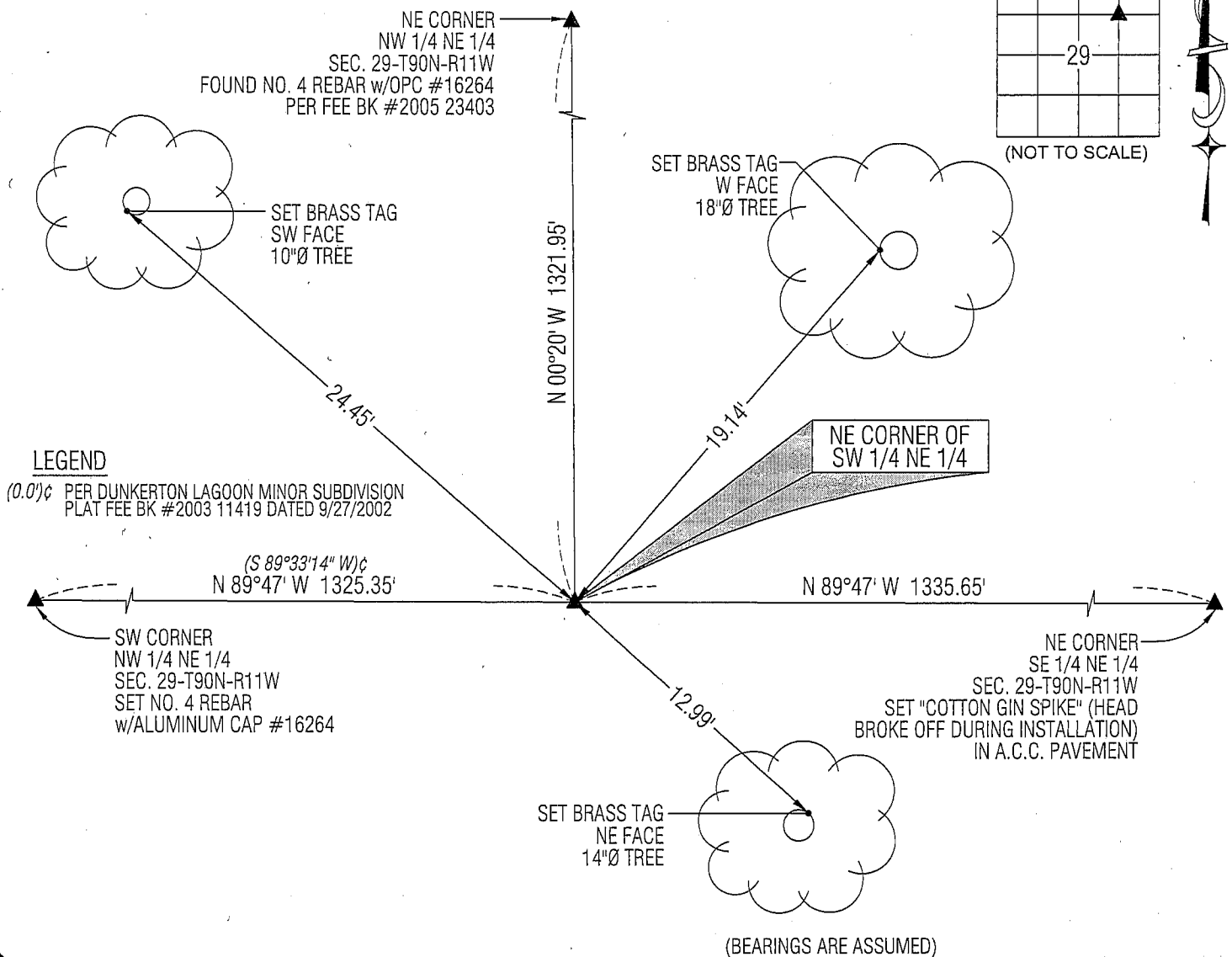
### MONUMENT DESCRIPTION AND REMARKS:

NO USPLSCC ON FILE. SURVEY COMPLETED IN THE NE 1/4 OF SEC. 29-T90N-R11W.

→ **NE CORNER SW 1/4 NE 1/4:** DUNKERTON LAGOON MINOR SUBDIVISION PLAT FEE BK #2003 11419 DATED 9/27/2002  
CALLS FOR [PROPERTY CORNER FOUND]. PLAT OF SURVEY FEE BK #2005 03069 DATED 7/29/2004 CALLS FOR [FD 5/8"  
REBAR w/CAP #12088]. FOUND NO. 5 REBAR w/RPC #12088 CORRESPONDING WITHIN REASON TO PREVIOUS SAID  
SURVEYS. NO RECORD FOUND OF WHEN SAID CORNER WAS SET. UTILIZED SAID REBAR AS CORNER.

### PLAN VIEW

(SHOW A MINIMUM OF THREE REFERENCE TIES TO DURABLE PHYSICAL OBJECTS, RELEVANT MONUMENTS AND PHYSICAL  
CONDITIONS THAT WILL ENABLE RECOVERY OF THE CORNER.)



**LEGEND**  
(0.0') PER DUNKERTON LAGOON MINOR SUBDIVISION  
PLAT FEE BK #2003 11419 DATED 9/27/2002

(S 89°33'14\"/>

SW CORNER  
NW 1/4 NE 1/4  
SEC. 29-T90N-R11W  
SET NO. 4 REBAR  
w/ALUMINUM CAP #16264

N 89°47' W 1335.65'

NE CORNER  
SE 1/4 NE 1/4  
SEC. 29-T90N-R11W  
SET "COTTON GIN SPIKE" (HEAD  
BROKE OFF DURING INSTALLATION)  
IN A.C.C. PAVEMENT

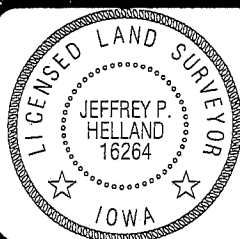
SET BRASS TAG  
NE FACE  
14"Ø TREE

(BEARINGS ARE ASSUMED)



**HELLAND ENGINEERING & SURVEYING, LTD.**  
1107 Technology Parkway  
Cedar Falls, Iowa 50613-6951  
(319)-266-0161

SHINER = 8D NAIL & 1 5/16"Ø METAL SHINER  
BRASS TAG = 13/16"Ø BRASS TAG  
OPC = PLASTIC CAP (O=ORANGE, R=RED, Y=YELLOW)  
(00') RECORDED AS FILE NAME: 08-170C3.DWG



I hereby certify that this land surveying document was prepared  
and the related survey work was performed by me or under my  
direct personal supervision and that I am a duly licensed Land  
Surveyor under the laws of the State of Iowa.

*Jeffrey P. Helland 3/5/09*  
Jeffrey P. Helland  
License Number 16264  
My license renewal date is December 31, 2009.  
All pages or sheets are covered by this seal except:

### LIST CORNERS TO BE INDEXED

CORNER	SECTION	TOWNSHIP	RANGE
NE COR. SW 1/4 NE 1/4	29	90N	11W
SE COR. NW 1/4 NE 1/4	29	90N	11W
SW COR. NE 1/4 NE 1/4	29	90N	11W
NW COR. SE 1/4 NE 1/4	29	90N	11W

Rec!