

Jeffrey P. Helland, 1107 Technology Parkway, Cedar Falls, Iowa 50613-6951, (319)-266-0161

## UNITED STATES PUBLIC LAND SURVEY CORNER CERTIFICATE OF

LAND SURVEY MONUMENTS SITUATED IN SECTION NO. 29, TOWNSHIP NO. 90 NORTH, RANGE  
NO. 11 WEST OF THE FIFTH PRINCIPAL MERIDIAN, BLACK HAWK COUNTY, IOWA.  
PREVIOUSLY RECORDED IN 345 MISC 54.

(SHOW REASON FOR PREPARING THIS CERTIFICATE, THE EVIDENCE AND DETAILED PROCEDURES USED IN ESTABLISHING THE  
CORNER POSITIONS AND MONUMENTATION FOUND OR PLACED.)

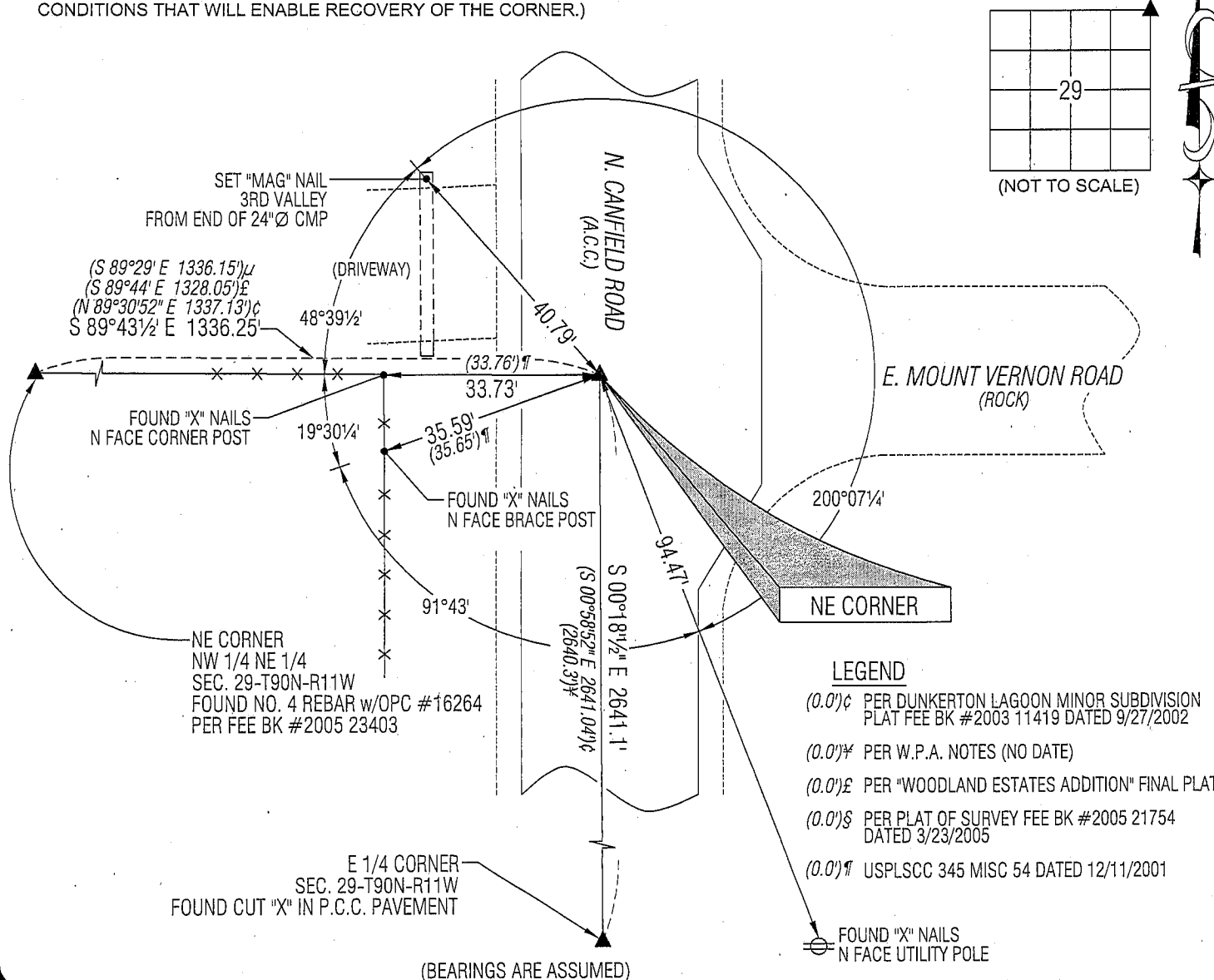
### MONUMENT DESCRIPTION AND REMARKS:

345 MISC 54 MONUMENTATION AND REFERENCE TIES HAVE CHANGED. SURVEY COMPLETED IN THE NE 1/4 OF SEC.  
29-T90N-R11W.

→ **NE CORNER:** W.P.A. NOTES (NO DATE) CALLS FOR [FOUND LIMESTONE 4"x14"x15" IRON PIPE 1 1/2"x32" C/M SET].  
USPLSCC 345 MISC 54 DATED 12/11/2001 CALLS FOR [FOUND 3/4" IRON PIN]. DUNKERTON LAGOON MINOR SUBDIVISION  
PLAT FEE BK #2003 11419 DATED 9/27/2002 CALLS FOR [FD REBAR IN PAVEMENT]. PLAT OF SURVEY DOC. #2007025373  
DATED 5/15/2007 CALLS FOR [FOUND "SURVEY MARKER" NAIL w/IDOT WASHER IN A.C.C. PAVEMENT]. FOUND "SURVEY  
MARKER" NAIL w/IDOT WASHER IN A.C.C. PAVEMENT. CORNER IS 0.8'± WEST OF APPARENT CENTERLINE JOINT AND IN LINE  
WITH FENCE RUNNING WEST.

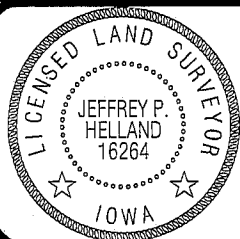
### PLAN VIEW

(SHOW A MINIMUM OF THREE REFERENCE TIES TO DURABLE PHYSICAL OBJECTS, RELEVANT MONUMENTS AND PHYSICAL  
CONDITIONS THAT WILL ENABLE RECOVERY OF THE CORNER.)



HELLAND ENGINEERING & SURVEYING, LTD.  
1107 Technology Parkway  
Cedar Falls, Iowa 50613-6951  
(319)-266-0161

SHINER = 8D NAIL & 1 5/16"Ø METAL SHINER  
BRASS TAG = 13/16"Ø BRASS TAG  
OPC = PLASTIC CAP (O=ORANGE, R=RED, Y=YELLOW)  
(00) RECORDED AS FILE NAME: 08-170C1.DWG



I hereby certify that this land surveying document was prepared  
and the related survey work was performed by me or under my  
direct personal supervision and that I am a duly licensed Land  
Surveyor under the laws of the State of Iowa.

Jeffrey P. Helland 3/5/09  
Jeffrey P. Helland  
License Number 16264  
My license renewal date is December 31, 2009.  
All pages or sheets are covered by this seal except:

### LIST CORNERS TO BE INDEXED

CORNER	SECTION	TOWNSHIP	RANGE
NE CORNER	29	90N	11W
SE CORNER	20	90N	11W
SW CORNER	21	90N	11W
NW CORNER	28	90N	11W

Rec 1