

*Patricia A. Suss*

Jeffrey P. Helland, 1107 Technology Parkway, Cedar Falls, Iowa 50613-6951, (319)-266-0161

# UNITED STATES PUBLIC LAND SURVEY CORNER CERTIFICATE OF

LAND SURVEY MONUMENTS SITUATED IN SECTION NO. 29, TOWNSHIP NO. 90 NORTH, RANGE NO. 11 WEST OF THE FIFTH PRINCIPAL MERIDIAN, BLACK HAWK COUNTY, IOWA.

PREVIOUSLY RECORDED IN \_\_\_\_\_

(SHOW REASON FOR PREPARING THIS CERTIFICATE, THE EVIDENCE AND DETAILED PROCEDURES USED IN ESTABLISHING THE CORNER POSITIONS AND MONUMENTATION FOUND OR PLACED.)

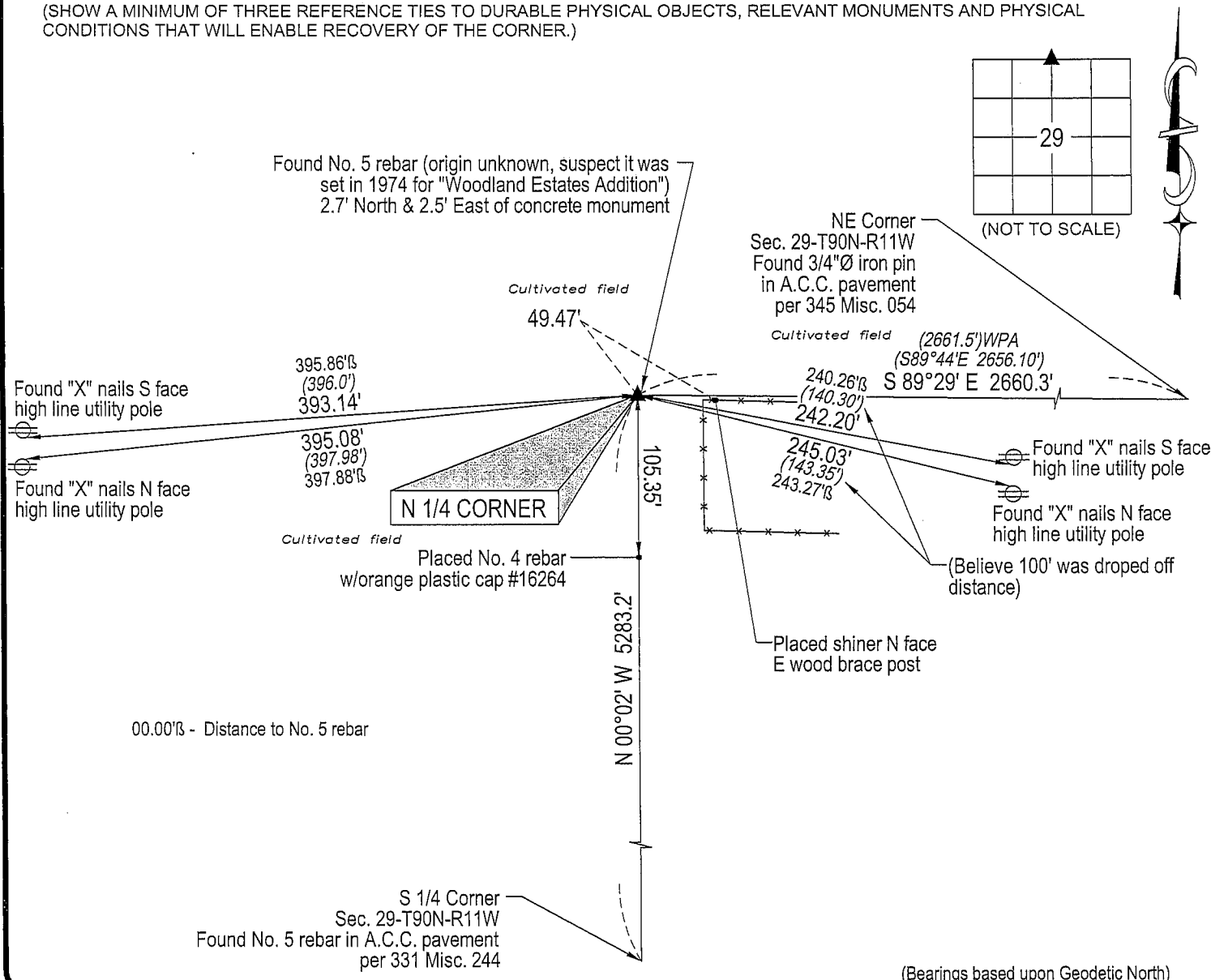
## MONUMENT DESCRIPTION AND REMARKS:

No corner certificate on file. Survey completed in the NW 1/4 NE 1/4 of Sec. 29-T90N-R11W.

→ N 1/4 CORNER: Black Hawk County Engineer reference ties dated 11/29/1939 calls for "Set concrete monument," all ties obliterated. Additional Black Hawk County Engineer reference ties (no date) tie corner into four high line utility poles. Found No. 5 rebar w/pink flagging (origin unknown) 0.9' deep corresponding to said high line utility poles. Believe corner to be suspect because it did not correspond to WPA random line and chaining notes dated 12/19/1941. Started excavation SW of said No. 5 rebar using said WPA random line chaining notes. Found typical broken-off concrete monument 1.8' deep. Set No. 4 rebar on South side for magnetic detection. Set No. 4 rebar w/orange plastic cap #16264 (0.9' long) above center of concrete monument, 0.9' deep.

## PLAN VIEW

(SHOW A MINIMUM OF THREE REFERENCE TIES TO DURABLE PHYSICAL OBJECTS, RELEVANT MONUMENTS AND PHYSICAL CONDITIONS THAT WILL ENABLE RECOVERY OF THE CORNER.)

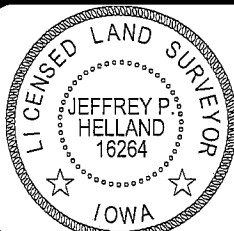


HELLAND ENGINEERING & SURVEYING, LTD.  
1107 Technology Parkway  
Cedar Falls, Iowa 50613-6951  
(319)-266-0161

shiner = 8d nail &amp; 1 15/16" Ø metal shiner

(00') Recorded As

File Name: 05-126c1.dwg



I hereby certify that this land surveying document was prepared and the related survey work was performed by me or under my direct personal supervision and that I am a duly licensed Land Surveyor under the laws of the State of Iowa.  
*Jeffrey P. Helland* 3/23/05  
Jeffrey P. Helland  
License Number 16264  
My license renewal date is December 31, 2005.  
All pages or sheets are covered by this seal except:

LIST CORNERS TO BE INDEXED			
CORNER	SECTION	TOWNSHIP	RANGE
N 1/4 CORNER	29	90N	11W

*Rec.*