

PREPARED BY PATRICK SHEPARD: ^{EW}CIVIL ENGINEERING CONSULTANTS, INC. - 2400 86th ST. #12 -DES MOINES, IOWA 50322

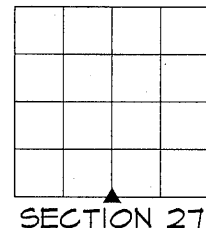
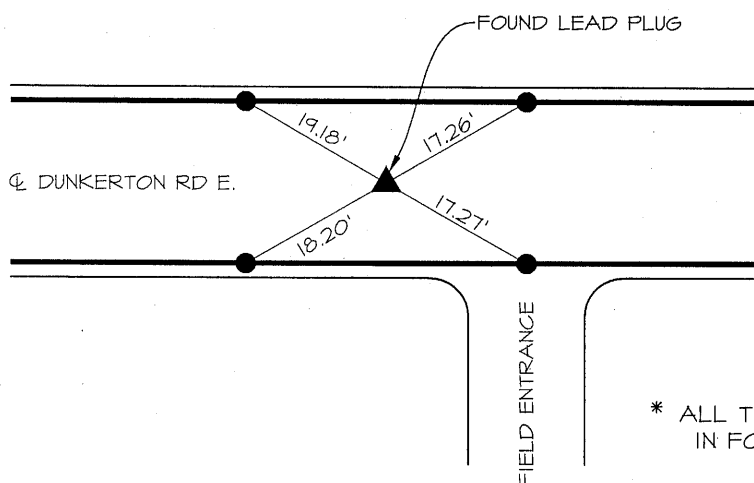
UNITED STATES PUBLIC LAND SURVEY CORNER CERTIFICATE OF

LAND SURVEY MONUMENTS SITUATED IN SECTION 27, TOWNSHIP 90 NORTH, RANGE 11 WEST, OF THE FIFTH PRINCIPAL MERIDIAN, BLACK HAWK COUNTY, IOWA. NO PREVIOUS RECORD FOUND AT THE BLACK HAWK COUNTY RECORDER'S OFFICE.

MONUMENT DESCRIPTION AND REMARKS:

S 1/4 CORNER, 27-90-11. FOUND LEAD PLUG AS NOTED AND ACCEPTED AS S 1/4 CORNER IN A PLAT OF SURVEY RECORDED IN BOOK 277, PAGE 680. THIS CERTIFICATE IS BEING PREPARED TO DOCUMENT MONUMENTATION FOUND AND ACCEPTED AS S 1/4 CORNER AND TO PROVIDE TIES.

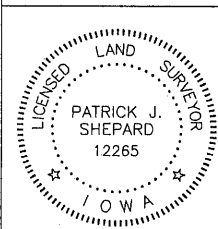
PLAN -VIEW



* ALL TIES ARE CUT "X"
IN FOG LINE

LIST CORNERS TO BE INDEXED

CORNERS	SECTION	TWP.	RANGE
S 1/4 CORNER	27	90	11
N 1/4 CORNER	34	90	11



I HEREBY CERTIFY THAT THIS LAND SURVEYING DOCUMENT WAS PREPARED AND THE RELATED SURVEY WORK WAS PERFORMED BY ME OR UNDER MY DIRECT PERSONAL SUPERVISION AND THAT I AM A DULY LICENSED LAND SURVEYOR UNDER THE LAWS OF THE STATE OF IOWA.

PShepard 1-24-13
PATRICK J. SHEPARD IOWA LICENSE NO. 12265 DATE
MY LICENSE RENEWAL DATE IS DECEMBER 31, 2013
PAGES OR SHEETS COVERED BY THIS SEAL:

THIS SHEET ONLY